



FOR SALE

NW MANDAN DEVELOPMENT LOT

31ST STREET NW (JUST NORTH OF SUNSET DR) | MANDAN, ND



LOT SIZE:
15 ACRES | 653,400 SF

PRICE:
\$7.00 PSF

HIGHLIGHTS:

- Annexed into Mandan in 2013
- Current Zoning: AG | Future Land Use: Commercial
- Off I94 Exit 152 near Future Mandan High School, Mandan Middle School, Starion Sports Complex, Comfort Inn, Baymont Inn, Bennigan's, Arby's, Walmart, BNC Bank, Thrifty White, Kramer Subaru

MATHEW REICHERT

CCIM | Broker | Founder
Partner | Commercial REALTOR®

701.223.2450

matt@aspengrouprealestate.com

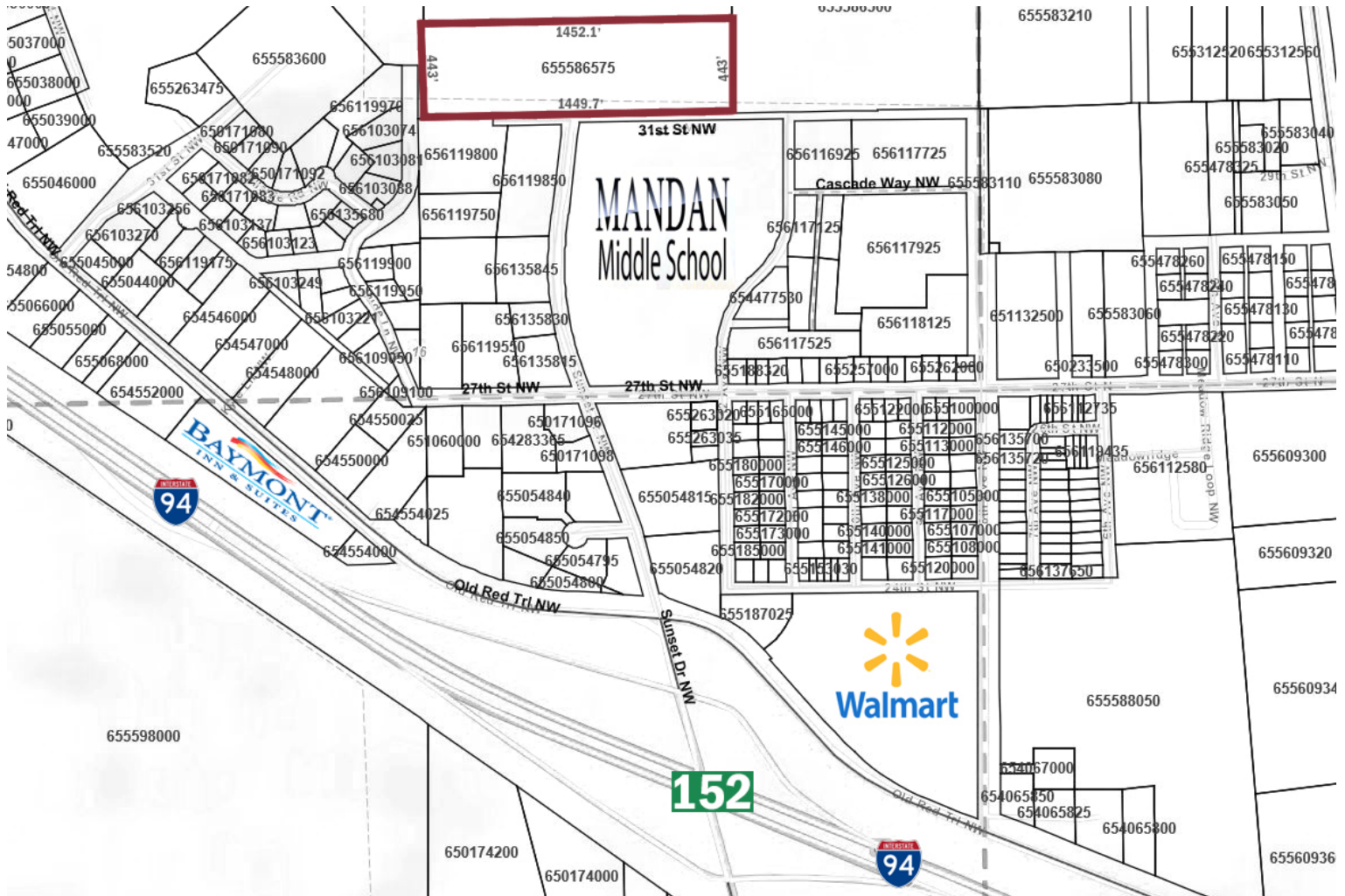
in



424 South 3rd Street, Suite 2
Bismarck, ND 58504
www.aspengrouprealestate.com
f @ in

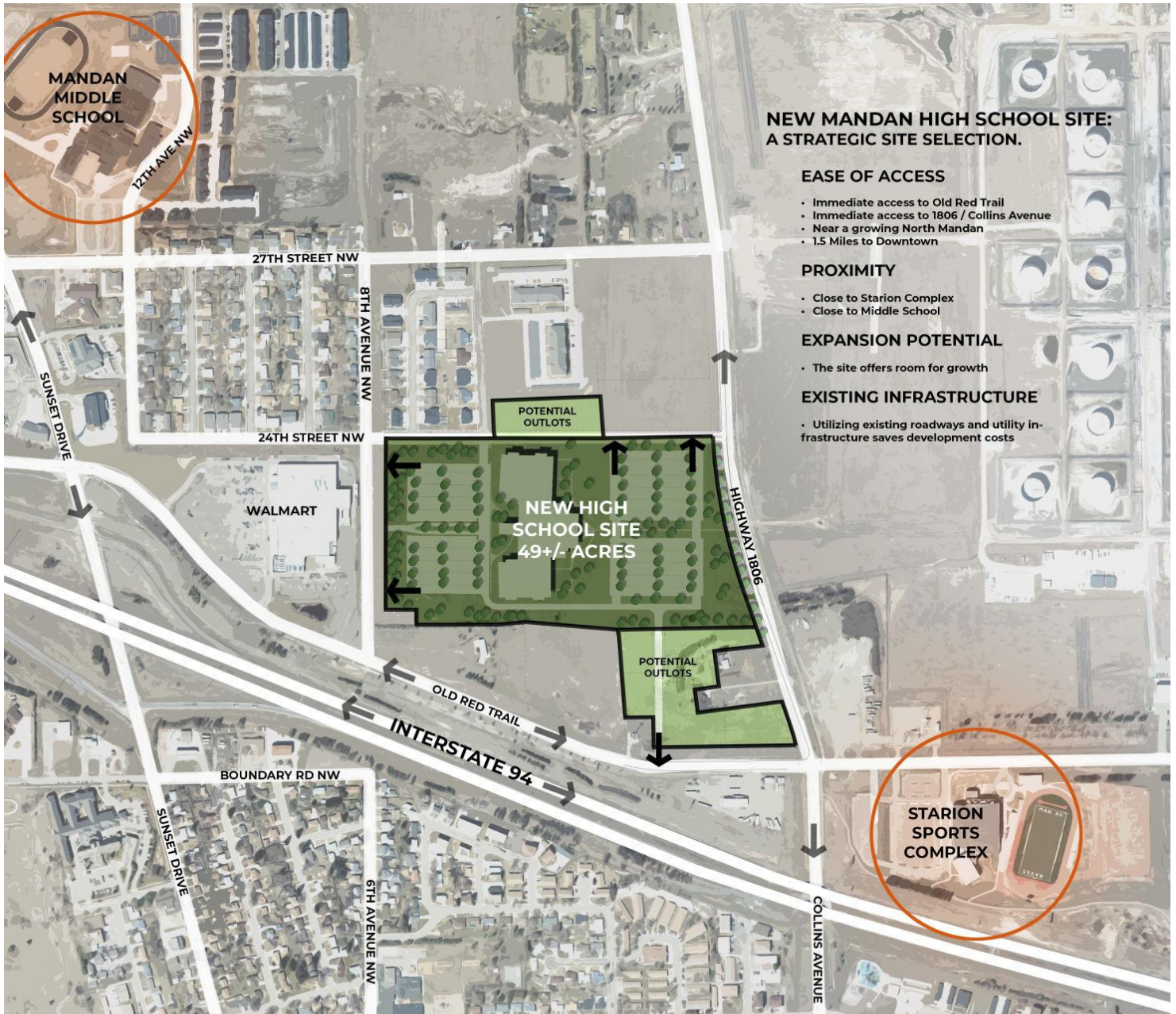
This information has been secured from sources we believe to be reliable, but we make no representation or warranties, expressed or implied, as to the accuracy of the information. All references to age, square footage, income and expenses are approximate. Buyers or lessors should conduct their own independent investigations and rely only on those results.

PROPERTY DETAILS



PID #: 65-5586575
 Legal: South 1/3 of the West 1481.78 of the North 1/2 of the SE 1/4, Section 16, Township 139, Range 81
 Lot Size: 15 Acres
 2021 Taxes: \$3,528.88
 Specials: None at this time.
 Zoning: AG
 Water/Sewer: Near property line

|NEW MANDAN HIGH SCHOOL LOCATION



NEW MANDAN HIGH SCHOOL SITE SELECTION
MANDAN, NORTH DAKOTA

Independent Land Surveying
& Engineering Inc.

|LOCATION MAP

