



## SPACE AVAILABLE:

BUILDING | 3,159 SF

LOT | 16,117 SF

## PRICE:

\$350,000.00 **(Just the Building)**

\$550,000.00 **(Building, Equipment & Assets)**

## HIGHLIGHTS:

- Option to purchase just the building or building, equipment & assets.
- Well known Custom Butcher Shop
- Specializing in Custom Meat Processing, Wild Game Processing, Sausage & Jerky, Curing & Smoking.
- Large variety of retail meat in the coolers ready to purchase
- Assets available upon request



**Steve Ilse**

**Director of Business Brokerage  
Partner | Commercial Realtor®**

**701.223.2450**

**steve@aspengroupprealstate.com**

**424 S 3rd Street, Suite 2 | Bismarck, ND | WWW.ASPENGROUPPREALSTATE.COM**

This information has been secured from sources we believe to be reliable, but we make no representation or warranties, expressed or implied, as to the accuracy of the information. All references to age, square footage, income and expenses are approximate. Buyers or lessors should conduct their own independent investigations and rely on those results.

## PROPERTY DETAILS

**PID#:** 0125-029-010

**Property Address:** 1125 Memorial Highway

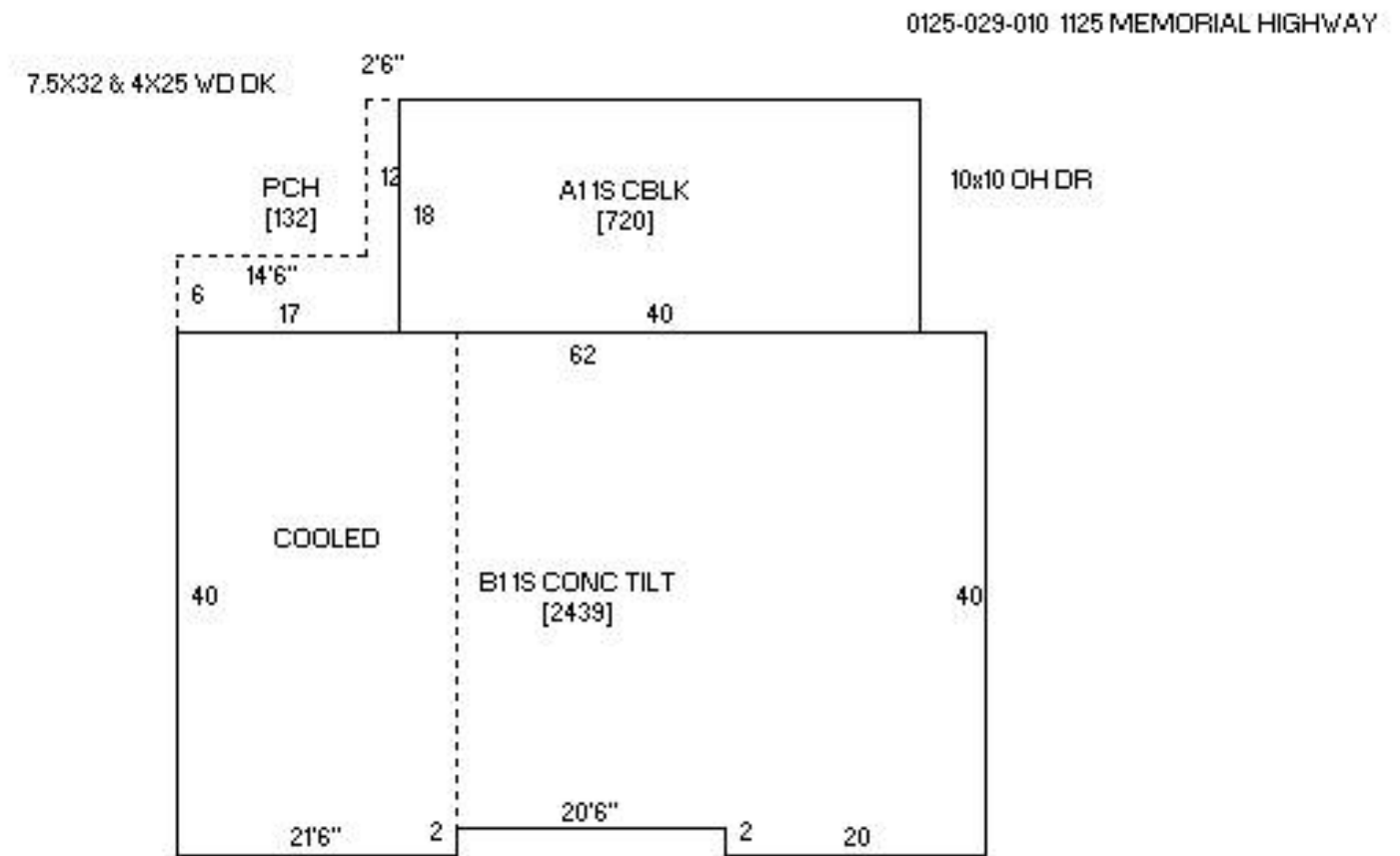
**Legal Description:** PARK HILL (AUD LOTS) Block: 29 BEGINNING @ NWLY CO

**Zoning:** CG - Commercial

**Year Built:** 1970

**2023 Taxes:** \$4,145.53

**Special Assessments:** None at this time



**Steve Ilse**

Director of Business Brokerage  
Partner | Commercial Realtor®

**701.223.2450**

[steve@aspengroupprealstate.com](mailto:steve@aspengroupprealstate.com)



## EXTERIOR PICTURES



**Steve Ilse**

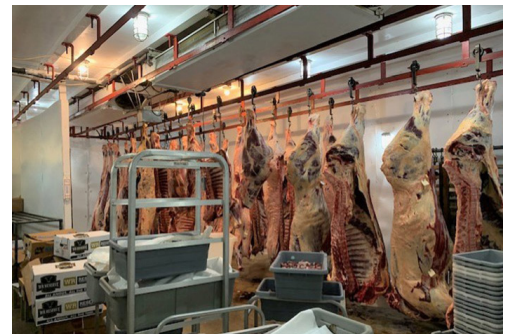
Director of Business Brokerage  
Partner | Commercial Realtor®

**701.223.2450**

[steve@aspengroupprealestate.com](mailto:steve@aspengroupprealestate.com)



## INTERIOR PICTURES



**Steve Ilse**

Director of Business Brokerage  
Partner | Commercial Realtor®

**701.223.2450**

[steve@aspengroupprealestate.com](mailto:steve@aspengroupprealestate.com)



## LOCATION MAP



**Steve Ilse**

Director of Business Brokerage  
Partner | Commercial Realtor®

**701.223.2450**

[steve@aspengrouprealestate.com](mailto:steve@aspengrouprealestate.com)