

LOT SIZE:
624 ACRES

PRICE:
\$2,808,000.00



ASPEN
GROUP LLP
701.223.2450

HIGHLIGHTS:

- Township 160N-Range 83W
- Section 31: E1/2; E1/2W1/2; Lots 1, 2, 3, &4
- 624 taxable acres 612 crop land acres for sale
- Steady source of water disposal income that is 3 cents per barrel and minimum guaranteed of over \$310/month.
- Last years income around \$5,000 but prior years of salt water disposal were higher

424 S 3rd Street, Suite 2 | Bismarck, ND | WWW.ASPENGROUPREALESTATE.COM

This information has been secured from sources we believe to be reliable, but we make no representation or warranties, expressed or implied, as to the accuracy of the information. All references to age, square footage, income and expenses are approximate. Buyers or lessors should conduct their own independent investigations and rely on those results.

PROPERTY INFORMATION:

PARCEL#: 40-0000-13583-000
LEGAL DESCRIPTION: E1/2NW1/4 LOTS 1 & 2 31 160 83
LOT SIZE: 152 ACRES

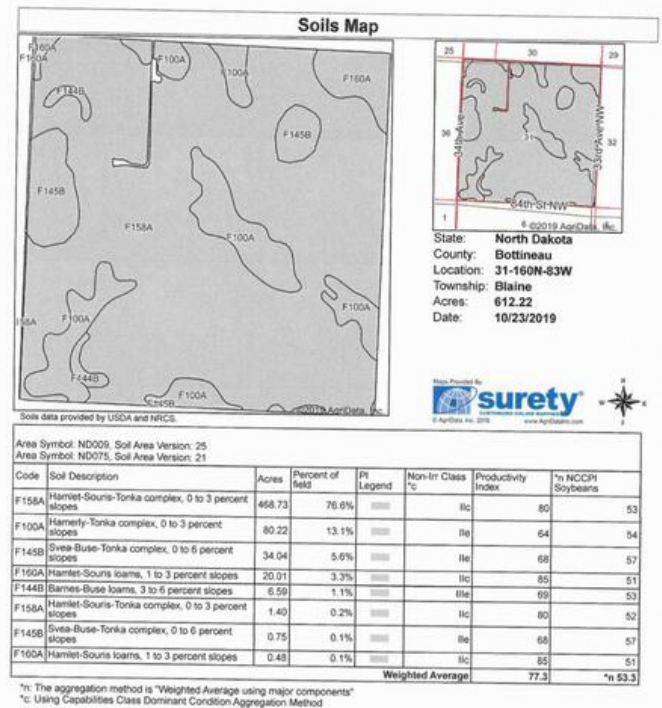
PARCEL#: 40-0000-13586-000
LEGAL DESCRIPTION: NE1/4 31 160 83
LOT SIZE: 160 ACRES

PARCEL#: 40-0000-13585-000
LEGAL DESCRIPTION: E1/2SW1/4 LOTS 3 & 4 31 160 83
LOT SIZE: 152 ACRES

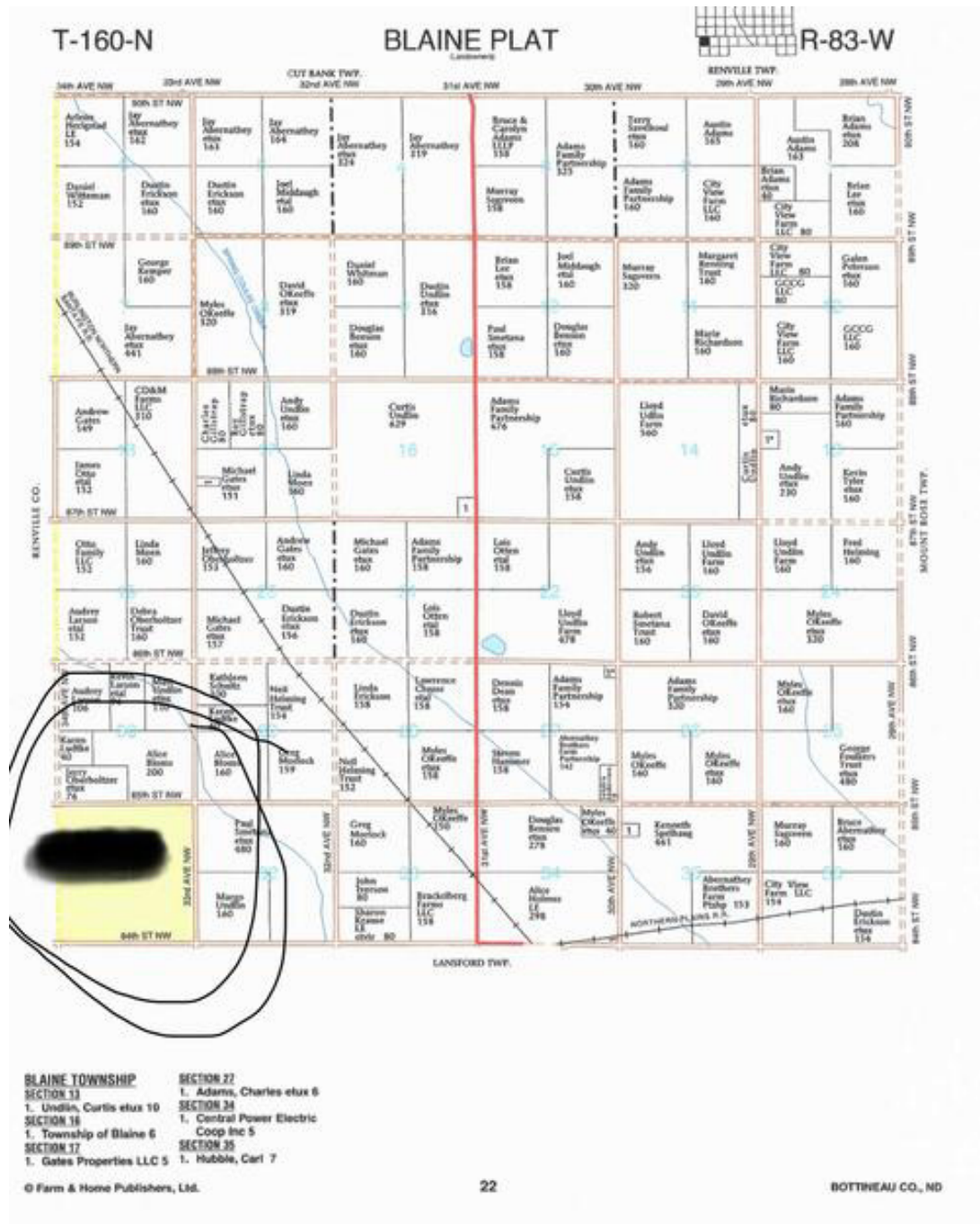
PARCEL#: 40-0000-13584-000
LEGAL DESCRIPTION: SE1/4 31 160 83
LOT SIZE: 160 ACRES



| Name | Number | County | NFIP Participation | Acres | Percent |
|-----------------|----------------|---|--------------------|---------|---------|
| BLAINE TOWNSHIP | 380574 | Bottineau | Regular | 612.22 | 100% |
| Total | | | | 612.22 | 100% |
| Map Change | Date | Case No. | Acres | Percent | |
| No | | | 612.22 | 100% | |
| Zone | SubType | Description | Acres | Percent | |
| D | | Areas with possible but undetermined flood hazards. | 612.22 | 100% | |
| Total | | | 612.22 | 100% | |
| Panel | Effective Date | Acres | Percent | | |
| 38009C0575C | 9/2/2009 | 612.22 | 100% | | |
| Total | | 612.22 | 100% | | |



PLAT MAP





This information has been secured from sources we believe to be reliable, but we make no representation or warranties, expressed or implied, as to the accuracy of the information. All references to age, square footage, income and expenses are approximate. Buyers or lessors should conduct their own independent investigations and rely on those results.