

## LOT SIZE:

**16.62 ACRES | 725,980 SF**

**LOT 1:** 1.85 Acres | 80,383 SF

**LOT 2:** 6.14 Acres | 267,483 SF

**LOT 3:** 8.63 Acres | 378,114 SF

## PRICE:

**\$2.50 PSF | \$1,814,950.00**

## HIGHLIGHTS:

- 8 miles West of Mandan
- Interstate 94 frontage
- Zoning: Commercial/Industrial
- Rural Water



**Jessica Knutson**

CCIM | Partner  
Commercial Realtor®

**701.223.2450**

[jessica@aspengroupprealestate.com](mailto:jessica@aspengroupprealestate.com)

**424 S 3rd Street, Suite 2 | Bismarck, ND | [WWW.ASPENGROUPPREALSTATE.COM](http://WWW.ASPENGROUPPREALSTATE.COM)**

This information has been secured from sources we believe to be reliable, but we make no representation or warranties, expressed or implied, as to the accuracy of the information. All references to age, square footage, income and expenses are approximate. Buyers or lessors should conduct their own independent investigations and rely on those results.

## PROPERTY DETAILS

### LOT 1 - ADDRESS TBD

Parcel ID: 43-0085000

Legal Description: Lot 1, Block 1, AJSM Subdivision 15-139-83

Lot Size: 80,383 SF, (1.85 Acres)

Zoning: CG - Commercial

2023 Taxes: \$66.45

Special Assessments: None at this time

### LOT 2 - ADDRESS TBD

Parcel ID: 43-0085010

Legal Description: Lot 2, Block 1, AJSM Subdivision 15-139-83

Lot Size: 267,483 SF, (6.14 Acres)

Zoning: CG - Commercial

2023 Taxes: \$113.92

Special Assessments: None at this time

### LOT 3 - ADDRESS TBD

Parcel ID: 43-0085020

Legal Description: Lot 3, Block 1, AJSM Subdivision 15-139-83

Lot Size: 378,114 SF, (8.63 Acres)

Zoning: Industrial

2023 Taxes: \$113.92

Special Assessments: None at this time



**Jessica Knutson**

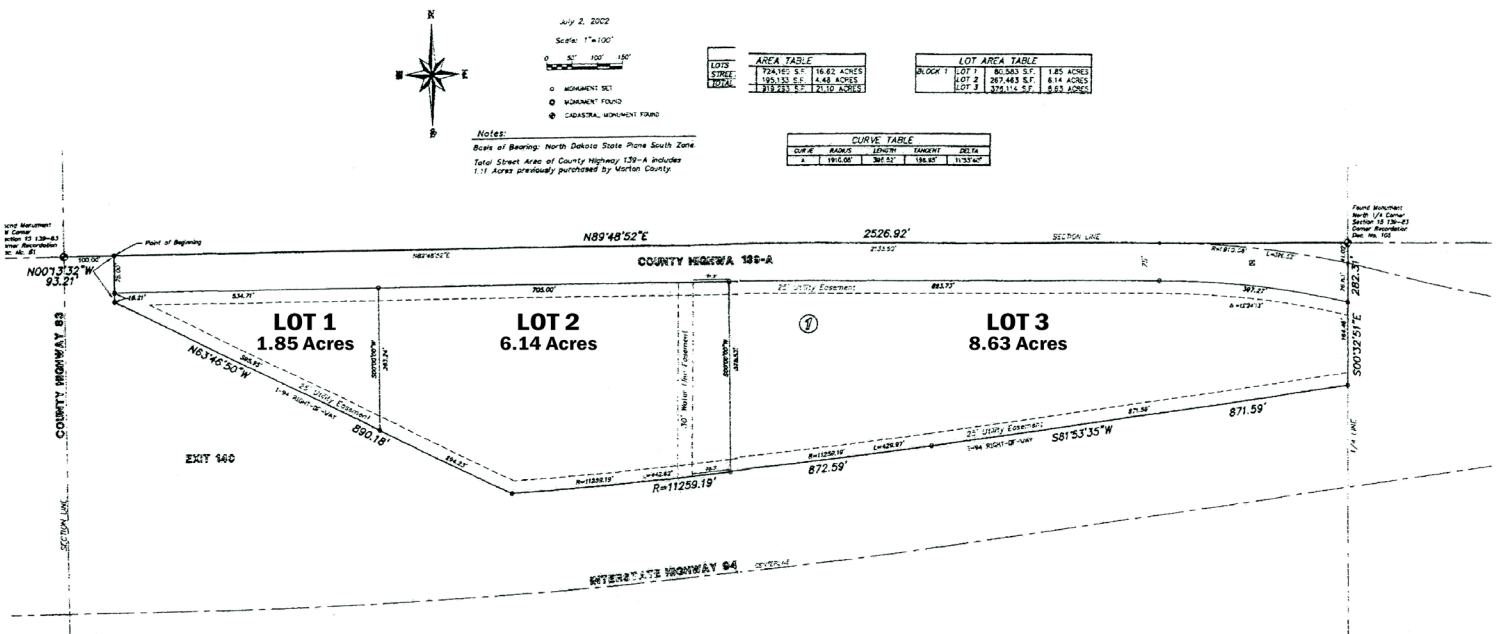
CCIM | Partner  
Commercial Realtor®

**701.223.2450**

[jessica@aspengrouprealestate.com](mailto:jessica@aspengrouprealestate.com)

# PLAT MAP

*ASPM SUBDIVISION*  
PART OF THE NW1/4 SECTION 15, T. 139 N., R. 83 W.  
MORTON COUNTY, NORTH DAKOTA



**Jessica Knutson**

CCIM | Partner  
Commercial Realtor®

**701.223.2450**

[jessica@aspengroupprealestate.com](mailto:jessica@aspengroupprealestate.com)