



## THE OFFERING:

Keller Williams Inspire Realty and Aspen Group LLP are pleased to offer for sale of Lot 5 in Highlander Estates in Minot, ND. This is an excellent opportunity to get started on commercial development. This lot sits adjacent to the new Trinity Hospital that was completed in 2023. With new healthcare facilities, a four-year college, Air Force Base, an unemployment rate of 2.0%, a 623,000 square foot mall, and almost 50,000 residents, Minot is the largest and most stabilized economy in the Bakken. Minot is also the fourth largest city in the state of North Dakota.

## SPACE AVAILABLE:

LOT 5 - 270,225.20 SF (2.5 acres unusable)

## PRICE:

\$1,450,000.00

## HIGHLIGHTS:

- Located in South West Minot
- In close proximity to new Trinity Health Hospital, CashWise Foods, Petco, Five Guys, Sonic, & more!



### Mike Ilse

Broker Associate | Partner  
Commercial REALTOR®

**701.223.2450**

[mike@aspengroupprealestate.com](mailto:mike@aspengroupprealestate.com)



### Lynne Reisenauer

REALTOR®  
kw INSPIRE REALTY

**701.818-0981**

[lreisenauer@kw.com](mailto:lreisenauer@kw.com)

**424 S 3rd Street, Suite 2 | Bismarck, ND | [WWW.ASPENGROUPPREALESTATE.COM](http://WWW.ASPENGROUPPREALESTATE.COM)**  
**12 S Main Street | Minot, ND | [LYNNEREISENAUER.KW.COM](http://LYNNEREISENAUER.KW.COM)**

This information has been secured from sources we believe to be reliable, but we make no representation or warranties, expressed or implied, as to the accuracy of the information. All references to age, square footage, income and expenses are approximate. Buyers or lessors should conduct their own independent investigations and rely on those results.



**PARCEL #:** MI34.C89.000.0100  
**LEGAL DESCRIPTION:** HIGHLANDER ESTATES S/D LOT 10  
**ZONING:** C1 - LIMITED COMMERCIAL  
**2022 TAXES:** \$18,043.13  
**SPECIAL ASSESSMENTS:** NONE AT THIS TIME



This information has been secured from sources we believe to be reliable, but we make no representation or warranties, expressed or implied, as to the accuracy of the information. All references to age, square footage, income and expenses are approximate. Buyers or lessors should conduct their own independent investigations and rely on those results.



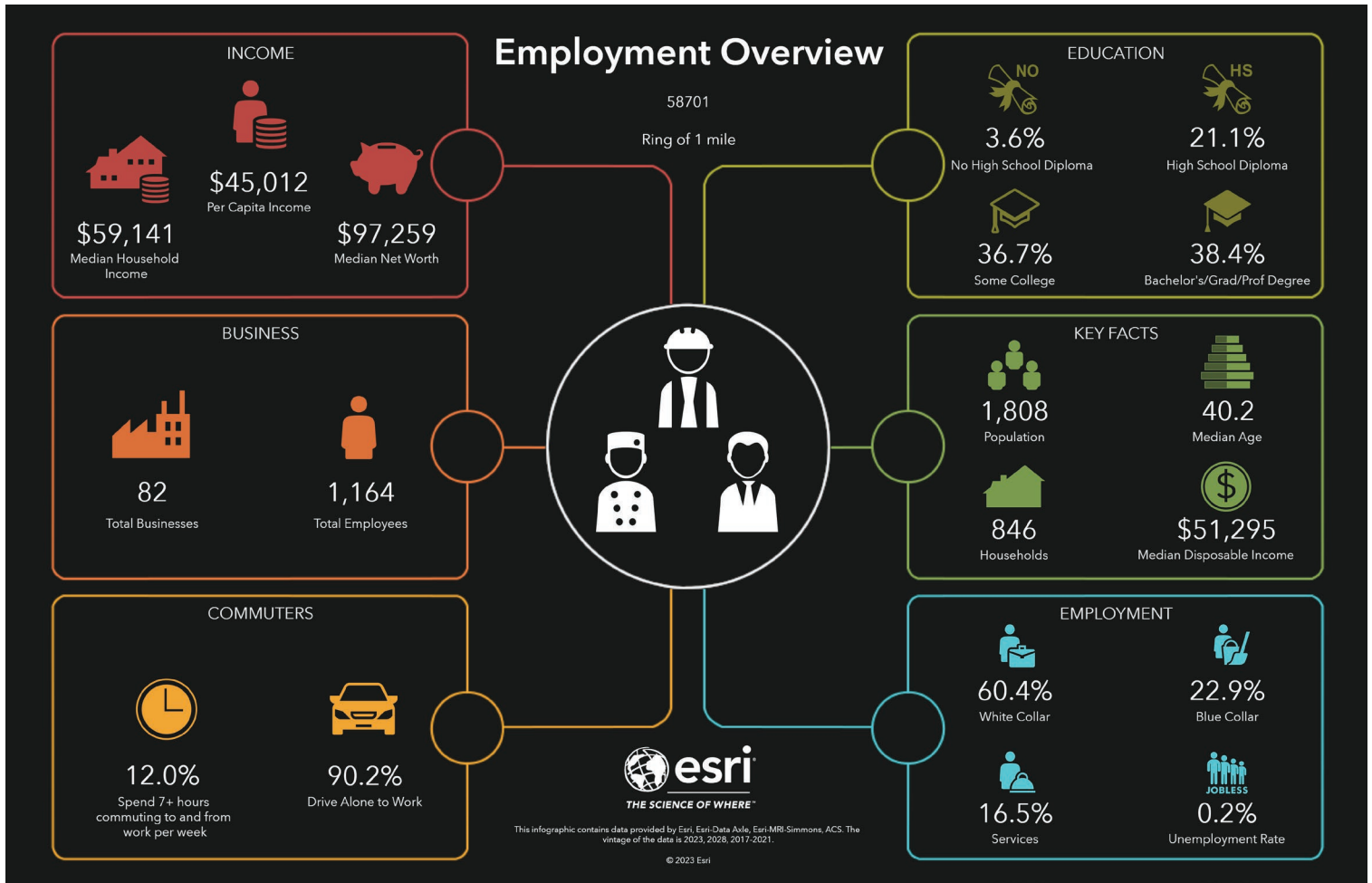
## ARIEL PHOTOS



**424 S 3rd Street, Suite 2 | Bismarck, ND | [WWW.ASPENGROUPREALESTATE.COM](http://WWW.ASPENGROUPREALESTATE.COM)**  
**12 S Main Street | Minot, ND | [LYNNEREISENAUER.KW.COM](http://LYNNEREISENAUER.KW.COM)**

This information has been secured from sources we believe to be reliable, but we make no representation or warranties, expressed or implied, as to the accuracy of the information. All references to age, square footage, income and expenses are approximate. Buyers or lessors should conduct their own independent investigations and rely on those results.

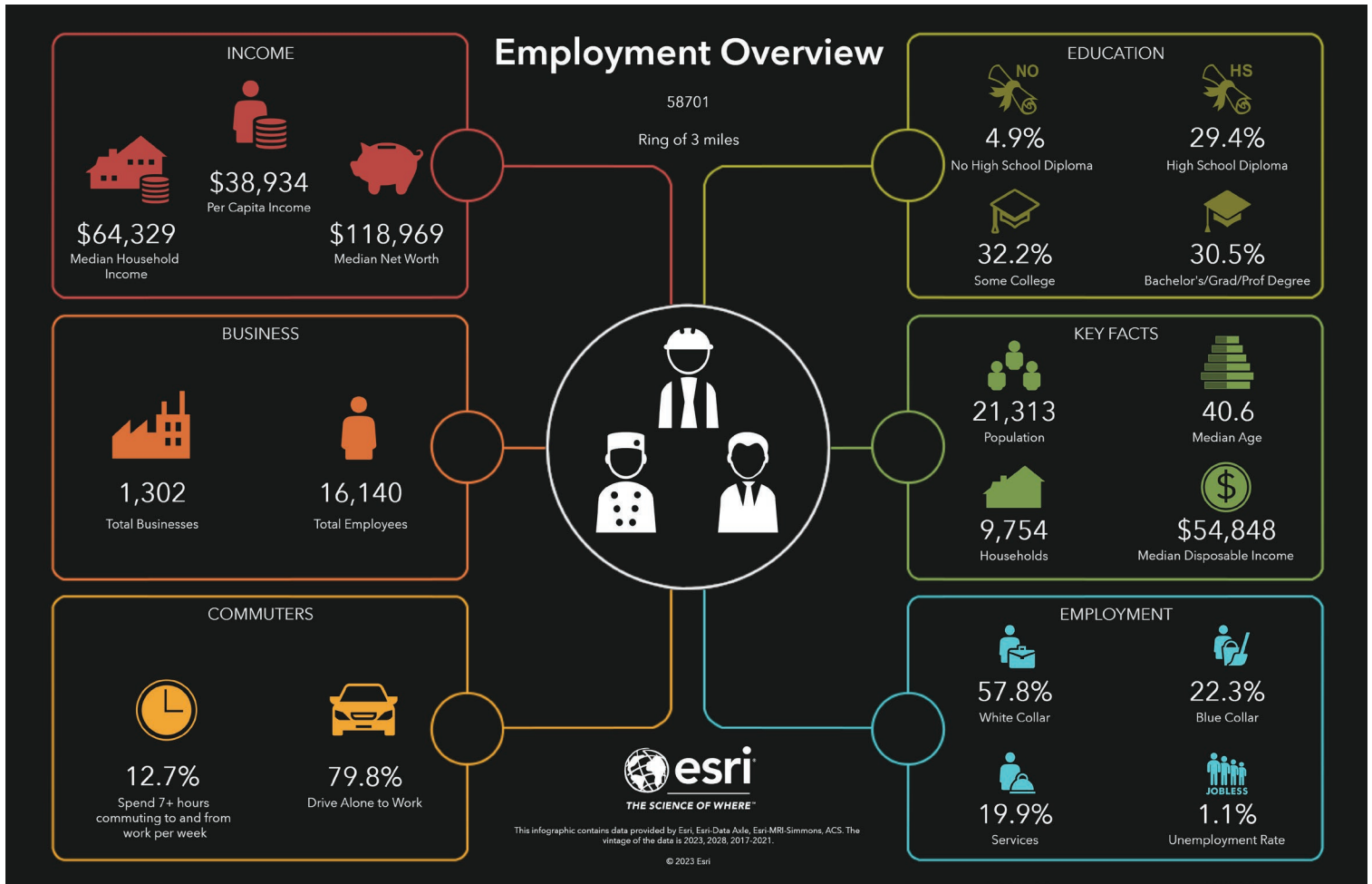
## DEMOGRAPHICS - 1 MILE



**424 S 3rd Street, Suite 2 | Bismarck, ND | [WWW.ASPENGROUPREALESTATE.COM](http://WWW.ASPENGROUPREALESTATE.COM)**  
**12 S Main Street | Minot, ND | [LYNNEREISENAUER.KW.COM](http://LYNNEREISENAUER.KW.COM)**

This information has been secured from sources we believe to be reliable, but we make no representation or warranties, expressed or implied, as to the accuracy of the information. All references to age, square footage, income and expenses are approximate. Buyers or lessors should conduct their own independent investigations and rely on those results.

## DEMOGRAPHICS - 3 MILES

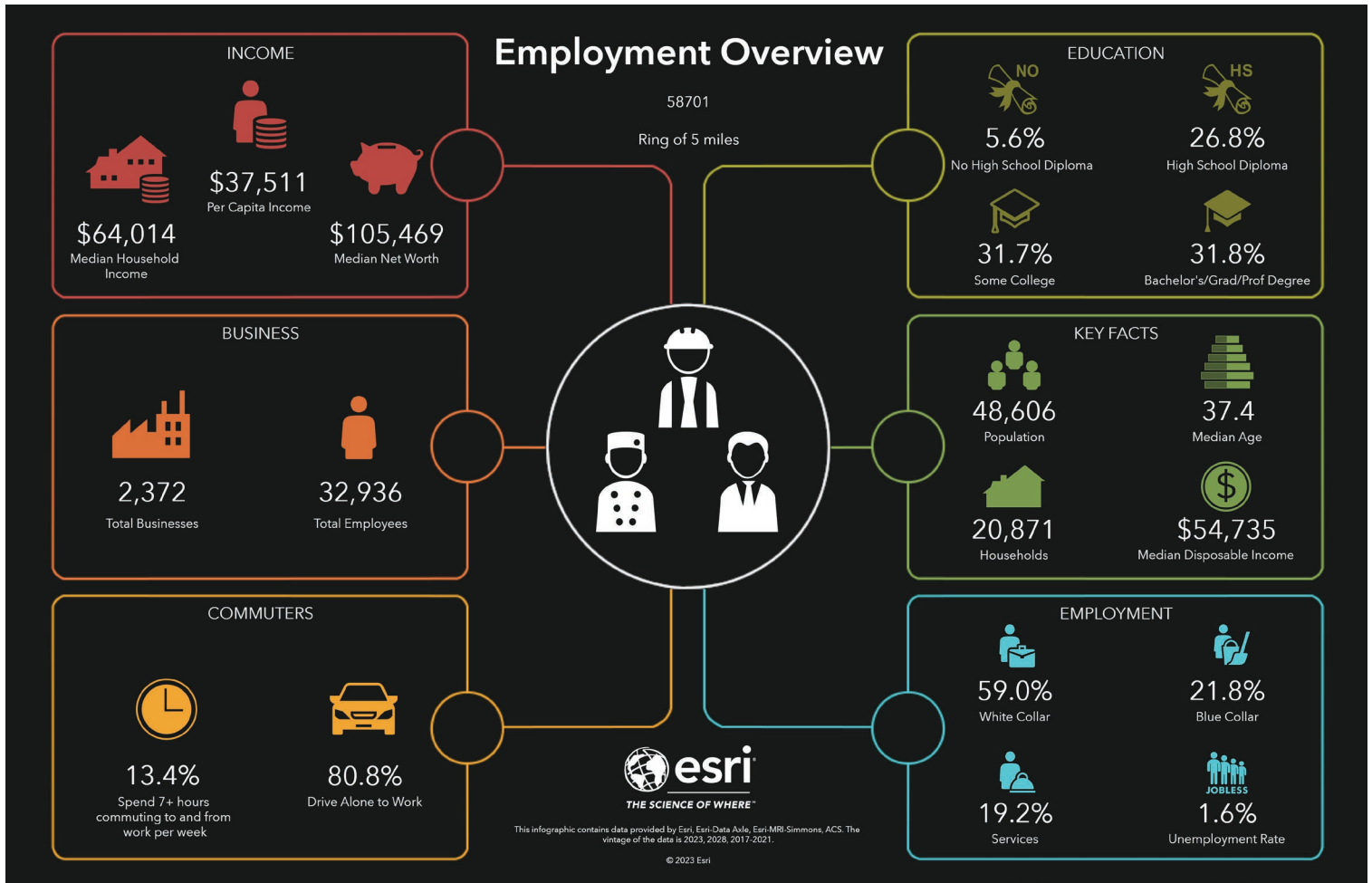


**424 S 3rd Street, Suite 2 | Bismarck, ND | [WWW.ASPENGROUPREALESTATE.COM](http://WWW.ASPENGROUPREALESTATE.COM)**  
**12 S Main Street | Minot, ND | [LYNNEREISENAUER.KW.COM](http://LYNNEREISENAUER.KW.COM)**

This information has been secured from sources we believe to be reliable, but we make no representation or warranties, expressed or implied, as to the accuracy of the information. All references to age, square footage, income and expenses are approximate. Buyers or lessors should conduct their own independent investigations and rely on those results.



## DEMOGRAPHICS - 5 MILES



**424 S 3rd Street, Suite 2 | Bismarck, ND | [WWW.ASPENGROUPREALESTATE.COM](http://WWW.ASPENGROUPREALESTATE.COM)**  
**12 S Main Street | Minot, ND | [LYNNEREISENAUER.KW.COM](http://LYNNEREISENAUER.KW.COM)**

This information has been secured from sources we believe to be reliable, but we make no representation or warranties, expressed or implied, as to the accuracy of the information. All references to age, square footage, income and expenses are approximate. Buyers or lessors should conduct their own independent investigations and rely on those results.

## TRAFFIC COUNTS



**424 S 3rd Street, Suite 2 | Bismarck, ND | [WWW.ASPENGROUPREALESTATE.COM](http://WWW.ASPENGROUPREALESTATE.COM)**  
**12 S Main Street | Minot, ND | [LYNNEREISENAUER.KW.COM](http://LYNNEREISENAUER.KW.COM)**

This information has been secured from sources we believe to be reliable, but we make no representation or warranties, expressed or implied, as to the accuracy of the information. All references to age, square footage, income and expenses are approximate. Buyers or lessors should conduct their own independent investigations and rely on those results.

## LOCATION MAP



**424 S 3rd Street, Suite 2 | Bismarck, ND | [WWW.ASPENGROUPREALESTATE.COM](http://WWW.ASPENGROUPREALESTATE.COM)**  
**12 S Main Street | Minot, ND | [LYNNEREISENAUER.KW.COM](http://LYNNEREISENAUER.KW.COM)**

This information has been secured from sources we believe to be reliable, but we make no representation or warranties, expressed or implied, as to the accuracy of the information. All references to age, square footage, income and expenses are approximate. Buyers or lessors should conduct their own independent investigations and rely on those results.