



# FOR SALE

## DICKINSON, ND INDUSTRIAL ACREAGE

ENERGY DRIVE & VILLARD STREET EAST | DICKINSON, ND



**LOT SIZE:**  
44.6 ACRES | 1,942,776 SF

**PRICE:**  
\$1.25 PSF

**HIGHLIGHTS:**

- Located within the municipal boundary of Dickinson just South of Interstate 94 (Exit 64)
- Zoning: GI—General Industrial
- No Load Restrictions on Energy Drive
- Water & Sewer to the property

This information has been secured from sources we believe to be reliable, but we make no representation or warranties, expressed or implied, as to the accuracy of the information. All references to age, square footage, income and expenses are approximate. Buyers or lessors should conduct their own independent investigations and rely only on those results.

JESSICA KNUTSON  
CCIM | Partner | Commercial REALTOR®

701.223.2450

in



424 South 3rd Street, Suite 2  
Bismarck, ND 58504  
701.223.2450

f @ in

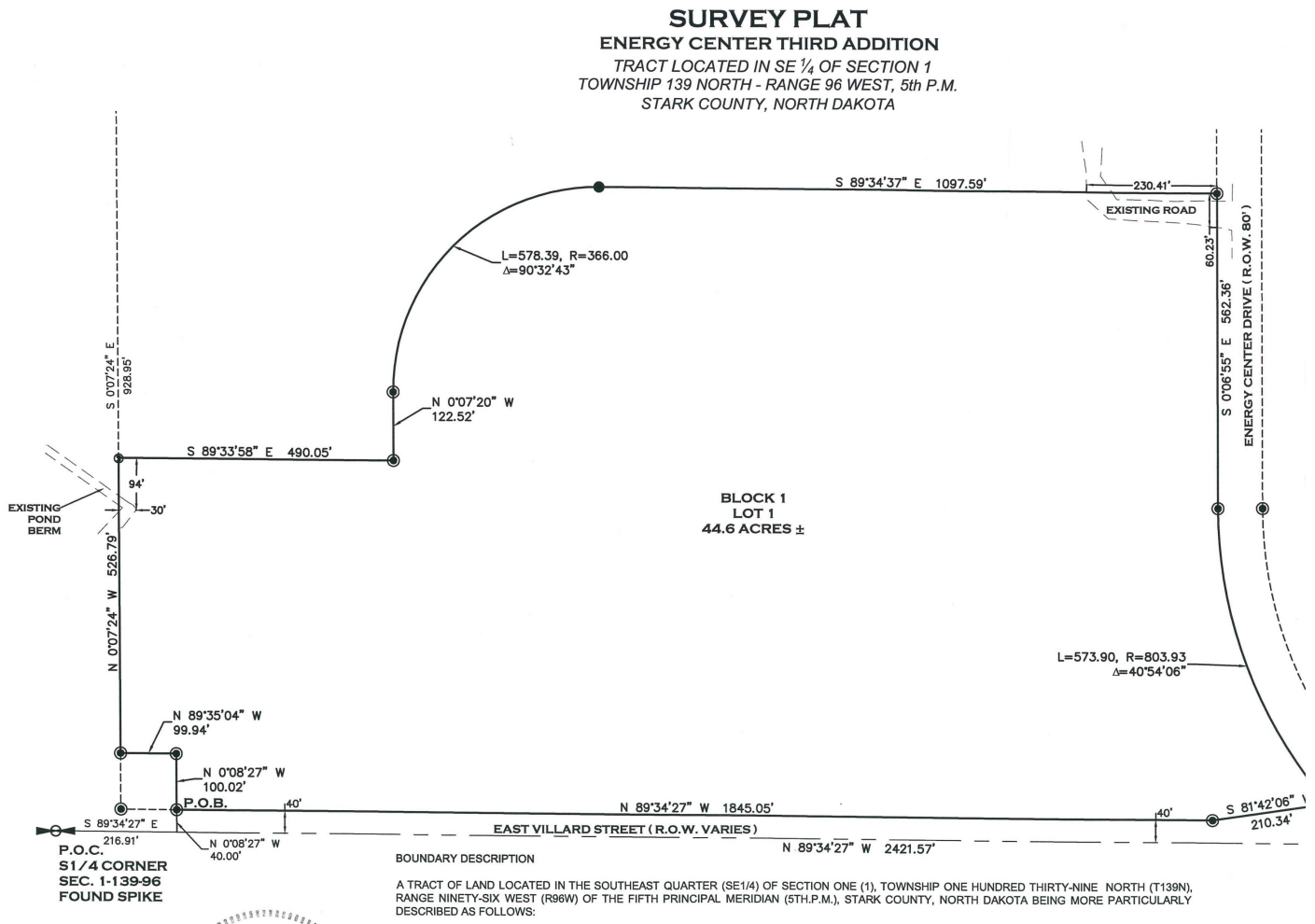


# FOR SALE

## ENERGY DRIVE & VILLARD STREET EAST | DICKINSON, ND

### PROPERTY DETAILS

PID: 41-1575-01000-100  
Legal: South portion Lot 1, Block 1, Energy Center 3rd  
Lot Size: 44.6 Acres (1,942,776 SF)  
2021 Taxes: \$11,152.74  
Specials: None at this time  
Zoned: GI—General Industrial  
Water: NE corner of parcel and 1/4 mile west of SW corner



JESSICA KNUTSON

CCIM | Partner | Commercial REALTOR®

701.223.2450



WWW.ASPENGROUPREALESTATE.COM





# FOR SALE

ENERGY DRIVE & VILLARD STREET EAST | DICKINSON, ND



JESSICA KNUTSON

CCIM | Partner | Commercial REALTOR®

701.223.2450



WWW.ASPENGROUPREALESTATE.COM





# FOR SALE

ENERGY DRIVE & VILLARD STREET EAST | DICKINSON, ND

---



---

**JESSICA KNUTSON**

CCIM | Partner | Commercial REALTOR®

**701.223.2450**



[WWW.ASPENGROUPREALESTATE.COM](http://WWW.ASPENGROUPREALESTATE.COM)