



FOR SALE

WILLISTON DEVELOPMENT LOT

3715 2ND AVENUE WEST | WILLISTON, ND



LOT SIZE:

1.66 ACRES | 72,412 SF

PRICE:

\$1,700,000.00

HIGHLIGHTS:

- Zoning: C2—General Commercial
- Excellent Visibility
- High Traffic Counts
- Located along Highway 2 near Walmart, Microtel Inn & Suites, Candlewood Suites, Holiday Inn Express, Hawthorn by Wyndham and Best Western Plus

MATHEW REICHERT

CCIM | Broker | Commercial REALTOR®

701.223.2450

matt@aspengroupprealstate.com

MICHAEL ILSE

Broker Associate | Partner | Commercial REALTOR®

701.223.2450

mike@aspengroupprealstate.com



424 South 3rd Street, Suite 2
Bismarck, ND 58504

www.aspengroupprealstate.com



This information has been secured from sources we believe to be reliable, but we make no representation or warranties, expressed or implied, as to the accuracy of the information. All references to age, square footage, income and expenses are approximate. Buyers or lessors should conduct their own independent investigations and rely only on those results.

PROPERTY DETAILS

PID#: 01-038-00-00-01-020
Legal: Lot 2, Block 1, Boston Pizza Subdivision
Lot Size: 1.66 Acres (72,412 SF)
2021 Taxes: \$2,769.66
Specials: \$551.56 Installment



MATHEW REICHERT

CCIM | Broker | Commercial REALTOR®

701.223.2450

MATT@ASPENGROUPREALESTATE.COM

MICHAEL ILSE

Partner | Commercial REALTOR®

701.223.2450

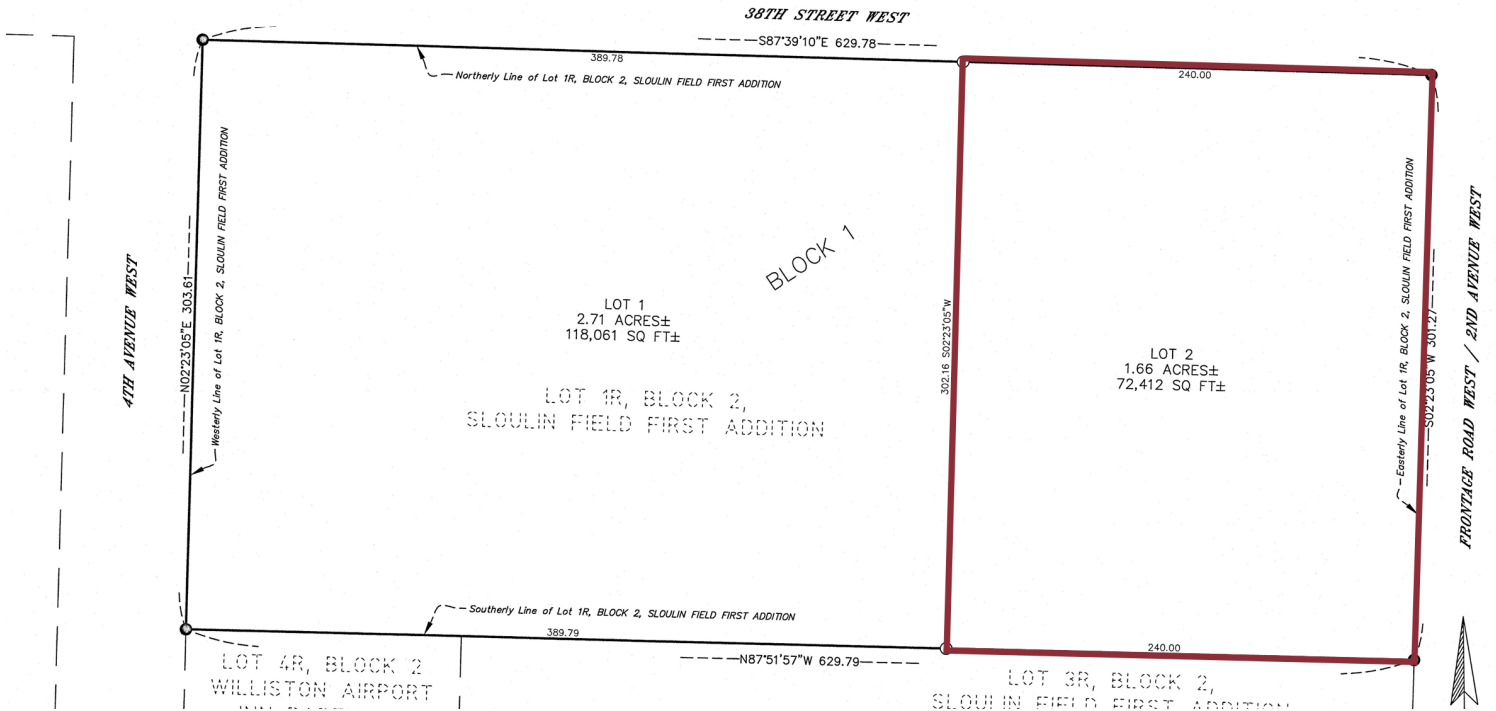
MIKE@ASPENGROUPREALESTATE.COM

WWW.ASPENGROUPREALESTATE.COM

PLAT MAP

BOSTON PIZZA SUBDIVISION

A REPLAT OF LOT 1R, BLOCK 2, A REARRANGEMENT OF LOTS 1 & 2,
BLOCK 2, SLOULIN FIELD FIRST ADDITION SITUATED IN SECTION 11,
TOWNSHIP 154 NORTH, RANGE 101 WEST, CITY OF WILLISTON
COUNTY OF WILLIAMS, STATE OF NORTH DAKOTA



|LOCATION MAP

