

**LOT SIZE:**

60 ACRES +/-

**PRICE:**

\$800,000.00

**HIGHLIGHTS:**

- Access to water & sewer on north side of property
- Easy Access to Hwy 49



**Mike Ilse**

Broker | Partner  
Commercial Realtor®

**701.223.2450**

[mike@aspengrouprealestate.com](mailto:mike@aspengrouprealestate.com)



**Liz Spaeth**

Commercial Realtor®

**701.223.2450**

[liz@aspengrouprealestate.com](mailto:liz@aspengrouprealestate.com)

**424 S 3rd Street, Suite 2 | Bismarck, ND | [WWW.ASPENGROUPREALSTATE.COM](http://WWW.ASPENGROUPREALSTATE.COM)**

This information has been secured from sources we believe to be reliable, but we make no representation or warranties, expressed or implied, as to the accuracy of the information. All references to age, square footage, income and expenses are approximate. Buyers or lessors should conduct their own independent investigations and rely on those results.

## PROPERTY DETAILS

**PID: BB-144-88-90-27-01 (Unplatted)**

LEGAL DESCRIPTION: TRACT W OF CENTURY 2ND ADDN

LOT SIZE: 7.510 AC

2023 TAXES: \$154.13

SPECIAL ASSESSMENTS: None at this time

**PID#: 27-144-88-00-24-203**

LEGAL DESCRIPTION: TRACT IN NE4

LOT SIZE: 12.11 AC

2023 TAXES: \$24.17

SPECIAL ASSESSMENTS: None at this time

**871 CITY ROAD 19**

PID#: 27-144-88-00-24-801

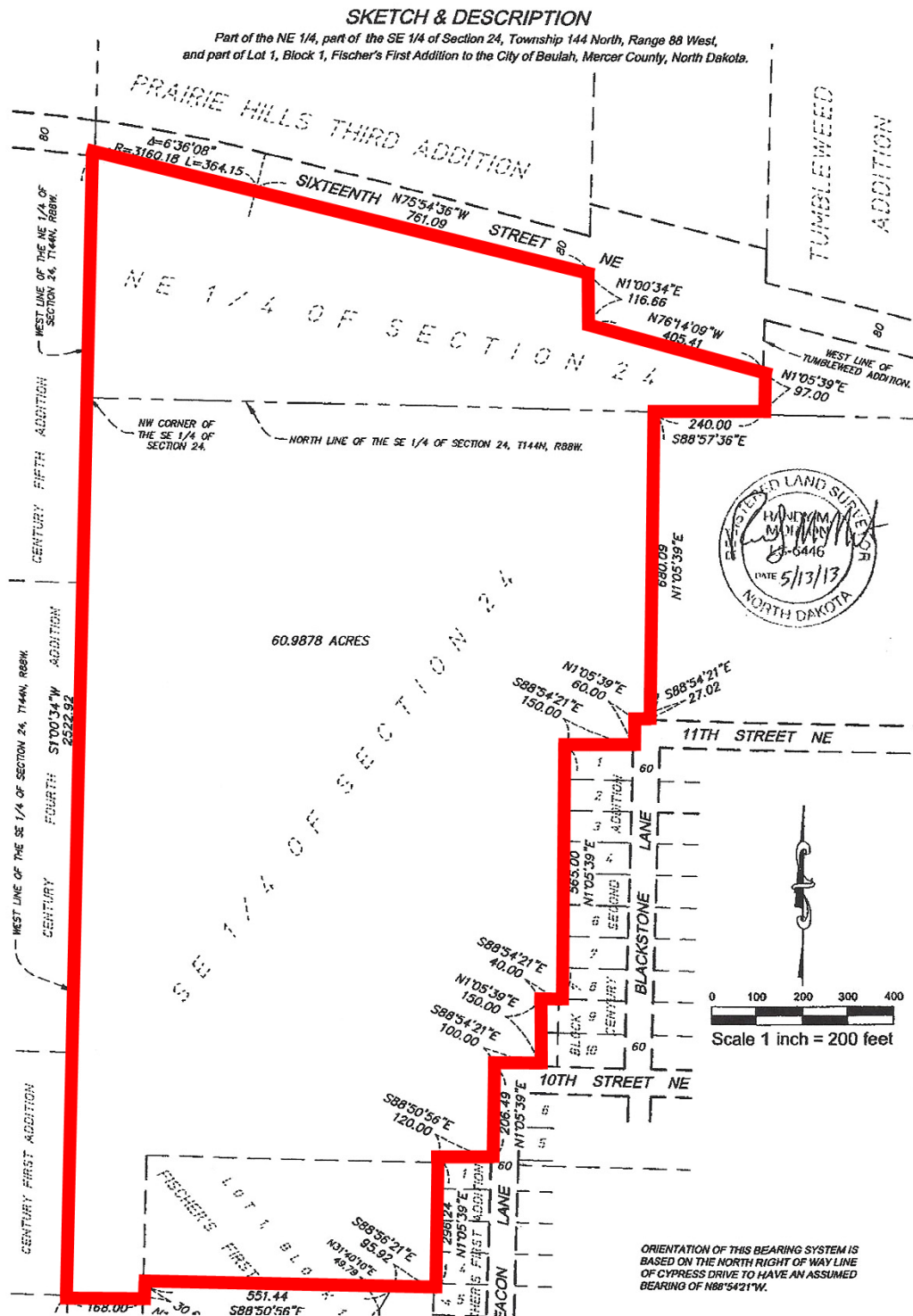
LEGAL DESCRIPTION: FRAC SE4

LOT SIZE: 42.4 AC

2023 TAXES: \$184.24

SPECIAL ASSESSMENTS: None at this time

# PLAT MAP



**424 S 3rd Street, Suite 2 | Bismarck, ND | [WWW.ASPENGROUPREALESTATE.COM](http://WWW.ASPENGROUPREALESTATE.COM)**

This information has been secured from sources we believe to be reliable, but we make no representation or warranties, expressed or implied, as to the accuracy of the information. All references to age, square footage, income and expenses are approximate. Buyers or lessors should conduct their own independent investigations and rely on those results.



## LOCATION MAP



**424 S 3rd Street, Suite 2 | Bismarck, ND | [WWW.ASPENGROUPREALESTATE.COM](http://WWW.ASPENGROUPREALESTATE.COM)**

This information has been secured from sources we believe to be reliable, but we make no representation or warranties, expressed or implied, as to the accuracy of the information. All references to age, square footage, income and expenses are approximate. Buyers or lessors should conduct their own independent investigations and rely on those results.