



# FOR SALE

## BEULAH DEVELOPMENT LAND

ADDRESS TBD | BEULAH, ND



**LOT SIZE:**  
60 ACRES +/-

**PRICE:**  
\$800,000.00

**HIGHLIGHTS:**

- Access to Water & Sewer on north side of property
- Easy Access to Hwy 49

**MICHAEL ILSE**

Broker Associate | Partner | Commercial REALTOR®

701.223.2450

mike@aspengrouprealestate.com

**in**



424 South 3rd Street, Suite 2  
Bismarck, ND 58504  
www.aspengrouprealestate.com

**f @ in**

*This information has been secured from sources we believe to be reliable, but we make no representation or warranties, expressed or implied, as to the accuracy of the information. All references to age, square footage, income and expenses are approximate. Buyers or lessors should conduct their own independent investigations and rely only on those results.*



**FOR SALE**  
ADDRESS TBD | BEULAH, ND

---

## |PROPERTY DETAILS

PID: BB-144-88-90-27-01 (Unplatted)  
LEGAL: TRACT W OF CENTURY 2ND ADDN  
LOT SIZE: 7.510 AC  
2020 TAXES: \$141.15

PID: 27-144-88-00-24-203  
LEGAL: TRACT IN NE4  
LOT SIZE: 12.11 AC

871 CITY ROAD 19

PID: 27-144-88-00-24-801  
LEGAL: FRAC SE4  
LOT SIZE: 42.4 AC  
2020 TAXES: \$985.00

---

**MICHAEL ILSE**

Broker Associate | Partner | Commercial REALTOR®

701.223.2450

MIKE@ASPENGROUPPREALESTATE.COM



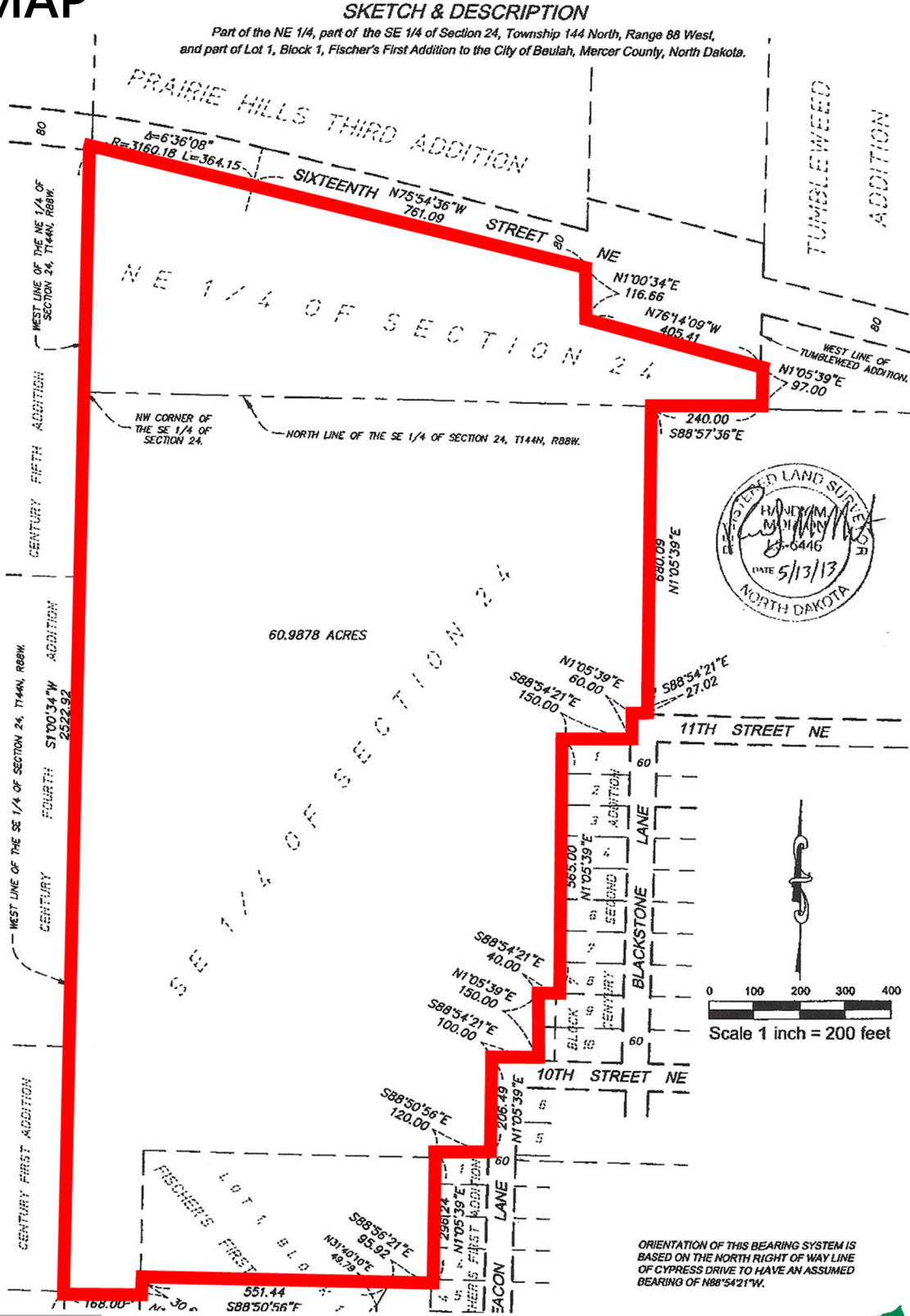
WWW.ASPENGROUPPREALESTATE.COM



# FOR SALE

ADDRESS TBD | BEULAH, ND

## PLAT MAP



### MICHAEL ILSE

Broker Associate | Partner | Commercial REALTOR®

701.223.2450

MIKE@ASPENGROUPREALESTATE.COM



WWW.ASPENGROUPREALESTATE.COM



**FOR SALE**  
ADDRESS TBD | BEULAH, ND

## LOCATION MAP



**MICHAEL ILSE**

Broker Associate | Partner | Commercial REALTOR®

701.223.2450

MIKE@ASPENGROUPREALESTATE.COM

Connect With Us!



Serving North Dakota's Commercial Real Estate Needs Since 1999.