



AREA 57

COMMERCIAL RETAIL OR OFFICE SPACE
202.208.220 & 226 E GREENFIELD LANE, BISMARCK

FOR LEASE

Mike Ilse

701-223-2450

mike@aspengrouprealestate.com

Charles Reichert

701-223-2450

charles@aspengrouprealestate.com

PROPERTY OFFERINGS

AREA 57
202.208.220 & 226 E GREENFIELD LANE, BISMARCK



Aspen Group LLP is pleased to offer, this one-of-a-kind multi-purpose environment where living, shopping, working, playing and socializing coexist.

The subject property consists of 4 mixed-use buildings ideally situated in rapidly growing North Bismarck.

LEASE RATE: \$21.00 PSF

CAM: \$5.50 PSF | TERM: 5 Years

Mike Ilse

BROKER ASSOCIATE | PARTNER | COMMERCIAL REALTOR®

701.223.2450 | mike@aspengrouprealestate.com
424 South 3rd Street, Suite 2 | Bismarck, ND 58504
aspengrouprealestate.com | [@aspengroupllp](https://www.instagram.com/aspengroupllp)

Charles Reichert

COMMERCIAL REALTOR®

701.223.2450 | charles@aspengrouprealestate.com
424 South 3rd Street, Suite 2 | Bismarck, ND 58504
aspengrouprealestate.com | [@aspengroupllp](https://www.instagram.com/aspengroupllp)

***Subdivided space available. Details and rates are subject to change at any time. Contact us for more information.*

HIGHLIGHTS

AREA 57
202.208.220 & 226 E GREENFIELD LANE, BISMARCK



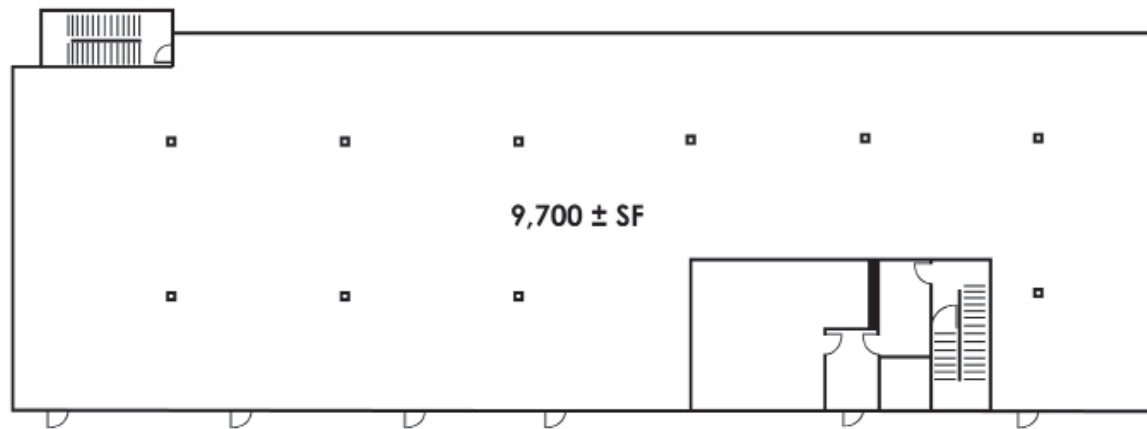
- Serves as a multi-purpose environment where living, shopping, working, playing and socializing coexist.
- State-of-the-Art New Construction
- Located in North Bismarck just off of Washington Street. Near major retailers such as Dicks Sporting Goods, HomeGoods, Costco, Fleet Farm and more!
- (4) Mixed-used, 4-story building featuring numerous apartments and street level commercial spaces.

BUILDING B

AREA 57
202.208.220 & 226 E GREENFIELD LANE, BISMARCK



220 - Building B - 1st Floor



FIRST FLOOR SIZE:

9,700 ± SF

PRICING:

\$21.00 PSF + \$5.50 PSF CAM

HIGHLIGHTS:

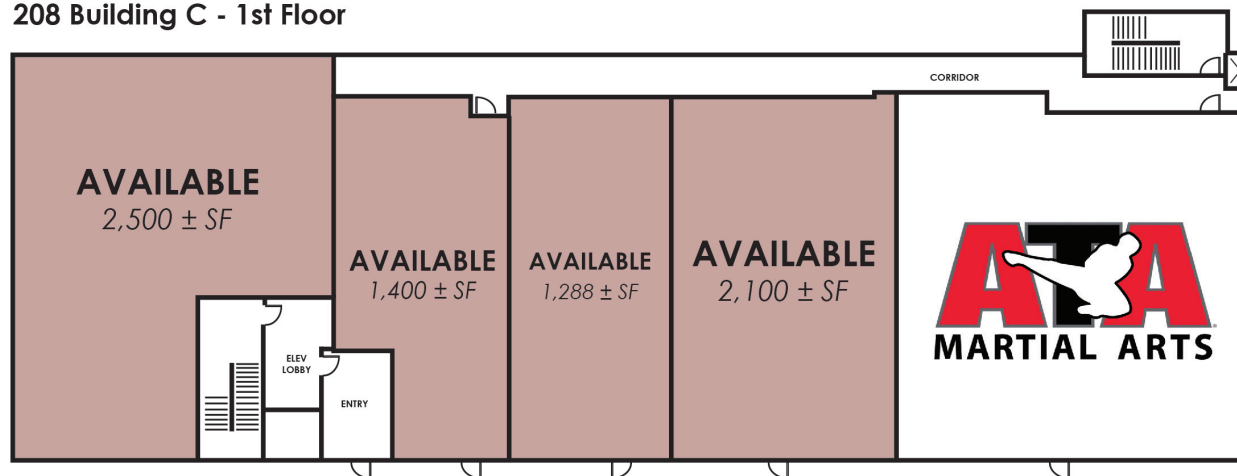
- Delivered as a Vanilla Shell
- Can be subdivided
- Details and rates are subject to change at any time

BUILDING C

AREA 57
202.208.220 & 226 E GREENFIELD LANE, BISMARCK



208 Building C - 1st Floor



SPACE AVAILABLE:

1,288 SF - 2,500 SF

PRICING:

\$21.00 PSF + \$5.50 PSF CAM

BUILDING D

AREA 57
202.208.220 & 226 E GREENFIELD LANE, BISMARCK



202 - Building D - 1st Floor



SPACE AVAILABLE:

1,600 SF

PRICING:

\$21.00 PSF + \$5.50 PSF CAM

AREA 57
202.208.220 & 226 E GREENFIELD LANE, BISMARCK

EXPERIENCE . . . AREA 57





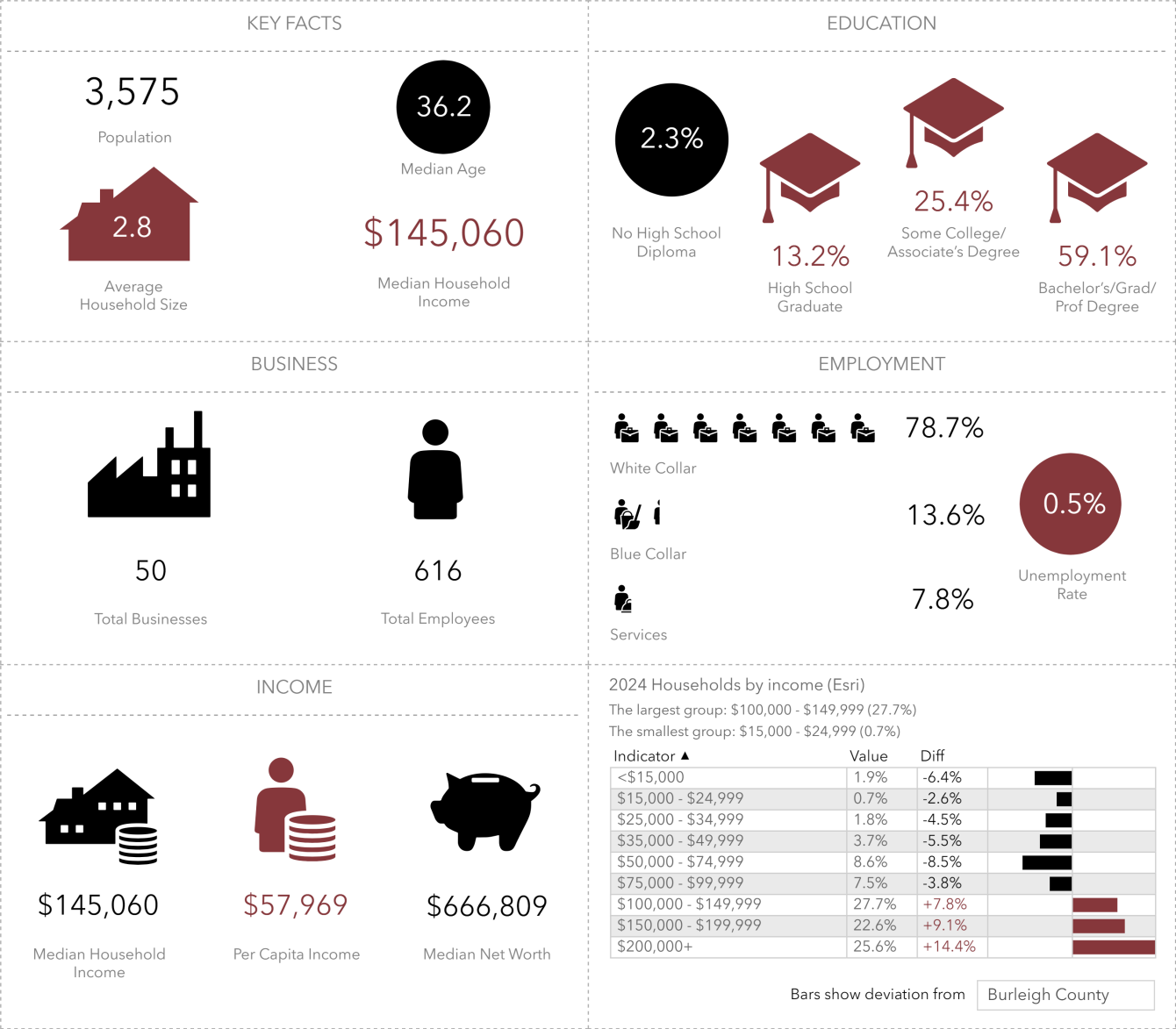
AREA 57
202.208.220 & 226 E GREENFIELD LANE, BISMARCK



LOCATION MAP

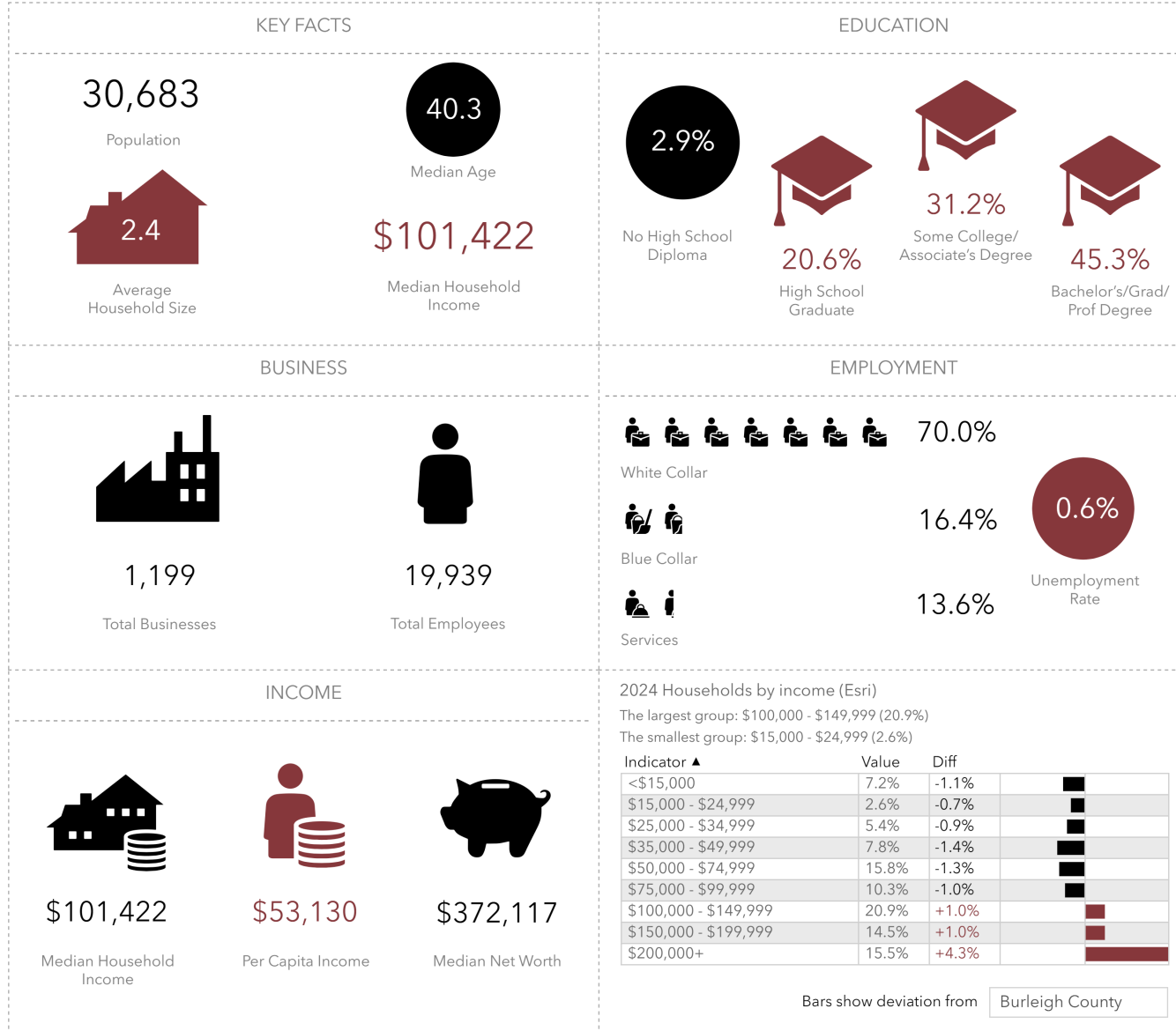
AREA 57
202.208.220 & 226 E GREENFIELD LANE, BISMARCK



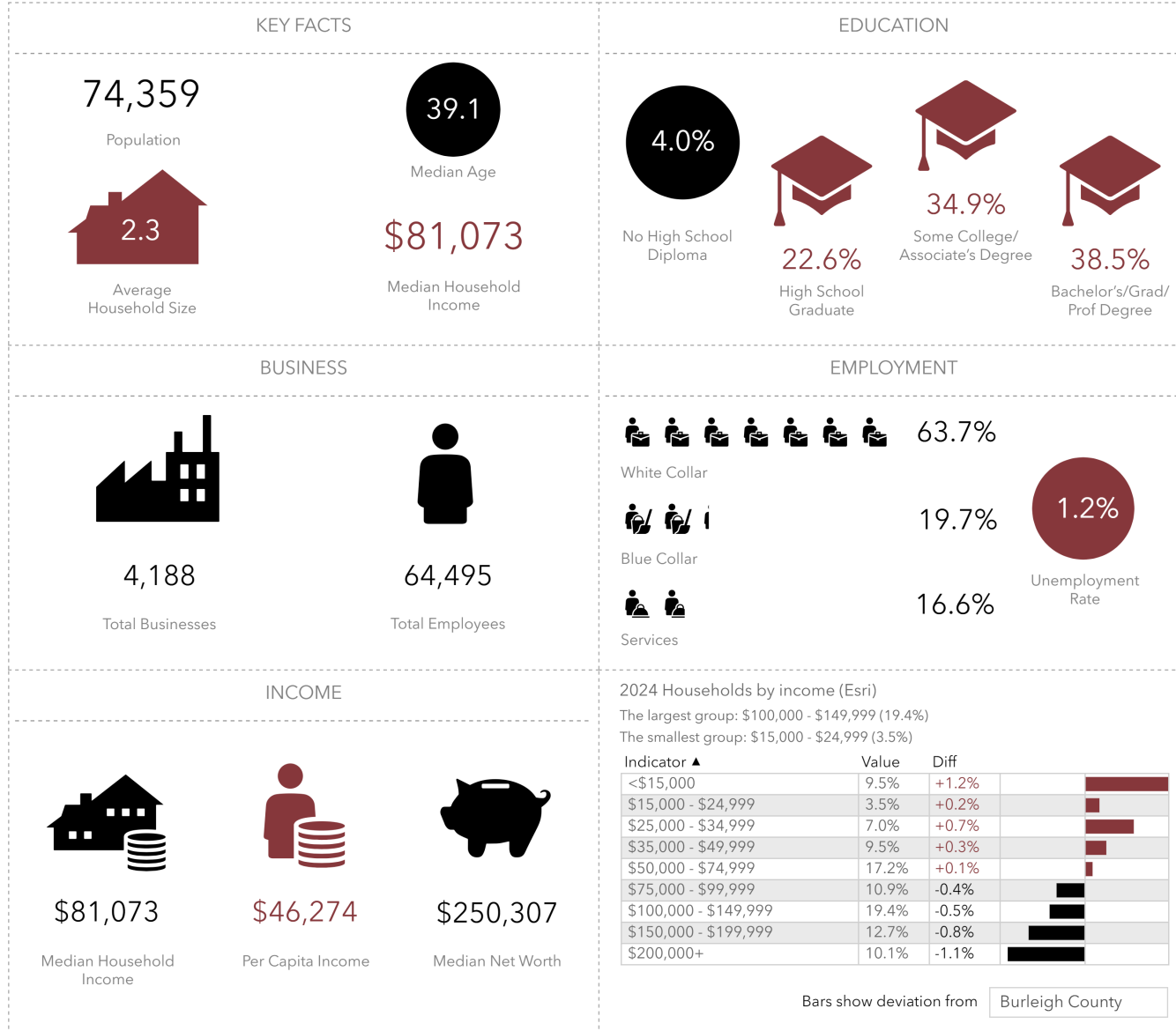


DEMOGRAPHICS

Source: This infographic contains data provided by Esri (2024, 2029), Esri-Data Axle (2024). © 2024 Esri



Source: This infographic contains data provided by Esri (2024, 2029), Esri-Data Axle (2024). © 2024 Esri



Source: This infographic contains data provided by Esri (2024, 2029), Esri-Data Axle (2024). © 2024 Esri



Mike Ilse

BROKER ASSOCIATE | PARTNER | COMMERCIAL REALTOR®

701.223.2450 | mike@aspengroupprealstate.com
424 South 3rd Street, Suite 2 | Bismarck, ND 58504
aspengroupprealstate.com | [@aspengroupllp](https://www.instagram.com/aspengroupllp)

Charles Reichert

COMMERCIAL REALTOR®

701.223.2450 | charles@aspengroupprealstate.com
424 South 3rd Street, Suite 2 | Bismarck, ND 58504
aspengroupprealstate.com | [@aspengroupllp](https://www.instagram.com/aspengroupllp)

