



SPACE AVAILABLE:
2ND FLOOR | 1,075 SF

PRICE:
\$21.00 PSF NNN

HIGHLIGHTS:

- 5 Year Minimum
- New Addition Construction
- Vanilla Shell
- Large Windows Providing an Abundance of Light
- Common Area Restrooms
- Elevator Access
- Off Street Parking
- High Traffic Counts & Excellent visibility on the corner of Main Ave & 9th St in Downtown Bismarck



Mike Ilse

**Broker Associate | Partner
Commercial Realtor®**

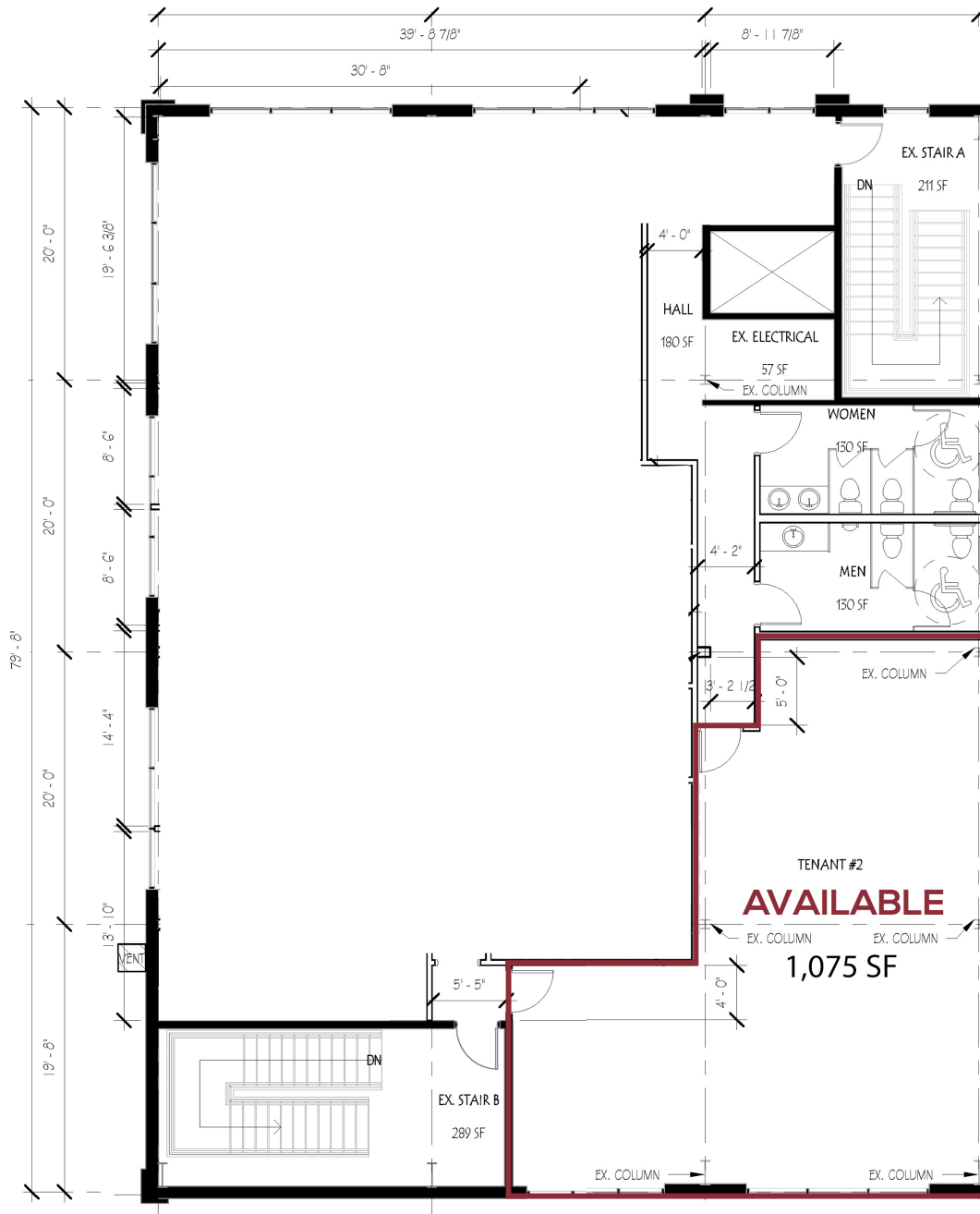
701.223.2450

mike@aspengroupprealestate.com

424 S 3rd Street, Suite 2 | Bismarck, ND | WWW.ASPENGROUPPREALESTATE.COM

This information has been secured from sources we believe to be reliable, but we make no representation or warranties, expressed or implied, as to the accuracy of the information. All references to age, square footage, income and expenses are approximate. Buyers or lessors should conduct their own independent investigations and rely on those results.

SPACE AVAILABLE



Mike Ilse

Broker Associate | Partner
Commercial Realtor®

701.223.2450

mike@aspengroupprealestate.com

PROPERTY PHOTOS



Mike Ilse

Broker Associate | Partner
Commercial Realtor®

701.223.2450

mike@aspengroupprealestate.com

LOCATION MAP



Mike Ilse

Broker Associate | Partner
Commercial Realtor®

701.223.2450

mike@aspengroupprealstate.com