



SPACE AVAILABLE:

7,920 SF BUILDING

8 UNITS | 2 BEDS & 1 BATH

PRICE:

\$675,000.00

HIGHLIGHTS:

- Well kept multi unit complex 40 miles from Bismarck/Mandan
- (8) 2 Bed, 1 Bath Units
- Steel Roof
- Common Laundry
- Detached Garages
- Window AC Units
- Hot water boiler
- Baseboard Heating
- Great Occupancy History
- City water, sewer, natural gas & electricity



Scott Ritter

Broker Associate | Partner
Commercial Realtor®

701.223.2450

scott@aspengroupprealstate.com

424 S 3rd Street, Suite 2 | Bismarck, ND | WWW.ASPENGROUPPREALSTATE.COM

This information has been secured from sources we believe to be reliable, but we make no representation or warranties, expressed or implied, as to the accuracy of the information. All references to age, square footage, income and expenses are approximate. Buyers or lessors should conduct their own independent investigations and rely on those results.

PROPERTY DETAILS

PID #: 66-0260000; 66-0246000

Legal Description: SUBDIV:NEW SALEM PROPER BLK:23 LOTS 1-2-3 & W 1/2 LOT 4

Year Built: 1995

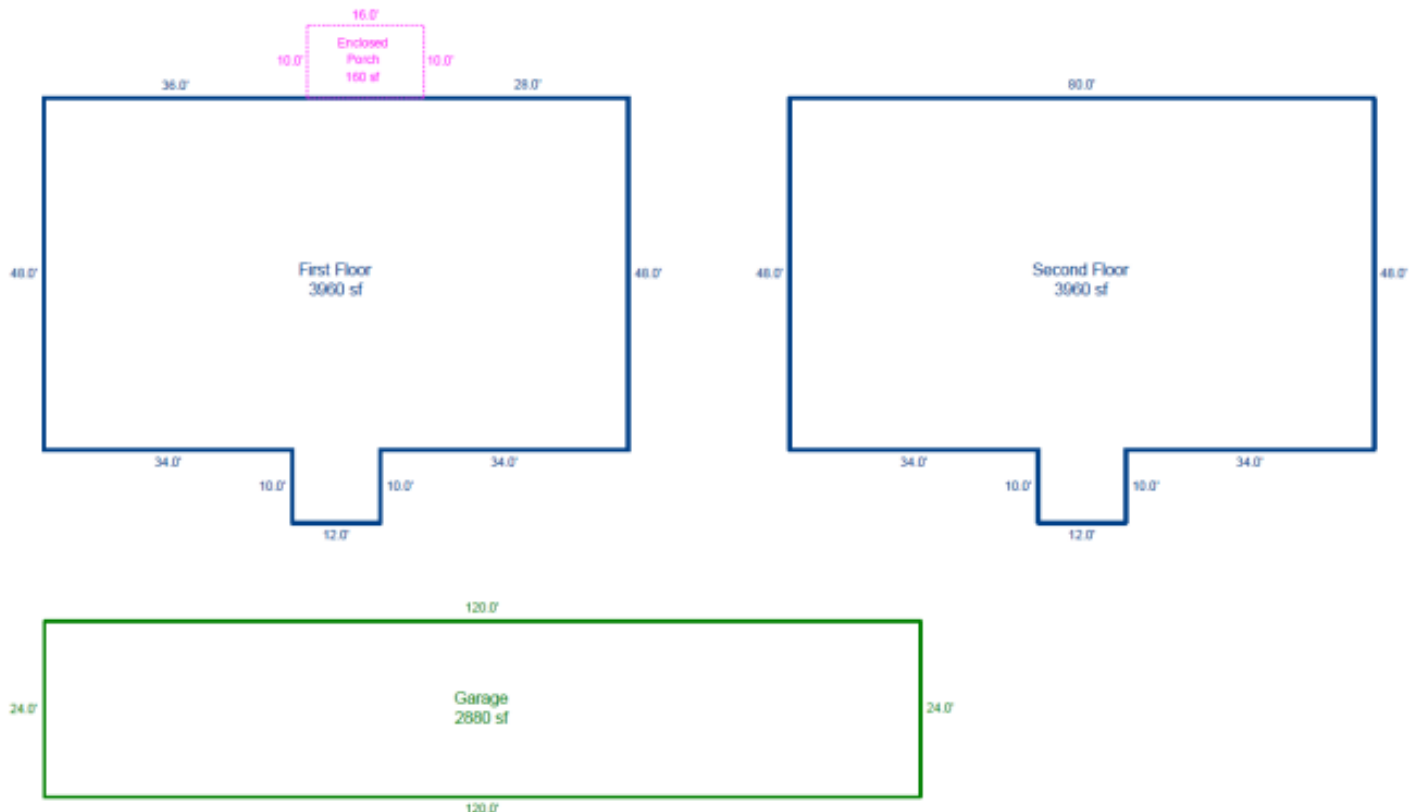
Zoning: ETZ

Land Area: 19,250 SF (0.44 Acres)

2023 Taxes: \$2,696.61 (66-0260000); \$668.14 (66-0246000) | Total: \$3,364.75

Specials: None at this time

Building Insurance: \$536.00/month



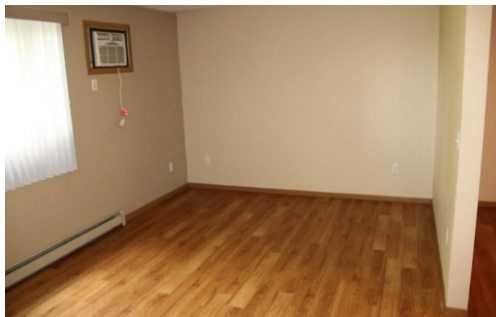
Scott Ritter

Broker Associate | Partner
Commercial Realtor®

701.223.2450

scott@aspengroupprealstate.com

PROPERTY PHOTOS



Scott Ritter

Broker Associate | Partner
Commercial Realtor®

701.223.2450

scott@aspengroupprealstate.com

PROPERTY PHOTOS



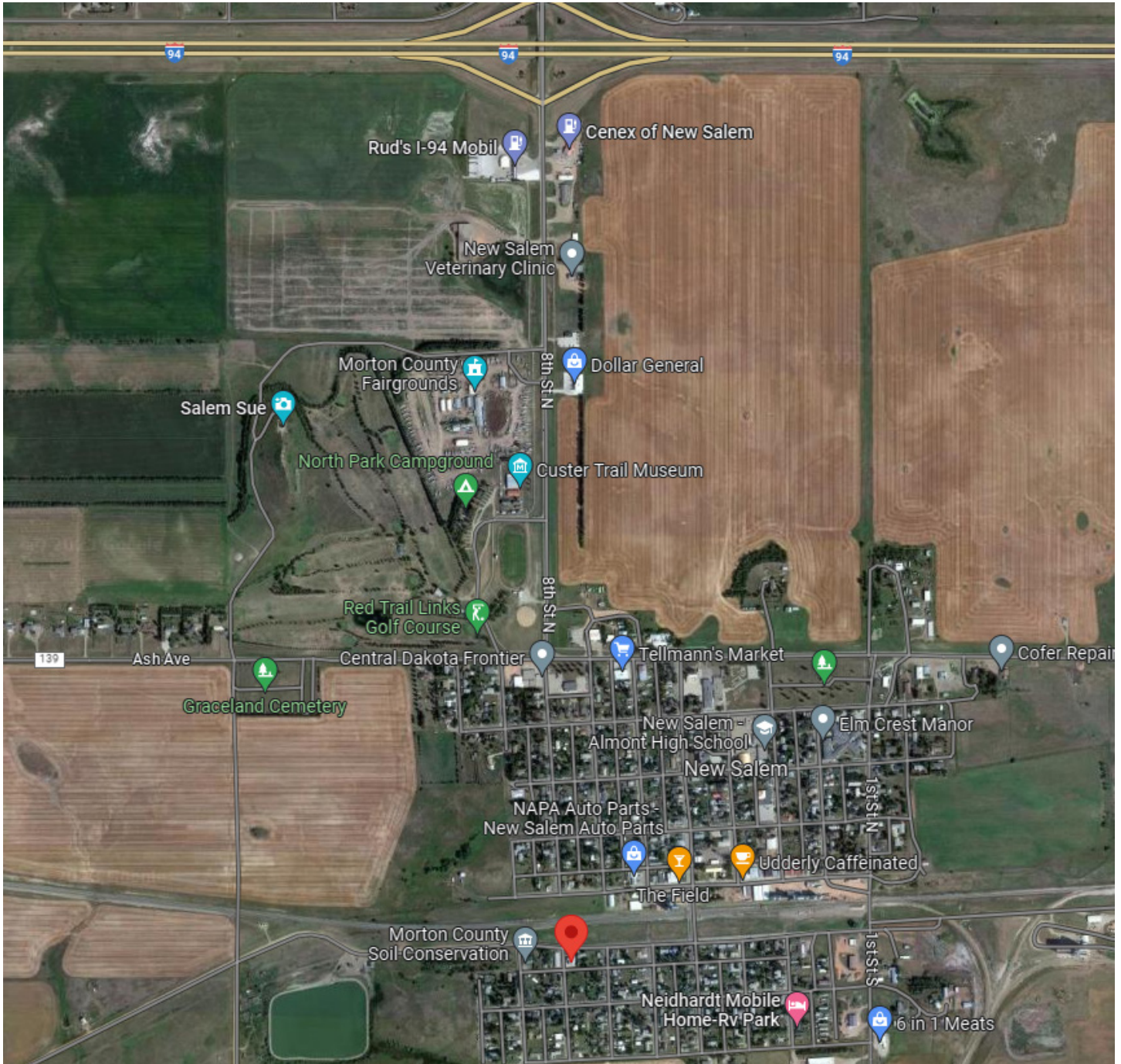
Scott Ritter

Broker Associate | Partner
Commercial Realtor®

701.223.2450

scott@aspengrouprealestate.com

LOCATION MAP



Scott Ritter

Broker Associate | Partner
Commercial Realtor®

701.223.2450

scott@aspengrouprealestate.com