



SPACE AVAILABLE:
SUITE A - Approximately 810 SF

PRICE:
\$925/Month - 3 Year Minimum

HIGHLIGHTS:

- 1 - Private Office
- Open work area
- Newly Remodeled
- Signage
- Off Street Parking
- Common Bathroom



Mike Ilse

**Broker Associate | Partner
Commercial Realtor®**

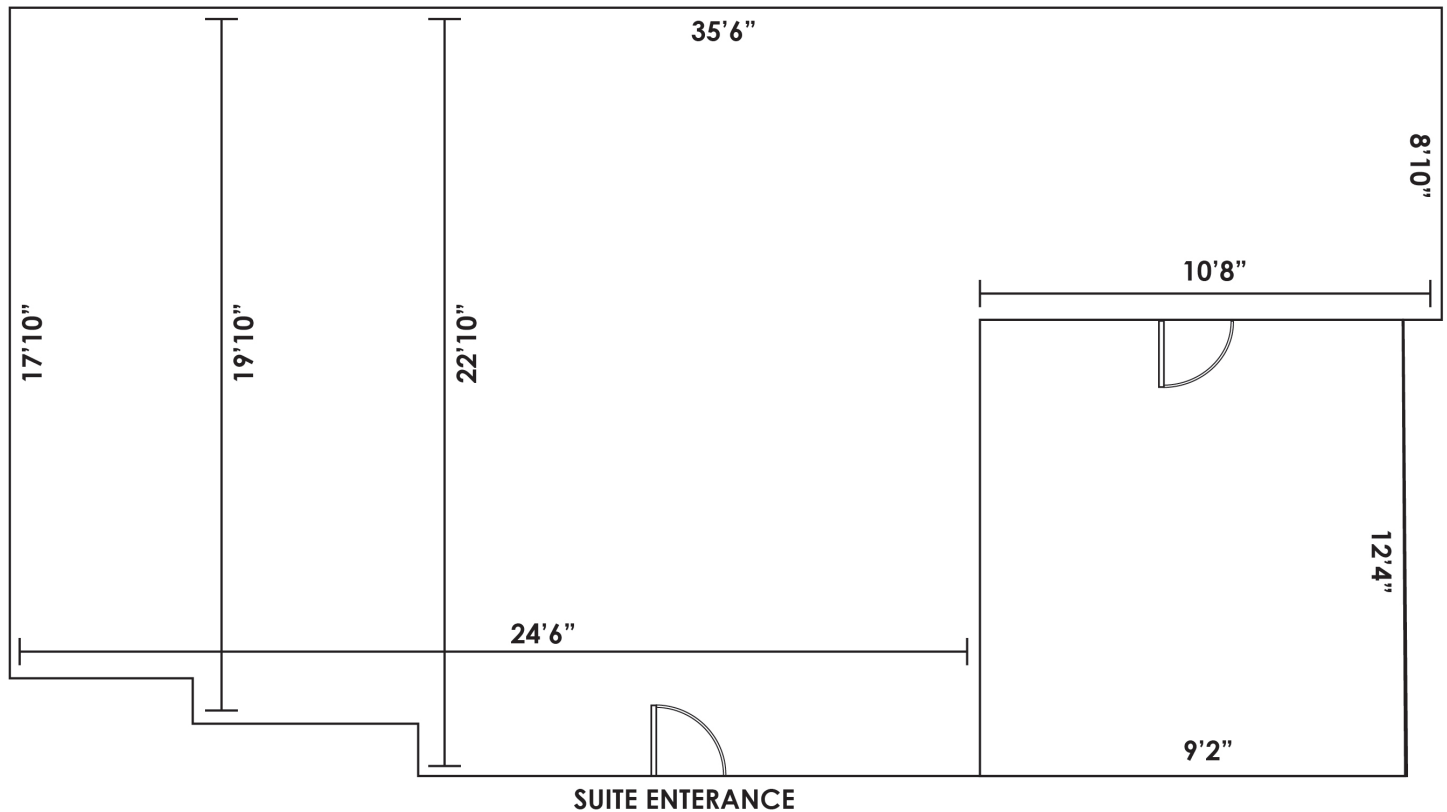
701.223.2450

mike@aspengrouprealestate.com

424 S 3rd Street, Suite 2 | Bismarck, ND | WWW.ASPENGROUPREALESTATE.COM

This information has been secured from sources we believe to be reliable, but we make no representation or warranties, expressed or implied, as to the accuracy of the information. All references to age, square footage, income and expenses are approximate. Buyers or lessors should conduct their own independent investigations and rely on those results.

FLOOR PLAN



Mike Ilse

Broker Associate | Partner
Commercial Realtor®

701.223.2450

mike@aspengrouprealestate.com

INTERIOR PICTURES



Mike Ilse

Broker Associate | Partner
Commercial Realtor®

701.223.2450

mike@aspengroupprealestate.com

LOCATION MAP & TRAFFIC COUNTS



Intersection of Washington & Memorial Hwy = 5,795 Average Daily Travel



Mike Ilse

Broker Associate | Partner
Commercial Realtor®

701.223.2450

mike@aspengroupprealstate.com