



SPACE AVAILABLE:

SUITE 101 | 1,315 SF

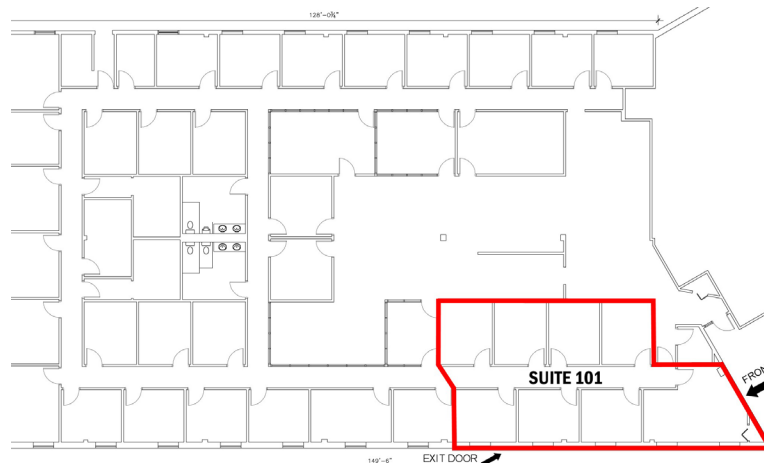
PRICE:

\$2,050.00/month

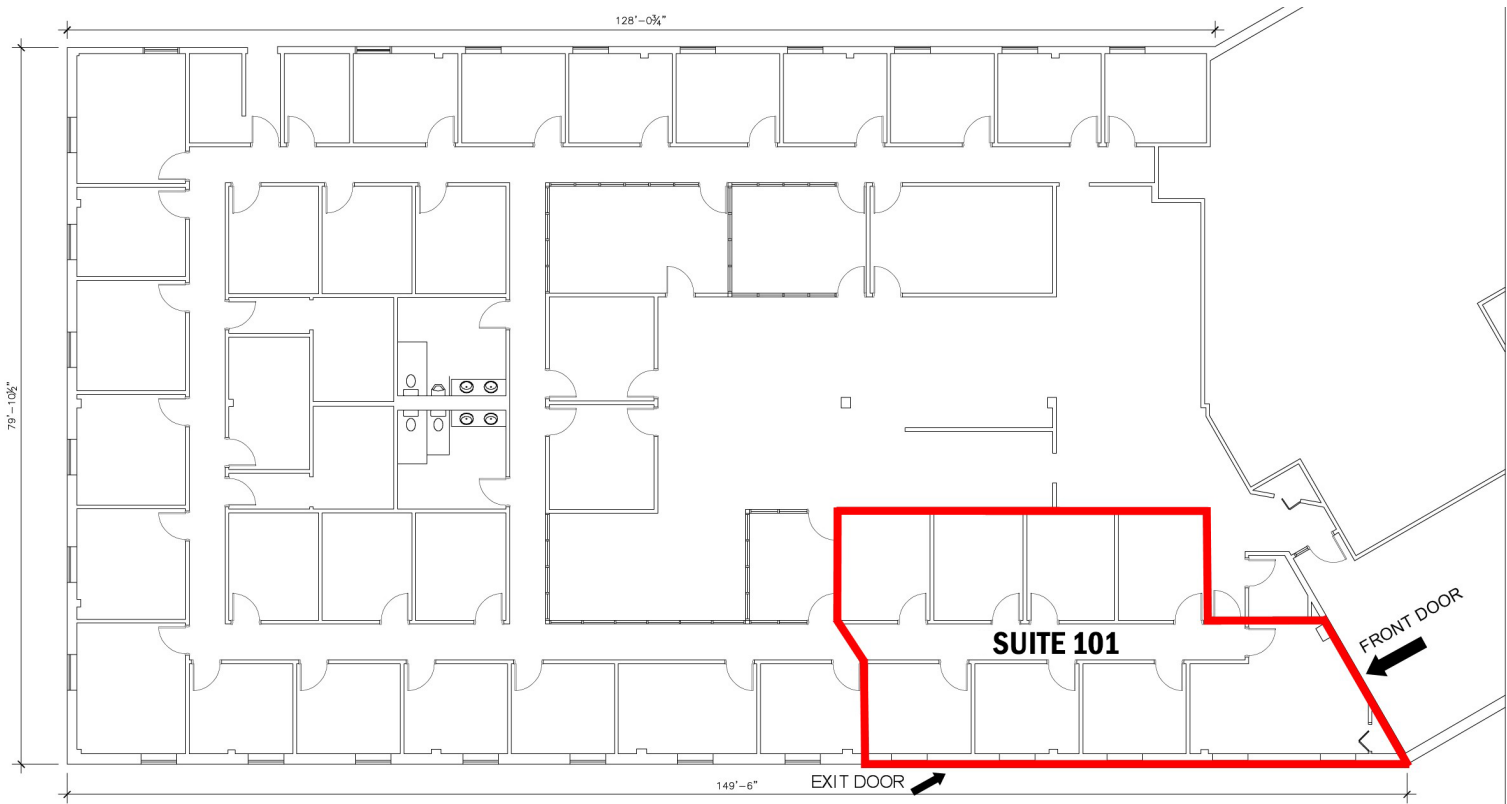
**Full Service Less Janitorial

HIGHLIGHTS:

- Direct Outside Access
- Reception Area
- 7 Private Offices
- ADA Accessible
- Ample Parking
- Join a great mix of tenants in this Class A Office Building



FLOOR PLAN



Excellent location near Kirkwood Mall, numerous restaurants/coffee shops, financial institutions and hotels.

Full Service Rent Includes:

Electricity, taxes, snow removal, heat & common area janitorial

LOCATION MAP



424 S 3rd Street, Suite 2 | Bismarck, ND | WWW.ASPENGROUPREALESTATE.COM

This information has been secured from sources we believe to be reliable, but we make no representation or warranties, expressed or implied, as to the accuracy of the information. All references to age, square footage, income and expenses are approximate. Buyers or lessors should conduct their own independent investigations and rely on those results.