



SPACE AVAILABLE:

Lot: 2.631 Acres (114,606 SF)

PRICE:

\$12.00 PSF

HIGHLIGHTS:

- Large land parcel near Costco
- Great development potential with excellent visibility and high traffic counts
- Great visibility off Highway 83
- City services in Elbowoods Lane
- Future city zoning CG
- Will need to be annexed into city
- Well on property



Jessica Knutson

CCIM | Partner
Commercial Realtor®

701.223.2450

jessica@aspengroupprealstate.com



Charles Reichert

Commercial Realtor®

701.223.2450

charles@aspengroupprealstate.com

424 S 3rd Street, Suite 2 | Bismarck, ND | WWW.ASPENGROUPPREALSTATE.COM

This information has been secured from sources we believe to be reliable, but we make no representation or warranties, expressed or implied, as to the accuracy of the information. All references to age, square footage, income and expenses are approximate. Buyers or lessors should conduct their own independent investigations and rely on those results.

PROPERTY DETAILS

Parcel ID: 31-139-80-00-10-640

Legal Description: HAY CREEK TOWNSHIP Section 10 PT SW1/4;BEG @ PT 1

Current Land Use: Residential

Proposed Zoning: Commercial

2023 Taxes: \$814.05

Special Assessments: None at this time

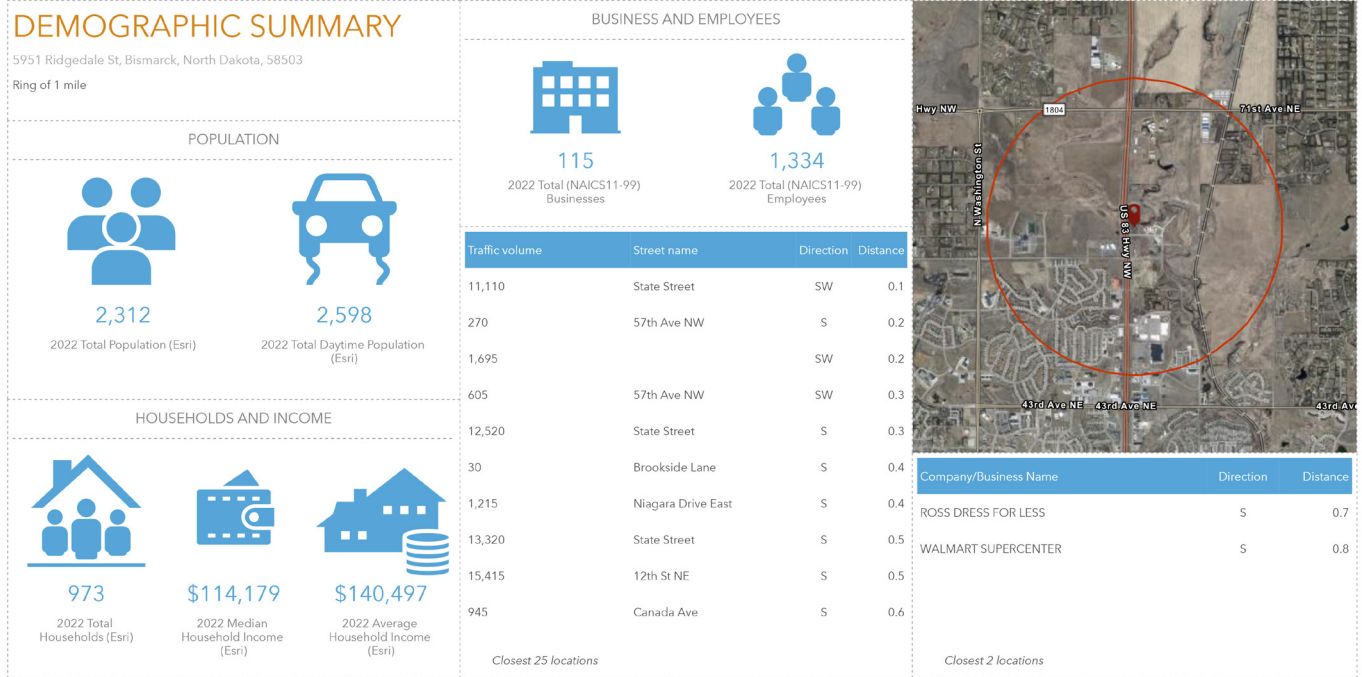
LOCATION MAP



424 S 3rd Street, Suite 2 | Bismarck, ND | WWW.ASPENGROUPREALESTATE.COM

This information has been secured from sources we believe to be reliable, but we make no representation or warranties, expressed or implied, as to the accuracy of the information. All references to age, square footage, income and expenses are approximate. Buyers or lessors should conduct their own independent investigations and rely on those results.

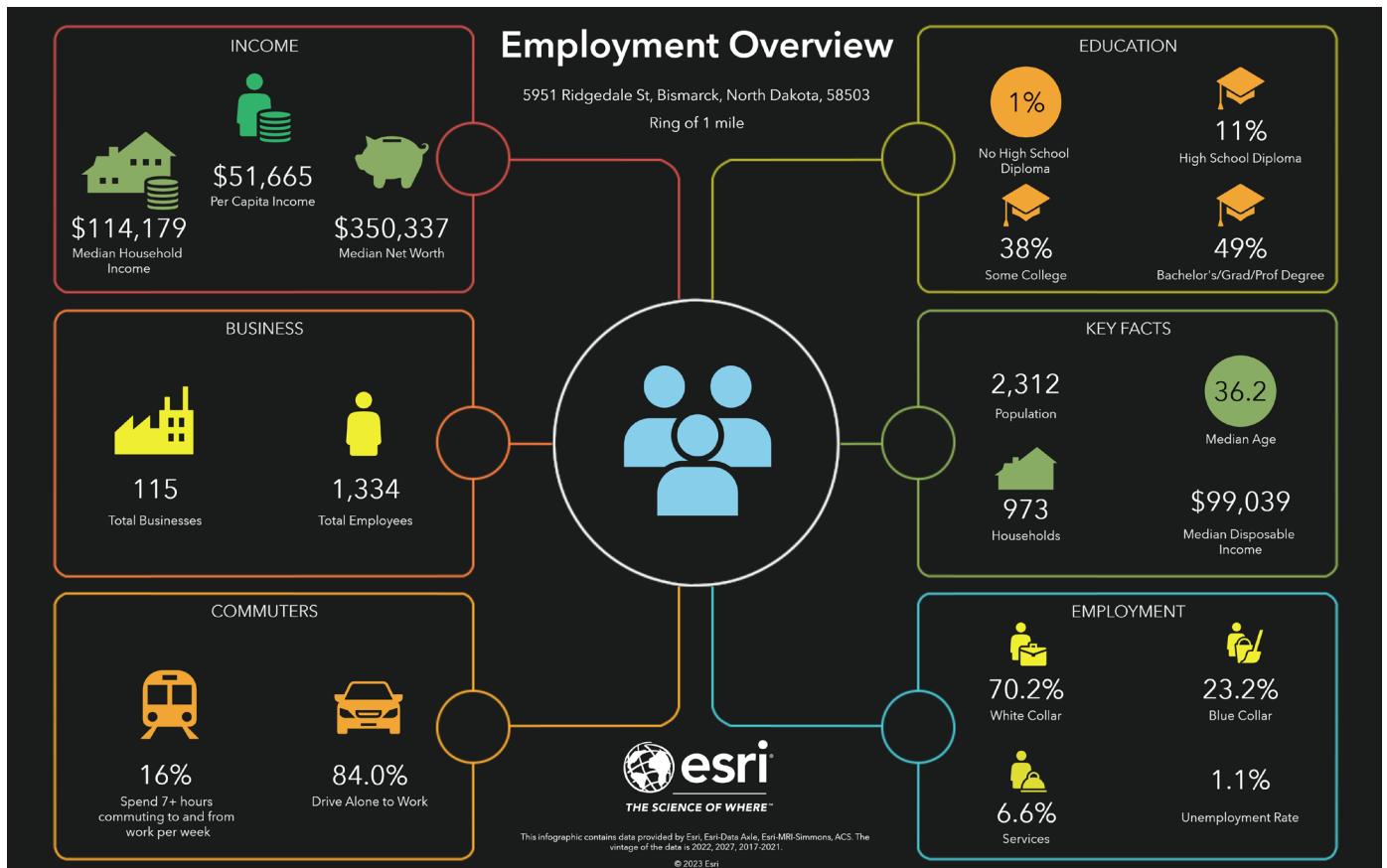
DEMOGRAPHIC SUMMARY - 1 MILE



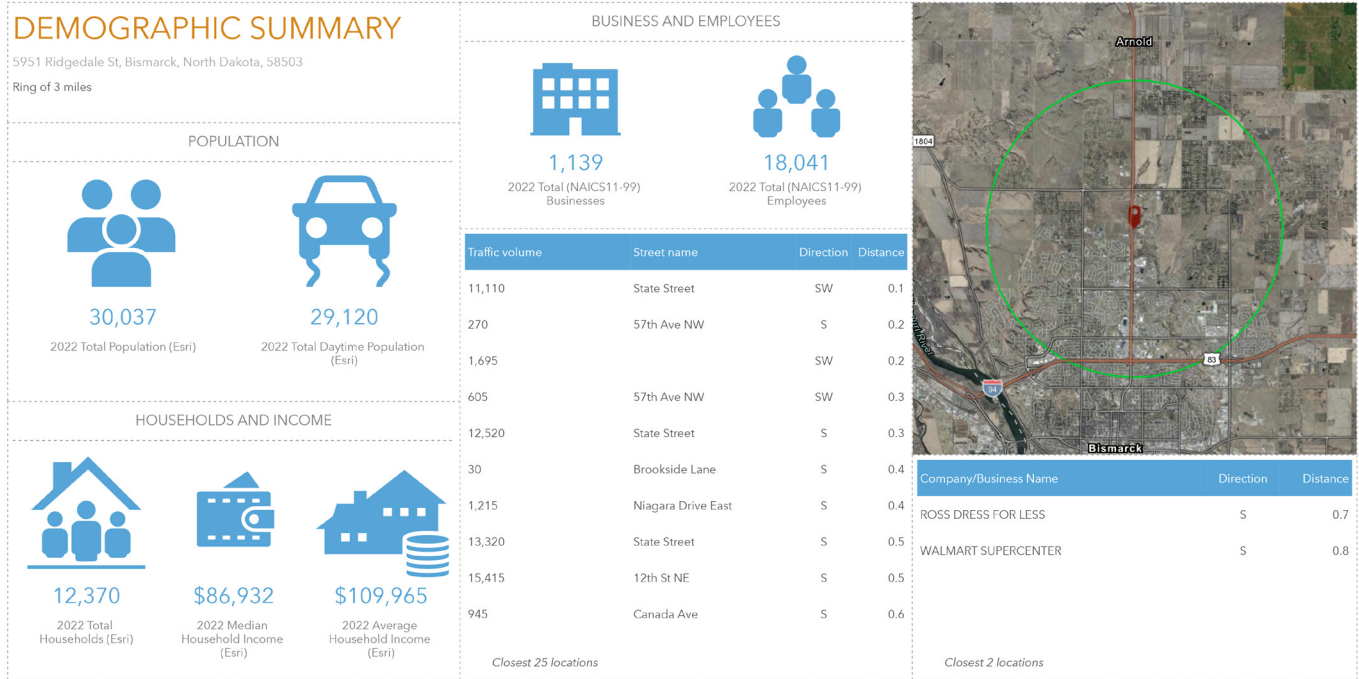
Source: Esri-Data Ave. Esri. The vintage of the data is 2022.

© 2023 Esri

EMPLOYMENT OVERVIEW - 1 MILE



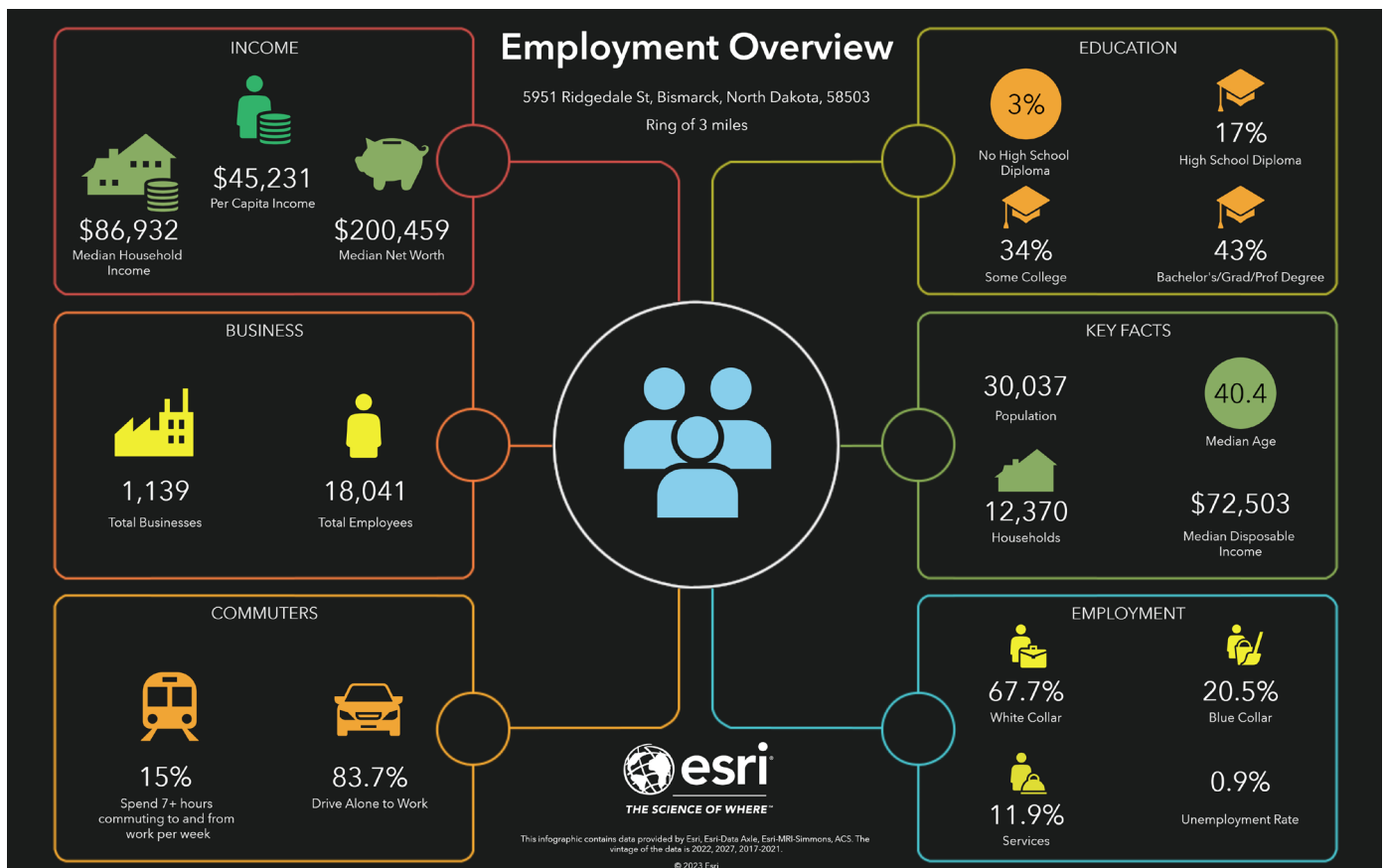
DEMOGRAPHIC SUMMARY - 3 MILES



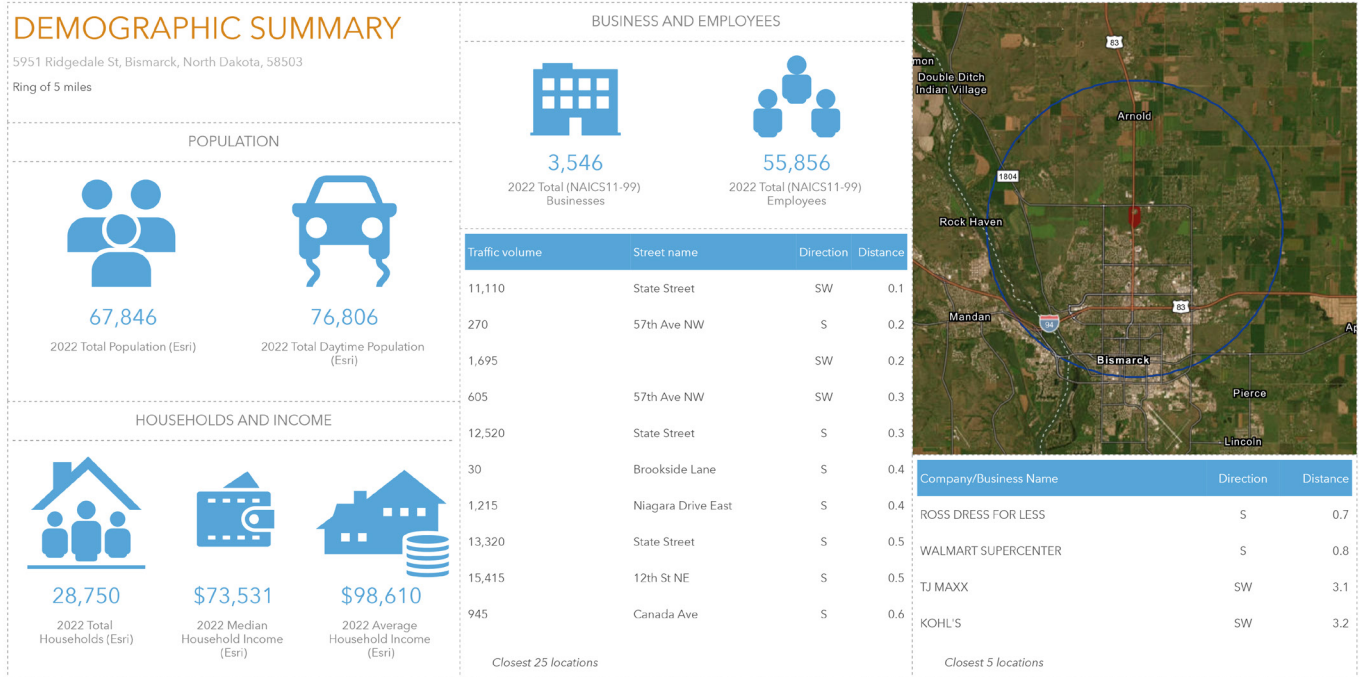
Source: Esri-Data Ave. Esri. The vintage of the data is 2022.

© 2023 Esri

EMPLOYMENT OVERVIEW - 3 MILES



DEMOGRAPHIC SUMMARY - 5 MILES



Source: Esri-Data Ave. Esri. The vintage of the data is 2022.

© 2023 Esri

EMPLOYMENT OVERVIEW - 5 MILES

