



## LOT SIZE:

8.9 ACRES | 387,663 SF

## PRICE:

\$14.00 PSF



## Mike Ilse

Broker Associate | Partner  
Commercial Realtor®

**701.223.2450**

[mike@aspengrouprealestate.com](mailto:mike@aspengrouprealestate.com)

## HIGHLIGHTS:

- 3 Parcels Available - Willing to Subdivide!
- Zoning: CG - Commercial
- Access to Hwy 83 via Brookside Ln, 19th St & 57th Ave NE
- Utilities stubbed
- Located directly east of Costco, near Furniture Row & Tractor Supply and North of major Hay Creek Shops' retailers such as Dick's Sporting Goods, Michaels, Ross, Ulta Beauty, & more!

**424 S 3rd Street, Suite 2 | Bismarck, ND | [WWW.ASPENGROUPPREALESTATE.COM](http://WWW.ASPENGROUPPREALESTATE.COM)**

This information has been secured from sources we believe to be reliable, but we make no representation or warranties, expressed or implied, as to the accuracy of the information. All references to age, square footage, income and expenses are approximate. Buyers or lessors should conduct their own independent investigations and rely on those results.

## PROPERTY DETAILS

### 5610 NORTH 19TH STREET, BISMARCK

Parcel ID: 1459-003-001

Legal Description: Lot 1, Block 3, Meadowlark Commercial 7th Addn

Zoning: CG—Commercial

Lot Size: 223,330 SF | 5.13 Acres

2023 Taxes: \$8,145.69

Special Assessments: \$165.72 Installment; \$960.98 Remaining Balance

### 5524 NORTH 19TH STREET, BISMARCK

Parcel ID: 1459-003-100

Legal Description: Lot 2, Block 3, Meadowlark Commercial 7th Addn

Zoning: CG—Commercial

Lot Size: 83,794 SF | 1.92 Acres

2023 Taxes: \$3,173.96

Special Assessments: None at this time

### 5508 NORTH 19TH STREET, BISMARCK

Parcel ID: 1459-003-200

Legal Description: Lot 3, Block 3, Meadowlark Commercial 7th Addn

Zoning: CG—Commercial

Lot Size: 80,539 SF | 1.85 Acres

2023 Taxes: \$3,092.49

Special Assessments: None at this time



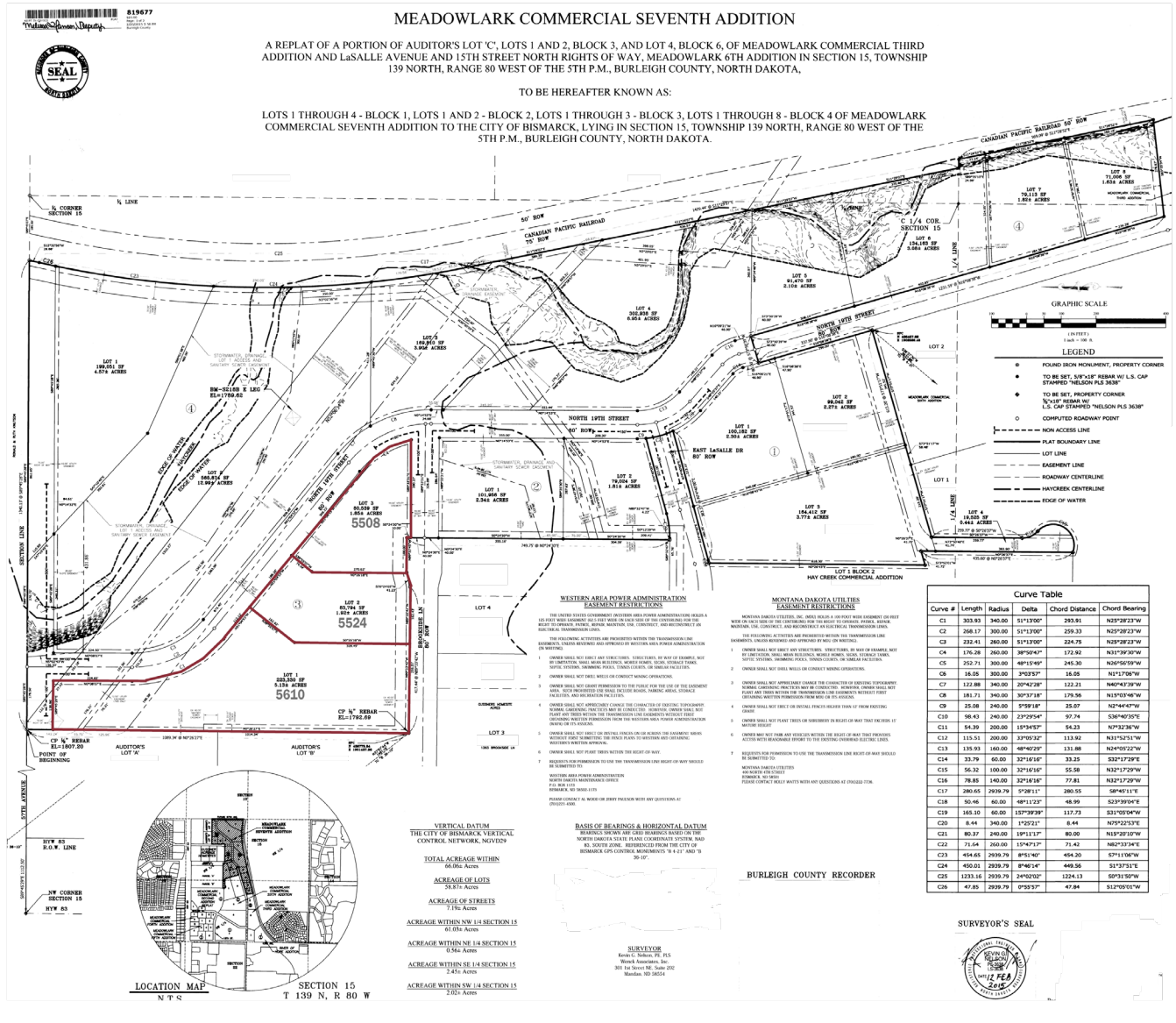
**Mike Ilse**

Broker Associate | Partner  
Commercial Realtor®

**701.223.2450**

[mike@aspengroupprealstate.com](mailto:mike@aspengroupprealstate.com)

**PLAT MAP**



**Mike Ilse**  
Broker Associate | Partner  
Commercial Realtor®  
**701.223.2450**  
mike@aspengrouprealestate.com

**IN THE AREA**

**DINING | HOSPITALITY**



**SHOPPING | RETAIL**



**OFFICE | BANKING | MEDICAL**



**COMMUNITY | RECREATION**



## NEIGHBORHOOD AERIAL



- |  |  |   |
|--|--|---|
| <b>1</b> Bismarck Motor Company  | <b>10</b> Ross Dress for Less<br>Maurices      | <b>17</b> Starion Bank                              |
| <b>2</b> Furniture Row   | <b>11</b> Kirkland's<br>Star Nails             | <b>18</b> Once Upon a Child<br>Dunn Brothers Coffee |
| <b>3</b> Tractor Supply  | <b>12</b> Dollor Tree<br>Pizza Ranch<br>X-Golf | <b>19</b> Wingate by Wyndham                        |
| <b>4</b> Ale Works   | <b>13</b> Dick's Sporting Goods                | <b>20</b> Sažon                                     |
| <b>5</b> Tires Plus  | <b>14</b> Michael's<br>Ulta Beauty             | <b>21</b> Charras & Tequila                         |
| <b>6</b> Skyzone   | <b>15</b> Walmart                              | <b>22</b> Buffalo Wings & Rings                     |
| <b>7</b> COSTCO  | <b>16</b> America's Mattress<br>Gamestop       |   |
| <b>8</b> T-Mobile<br>Aspen Dental                                      |  |   |
| <b>9</b> Mattress Firm<br>Sleep Number<br>AT&T<br>Verizon<br>Pancheros |  |   |