



**SPACE AVAILABLE:**  
3,880 SF

**PRICE:**  
\$979,900.00

**HIGHLIGHTS:**

- Stand-alone professional building with existing drive-thru
- Downtown location with on-site parking
- Fully finished lower level with private offices and bathrooms
- Great Signage
- Fully brick exterior
- Recently updated interior
- Corner location
- Located near medical and financial districts



**Michael Ilse**

**Broker Associate | Partner  
Commercial Realtor®**

**701.223.2450**

**mike@aspengrouprealestate.com**

**424 S 3rd Street, Suite 2 | Bismarck, ND | WWW.ASPENGROUPREALESTATE.COM**

This information has been secured from sources we believe to be reliable, but we make no representation or warranties, expressed or implied, as to the accuracy of the information. All references to age, square footage, income and expenses are approximate. Buyers or lessors should conduct their own independent investigations and rely on those results.

## PROPERTY INFORMATION

**PID#:** 0015-024-025

**LEGAL DESCRIPTION:** NORTHERN PACIFIC Block: 24 N.10' OF LOT 5 & ALL OF LOT 6 (OR LOT 5 LESS S40' & ALL LOT 6)

**YEAR BUILT:** 1971

**ZONING:** DC - CORE ZONING DISTRICT

**LOT SIZE:** 8,416 SF

**2022 TAXES:** \$6,715.43

**SPECIAL ASSESSMENT INSTALLMENT:** \$146.99

**SPECIAL ASSESSMENT BALANCE DUE:** \$391.90

## EXTERIOR PICTURES



**Michael Ilse**  
Broker Associate | Partner  
Commercial Realtor®  
**701.223.2450**  
mike@aspengroupprealstate.com

# INTERIOR PICTURES



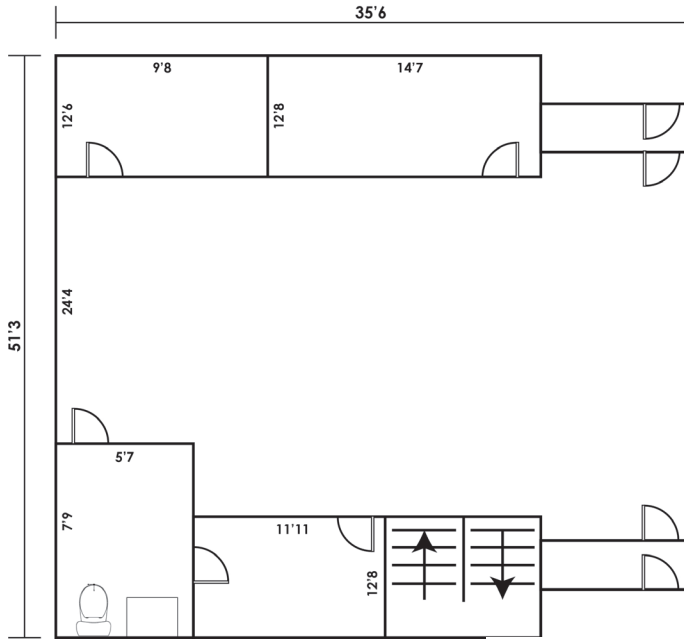
**Michael Ilse**  
Broker Associate | Partner  
Commercial Realtor®  
**701.223.2450**  
mike@aspengrouprealestate.com

## INTERIOR PICTURES CONT.



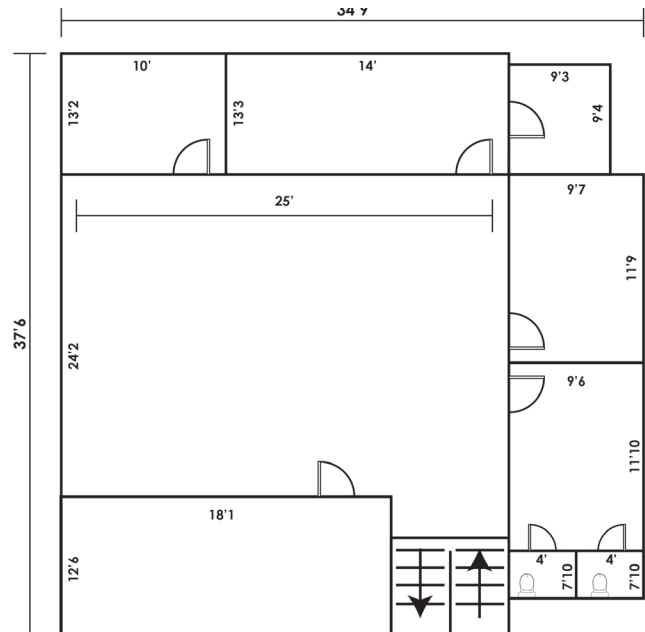
**Michael Ilse**  
Broker Associate | Partner  
Commercial Realtor®  
**701.223.2450**  
mike@aspengrouprealestate.com

# FLOOR PLAN



## MAIN LEVEL

## BASEMENT



**Michael Ilse**  
Broker Associate | Partner  
Commercial Realtor®  
**701.223.2450**  
mike@aspengroupprealestate.com

## JOIN DOWNTOWN BISMARCK!

### FOOD & DRINK

Amina Cucina  
Bistro 1100  
Blarney Stone Pub  
Borrowed Bucks Roadhouse  
Brick Oven Bakery  
Broadway Grill & Tavern  
Burger Time  
Butterhorn  
Coffee Break  
Craftcade  
Dairy Queen  
Elbow Room  
Fireflour Pizzeria  
Gideon's Brewing Company  
Jimmy V's  
JL Beers  
India Clay Oven  
LUFT  
McDonalds  
NoodleZip  
Nutrition Ambition  
Peacock Alley  
Pirogue Grille  
Roundhouse  
Gastro Pub  
Toasted Frog

### SHOPPING/RETAIL

Blink Eyewear  
Boutique 23  
Bridal N' More  
Brides on a Dime  
Crabapple Floral  
Dakota Nuts-N-Candy  
Ferguson Books & More Fleck's  
Furniture & Appliance  
Halberstadt's ND  
J & R Vacuum & Sewing  
Kokkeler's Jewelry  
lula b. boutique  
Modern Eyes  
Red Wing Shoes  
Seeds of Hope Thrift Store  
Spaces  
Stella's  
Terry's Health Products  
Walker's n' Daughters Jewelers  
Westley's Jewelry  
Zimmerman's Furniture

### BANKING/FINANCIAL

American Bank Center  
Ameriprise Financial  
BNC National Bank  
Capital Credit Union  
Choice Bank  
Country Financial  
First Western Bank & Trust  
Gate City Bank  
Kirkwood Bank & Trust  
Starion Bank  
US Bank  
Vue Community Credit Union Wells Fargo

### HEALTH/MEDICAL

Active Life Chiropractic  
Bismarck-Burleigh Public Health  
CHI St. Alexius Hospital  
CHI St. Alexius Urgent Care  
Dakota Eye Institute  
Dakota Pharmacy  
Mid Dakota Clinic  
Prairie Rose Family Dentists  
Proxima150  
Sanford Health  
Smiles By Design  
UND Center for Family Medicine

### COMMUNITY/RECREATION

Belle Mehus Auditorium  
Bismarck Municipal Ball Park  
Bismarck Art & Galleries Assn  
Bismarck Event Center  
Bismarck Veterans Memorial Public  
Library  
The Capital Gallery  
Custer Park  
Dakota Stage Ltd.  
Elks Aquatic Center  
Peace Park  
World War Memorial Building

### PROFESSIONAL SERVICES

Alchemist Tattoo  
The Barber's Wife  
Black Sheep Tattoo  
Broadway Centre Spa & Salon  
Derma Care Clinic  
Glance Salon & Spa  
Hi Honey Salon  
Pure Skin Aesthetic & Laser Center  
Rejuvenation Place



**Michael Ilse**

Broker Associate | Partner  
Commercial Realtor®

**701.223.2450**

[mike@aspengroupprealestate.com](mailto:mike@aspengroupprealestate.com)

## TRAFFIC COUNTS & WALKABILITY



**Walk Score**

**80**

**Very Walkable!**  
Most errands can be accomplished on foot.

**Bike Score**

**64**

**Bikeable!**  
Some bike infrastructure.



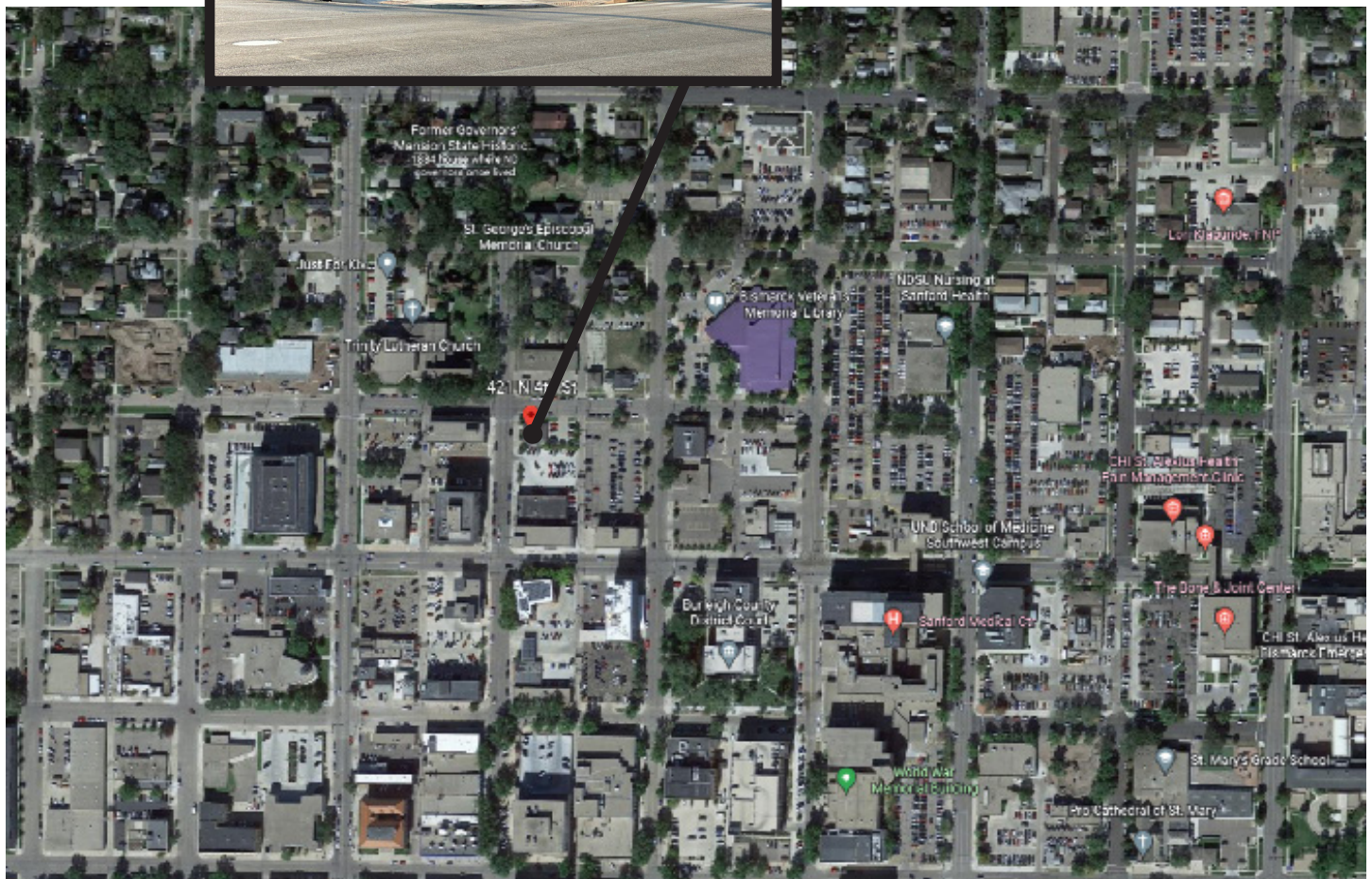
**Michael Ilse**

Broker Associate | Partner  
Commercial Realtor®

**701.223.2450**

[mike@aspengroupprealstate.com](mailto:mike@aspengroupprealstate.com)

## LOCATION MAP



**Michael Ilse**  
Broker Associate | Partner  
Commercial Realtor®  
**701.223.2450**  
maike@aspengrouprealestate.com