



## SPACE AVAILABLE:

4.13 ACRES | 179,763 SF

## PRICE:

\$3,235,734.00

## HIGHLIGHTS:

- 8 Parcels - Must be purchased all as one sale
- Zoning: CG - Commercial
- Easy access to Highway 83 & I-94
- Located near restaurants, hotels, Hay Creek Shops, Ace Hardware, Walmart and Cashwise Foods



**Mathew Reichert**

Broker | Partner | CCIM

**701.223.2450**

[matt@aspengroupprealstate.com](mailto:matt@aspengroupprealstate.com)

**424 S 3rd Street, Suite 2 | Bismarck, ND | [WWW.ASPENGROUPPREALSTATE.COM](http://WWW.ASPENGROUPPREALSTATE.COM)**

This information has been secured from sources we believe to be reliable, but we make no representation or warranties, expressed or implied, as to the accuracy of the information. All references to age, square footage, income and expenses are approximate. Buyers or lessors should conduct their own independent investigations and rely on those results.

## PROPERTY DETAILS

### 4220 NORTH 15TH STREET

Lot 12, Block 1, Capital Elec Headquarters Addn  
PID #: 1625-001-435  
Lot Size: 24,422 SF | .56 Acres  
2022 Taxes: \$641.03  
Specials: None at this time.

### 4214 NORTH 15TH STREET

Lot 11, Block 1, Capital Elec Headquarters Addn  
PID #: 1625-001-425  
Lot Size: 24,256 SF | .56 Acres  
2022 Taxes: \$637.41  
Specials: None at this time

### 4208 NORTH 15TH STREET

Lot 10, Block 1, Capital Elec Headquarters Addn  
PID #: 1625-001-410  
Lot Size: 24,265 SF | .56 Acres  
2022 Taxes: \$637.41  
Specials: None at this time

### 4200 NORTH 15TH STREET

Lot 9, Block 1, Capital Elec Headquarters Addn  
PID #: 1625-001-400  
Lot Size: 24,365 SF | .56 Acres  
2022 Taxes: \$639.82  
Specials: None at this time



**Mathew Reichert**  
Broker | Partner | CCIM  
**701.223.2450**  
[matt@aspengrouprealestate.com](mailto:matt@aspengrouprealestate.com)

## PROPERTY DETAILS

### 4219 NORTH 15TH STREET

Lot 1, Block 2, Capital Elec Headquarters Addn

PID #: 1625-002-001

Lot Size: 20,407 SF | .47 Acres

2022 Taxes: \$536.00

Specials: None at this time.

### 4213 NORTH 15TH STREET

Lot 2, Block 2, Capital Elec Headquarters Addn

PID #: 1625-002-010

Lot Size: 20,615 SF | .47 Acres

2022 Taxes: \$540.83

Specials: None at this time

### 4207 NORTH 15TH STREET

Lot 3, Block 2, Capital Elec Headquarters Addn

PID #: 1625-002-020

Lot Size: 20,709 SF | .48 Acres

2022 Taxes: \$543.25

Specials: None at this time

### 4201 NORTH 15TH STREET

Lot 4, Block 2, Capital Elec Headquarters Addn

PID #: 1625-002-030

Lot Size: 1625-002-030 SF | .48 Acres

2022 Taxes: \$544.45

Specials: None at this time



**Mathew Reichert**

Broker | Partner | CCIM

**701.223.2450**

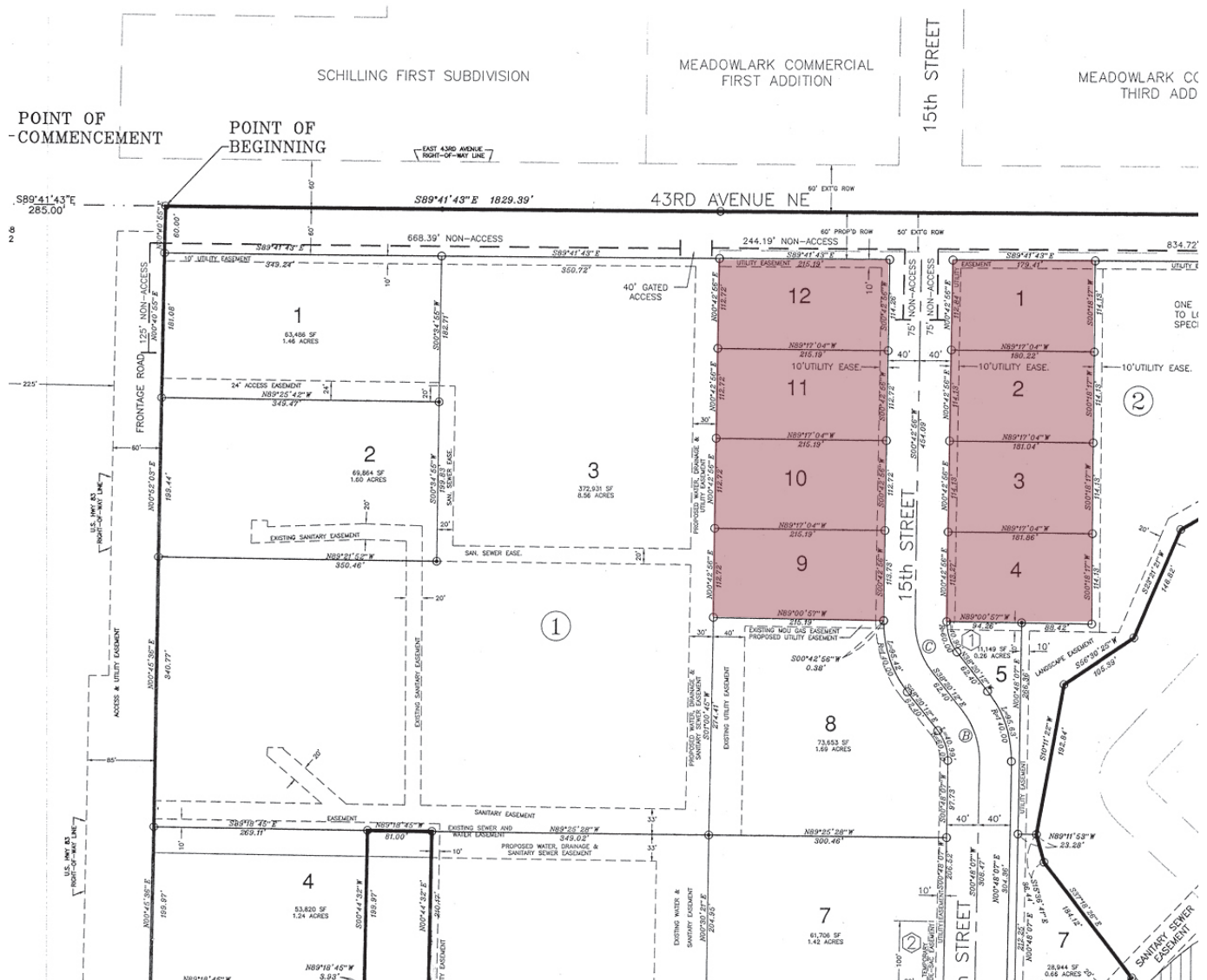
[matt@aspengrouprealestate.com](mailto:matt@aspengrouprealestate.com)



# PLAT MAP

AND LOT 21 BLOCK 1, NORTH VALLEY ESTATES, AND AN UNPLATTED PORTION  
OF THE NORTHWEST 1/4 OF SECTION 22, T139N-R80W OF THE FIFTH  
PRINCIPAL MERIDIAN

BURLEIGH COUNTY, NORTH DAKOTA



**Mathew Reichert**  
Broker | Partner | CCIM  
**701.223.2450**  
matt@aspengrouprealestate.com

## DINING | HOSPITALITY



## SHOPPING | RETAIL



## OFFICE | BANKING | MEDICAL



## COMMUNITY | RECREATION



**Mathew Reichert**  
Broker | Partner | CCIM  
**701.223.2450**  
matt@aspengroupprealstate.com



[WWW.ASPENGROUPPREALSTATE.COM](http://WWW.ASPENGROUPPREALSTATE.COM)



## NEIGHBORHOOD AERIAL



1. BISMARCK MOTOR CO.
2. FURNITURE ROW
3. TRACTOR SUPPLY
4. ALE WORKS
5. TIRES PLUS
6. SKYZONE
7. COSTCO
8. T-MOBILE  
ASPEN DENTAL

9. MATTRESS FIRM  
SLEEP NUMBER  
AT&T  
VERIZON  
PANCHEROS
10. ROSS DRESS FOR LESS  
MAURICES
11. KIRKLAND'S  
STAR NAILS
12. DOLLAR TREE  
PIZZA RANCH  
GOLF X
13. DICK'S SPORTING GOODS
14. MICHAEL'S CRAFTS  
ULTA BEAUTY

15. WALMART
16. AMERICA'S MATTRESS  
GAME STOP
17. STARION BANK
18. VUE CREDIT UNION
19. ONCE UPON A CHILD  
DUNN BROTHERS COFFEE
20. WINGATE BY WYNDHAM
21. SAZON
22. CHARRAS & TEQUILA
23. BUFFALO WINGS & RINGS



**Mathew Reichert**  
Broker | Partner | CCIM  
**701.223.2450**  
[matt@aspengroupprealstate.com](mailto:matt@aspengroupprealstate.com)