



LOT SIZE:

130.35 Acres (5,678,046 SF)

PRICE:

\$2.00 - \$3.00 PSF*

*Pricing dependent on location of land purchase

HIGHLIGHTS:

- Land Use: AG - Agriculture
- Willing to Subdivide
- Pricing is dependent on the location of the land purchase
- Located in North Dickinson along Highway 22 & busy truck route.



Steve Ilse

Director of Business Brokerage
Partner | Commercial Realtor®

701.223.2450

steve@aspengroupprealstate.com

424 S 3rd Street, Suite 2 | Bismarck, ND | WWW.ASPENGROUPPREALSTATE.COM

This information has been secured from sources we believe to be reliable, but we make no representation or warranties, expressed or implied, as to the accuracy of the information. All references to age, square footage, income and expenses are approximate. Buyers or lessors should conduct their own independent investigations and rely on those results.

PROPERTY DETAILS

PID#: 27-0000-05131-000

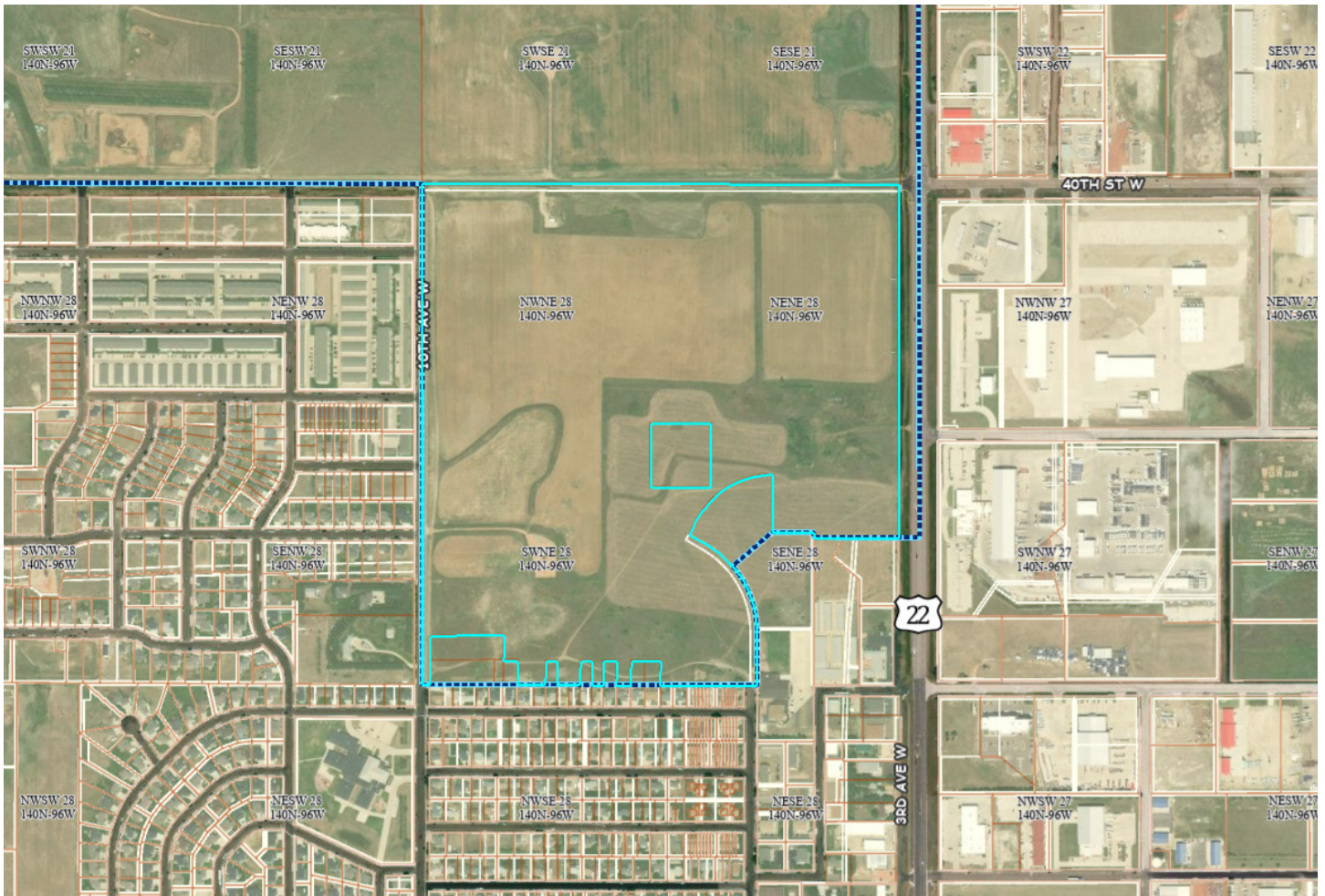
LEGAL DESCRIPTION: NE4 LESS TRACTS 28-140-96 130.35 ACRES

LOT SIZE: 130.35 Acres (5,678,046 SF)

LAND USE: AGRICULTURAL

2023 TAXES: \$772.24

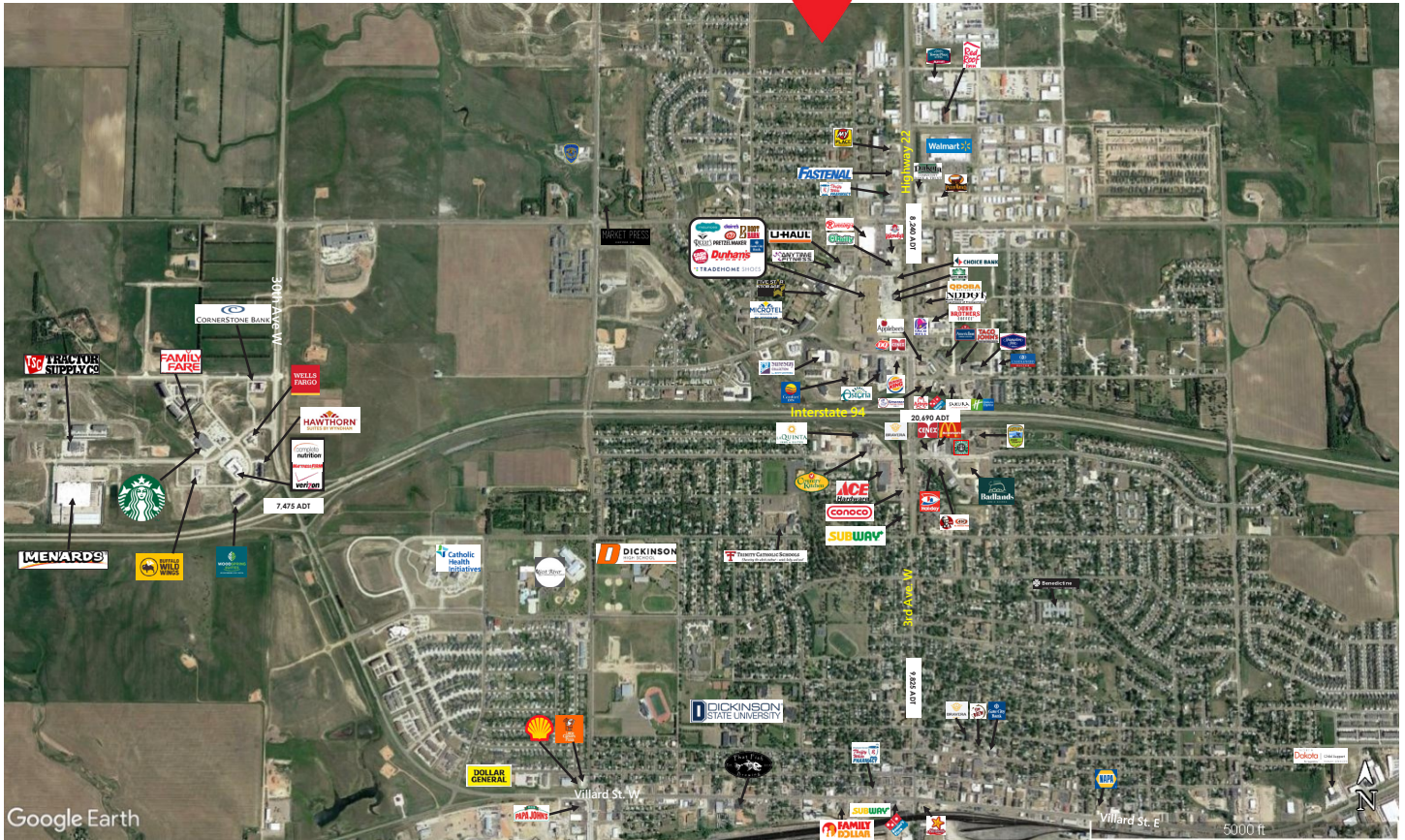
SPECIAL ASSESSMENTS: NONE AT THIS TIME



424 S 3rd Street, Suite 2 | Bismarck, ND | WWW.ASPENGROUPREALESTATE.COM

This information has been secured from sources we believe to be reliable, but we make no representation or warranties, expressed or implied, as to the accuracy of the information. All references to age, square footage, income and expenses are approximate. Buyers or lessors should conduct their own independent investigations and rely on those results.

LOCATION MAP



424 S 3rd Street, Suite 2 | Bismarck, ND | WWW.ASPENGROUPREALESTATE.COM

This information has been secured from sources we believe to be reliable, but we make no representation or warranties, expressed or implied, as to the accuracy of the information. All references to age, square footage, income and expenses are approximate. Buyers or lessors should conduct their own independent investigations and rely on those results.