



SPACE AVAILABLE:

BUILDING SIZE: 9,202 SF

LOT SIZE: 19,440 SF

PRICE:

\$950,000.00

HIGHLIGHTS:

- Former Bar, Grill & Brewery
- Heated Garages with Bathrooms
- (3) 10' Overhead Doors
- Open Basement
- Off Street Parking
- Great Downtown Location



Mike Ilse

Broker Associate | Partner
Commercial Realtor®

701.223.2450

mike@aspengroupprealstate.com

424 S 3rd Street, Suite 2 | Bismarck, ND | WWW.ASPENGROUPPREALSTATE.COM

This information has been secured from sources we believe to be reliable, but we make no representation or warranties, expressed or implied, as to the accuracy of the information. All references to age, square footage, income and expenses are approximate. Buyers or lessors should conduct their own independent investigations and rely on those results.

PROPERTY DETAILS

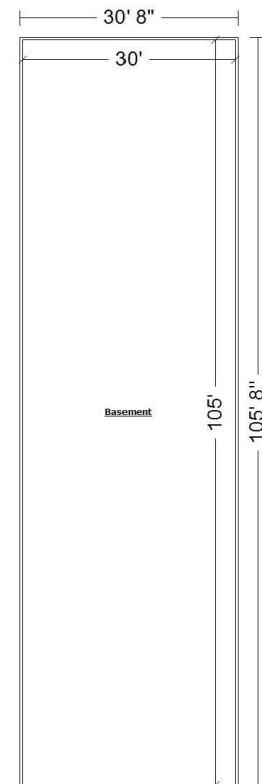
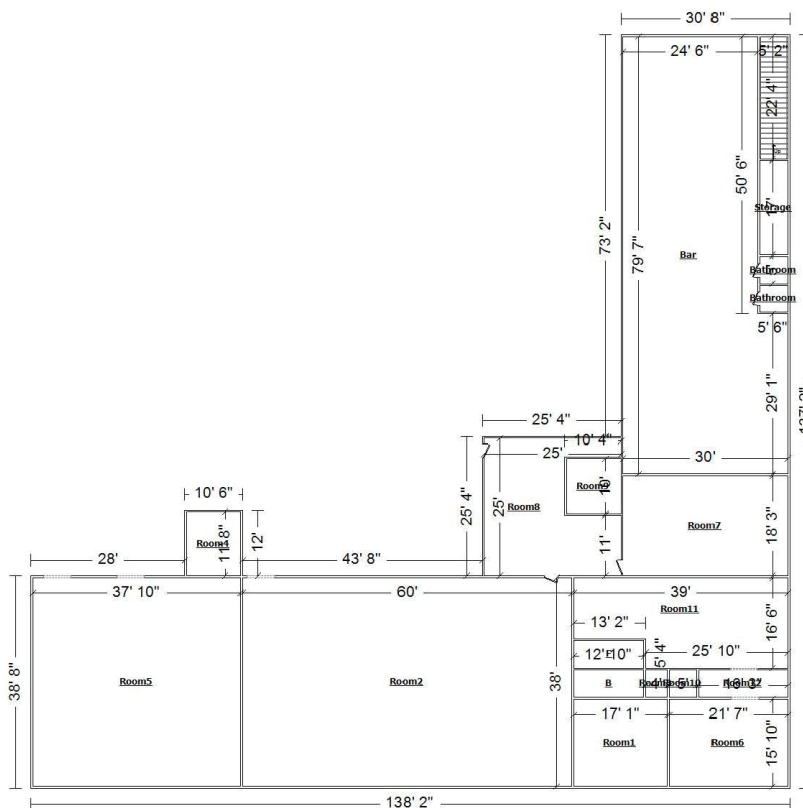
PID#: MI24.313.020.0171

Legal Description: RAMSTADS SECOND ADDITION NORTH 35' OF LOT 15 & ALL OF LOTS 16 & 17 LESS EAST 6.4' BLOCK 2

Zoning: M2 - Heavy Industrial

2022 Taxes: \$10,477.22

Special Assessments: None at this time



Mike Ilse

Broker Associate | Partner
Commercial Realtor®

701.223.2450

mike@aspengroupprealstate.com

BUILDING PHOTOS



Mike Ilse

Broker Associate | Partner
Commercial Realtor®

701.223.2450

mike@aspengroupprealstate.com

LOCATION MAP



Mike Ilse

Broker Associate | Partner
Commercial Realtor®

701.223.2450

mike@aspengroupprealstate.com