



FOR LEASE
OFFICE SPACE IN CENTRAL BISMARCK
311 N MANDAN ST, SUITE 1 | BISMARCK, ND



SPACE AVAILABLE:

MAIN LEVEL | 1,795 SF
LOWER LEVEL | 300 SF

PRICE:

\$1,950 / MONTH

HIGHLIGHTS:

- 7 Private Offices
- Kitchenette
- Private Restroom
- Reception Area
- Open Work Area
- Off Street Parking
- Landlord pays real estate taxes, special assessments, property insurance, and water.
- Tenant pays electric & gas



Mike Ilse

Broker Associate | Partner
Commercial Realtor®

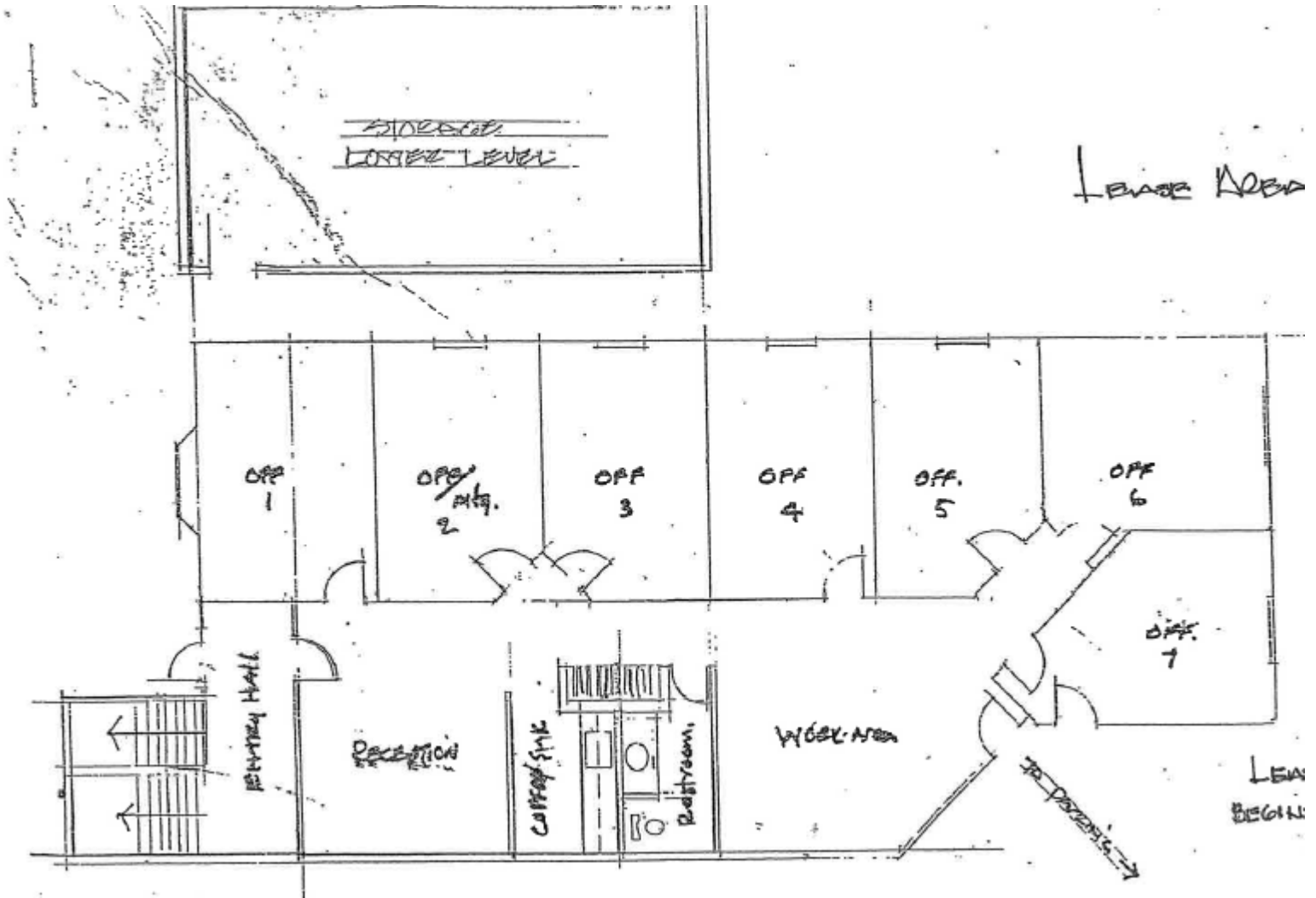
701.223.2450

mike@aspengroupprealstate.com

424 S 3rd Street, Suite 2 | Bismarck, ND | WWW.ASPENGROUPPREALESTATE.COM

This information has been secured from sources we believe to be reliable, but we make no representation or warranties, expressed or implied, as to the accuracy of the information. All references to age, square footage, income and expenses are approximate. Buyers or lessors should conduct their own independent investigations and rely on those results.

FLOOR PLAN



Mike Ilse

Broker Associate | Partner
Commercial Realtor®

701.223.2450

mike@aspengrouprealestate.com

PHOTOS



Mike Ilse
Broker Associate | Partner
Commercial Realtor®
701.223.2450
mike@aspengroupprealestate.com

LOCATION MAP



Mike Ilse

Broker Associate | Partner
Commercial Realtor®

701.223.2450

mike@aspengrouprealestate.com