



SPACE AVAILABLE:

SECOND FLOOR | 4,441 - 10,258 SF

PRICE:

\$15.50 PSF - FULL SERVICE

HIGHLIGHTS:

- Highly visible office space just off I-94 Exit 152
- 5,817 SF * 4,441 SF Available
- 2nd Floor Space with Elevator Access
- Open Floorplan Vanilla Shell
- Abundance of Natural Light
- Access to Common Conference Room by Reservation
- Common Area Restrooms



Steve Ilse

Director of Business Brokerage
Partner | Commercial Realtor®

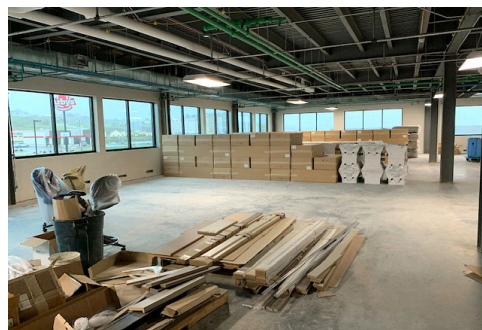
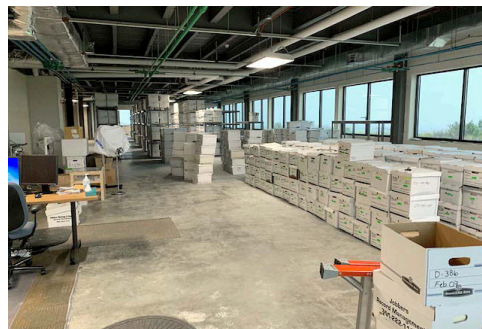
701.223.2450

steve@aspengroupprealstate.com

424 S 3rd Street, Suite 2 | Bismarck, ND | WWW.ASPENGROUPPREALSTATE.COM

This information has been secured from sources we believe to be reliable, but we make no representation or warranties, expressed or implied, as to the accuracy of the information. All references to age, square footage, income and expenses are approximate. Buyers or lessors should conduct their own independent investigations and rely on those results.

PROPERTY PHOTOS



Steve Ilse

Director of Business Brokerage
Partner | Commercial Realtor®

701.223.2450

steve@aspengroupprealestate.com

IN THE AREA

DINING & HOSPITALITY



**FRIED'S FAMILY
RESTAURANT**



SHOPPING & RETAIL



OFFICE, BANKING & MEDICAL



COMMUNITY & RECREATION



LOCATION MAP

