



SPACE AVAILABLE:

SUITE 1 & 2 | 2,932 SF

PRICE:

\$2,500/MONTH + UTILITIES

HIGHLIGHTS:

- Suite has 1st & 2nd Level
- Large Open Area
- 2 Private Offices with Windows
- Break Room/Storage
- 1 Private Restroom
- Garage/Shop with restroom, floor drain, heater and 14' x 14' overhead door
- East of 26th Street, just off Broadway Ave



Mike Ilse

Broker Associate | Partner
Commercial Realtor®

701.223.2450

mike@aspengrouprealestate.com

424 S 3rd Street, Suite 2 | Bismarck, ND | WWW.ASPENGROUPREALESTATE.COM

This information has been secured from sources we believe to be reliable, but we make no representation or warranties, expressed or implied, as to the accuracy of the information. All references to age, square footage, income and expenses are approximate. Buyers or lessors should conduct their own independent investigations and rely on those results.

PROPERTY PHOTOS



Mike Ilse

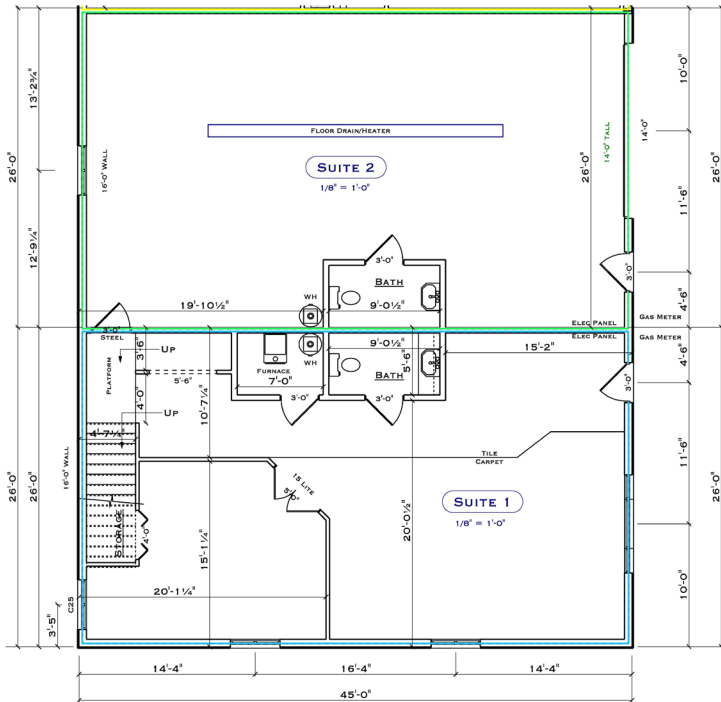
Broker Associate | Partner
Commercial Realtor®

701.223.2450

mike@aspengrouprealestate.com

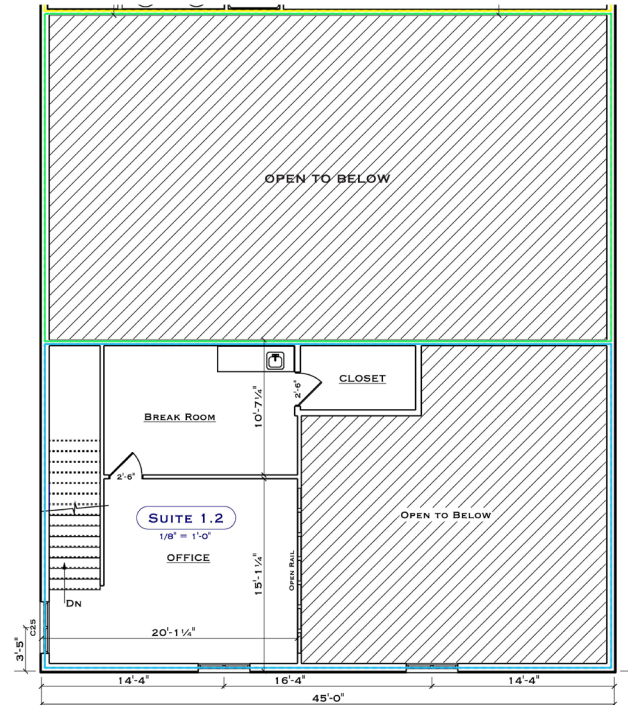
FLOORPLANS

▲ SUITE 5 ▲



1ST LEVEL

▲ SUITE 5 ▲



2ND LEVEL



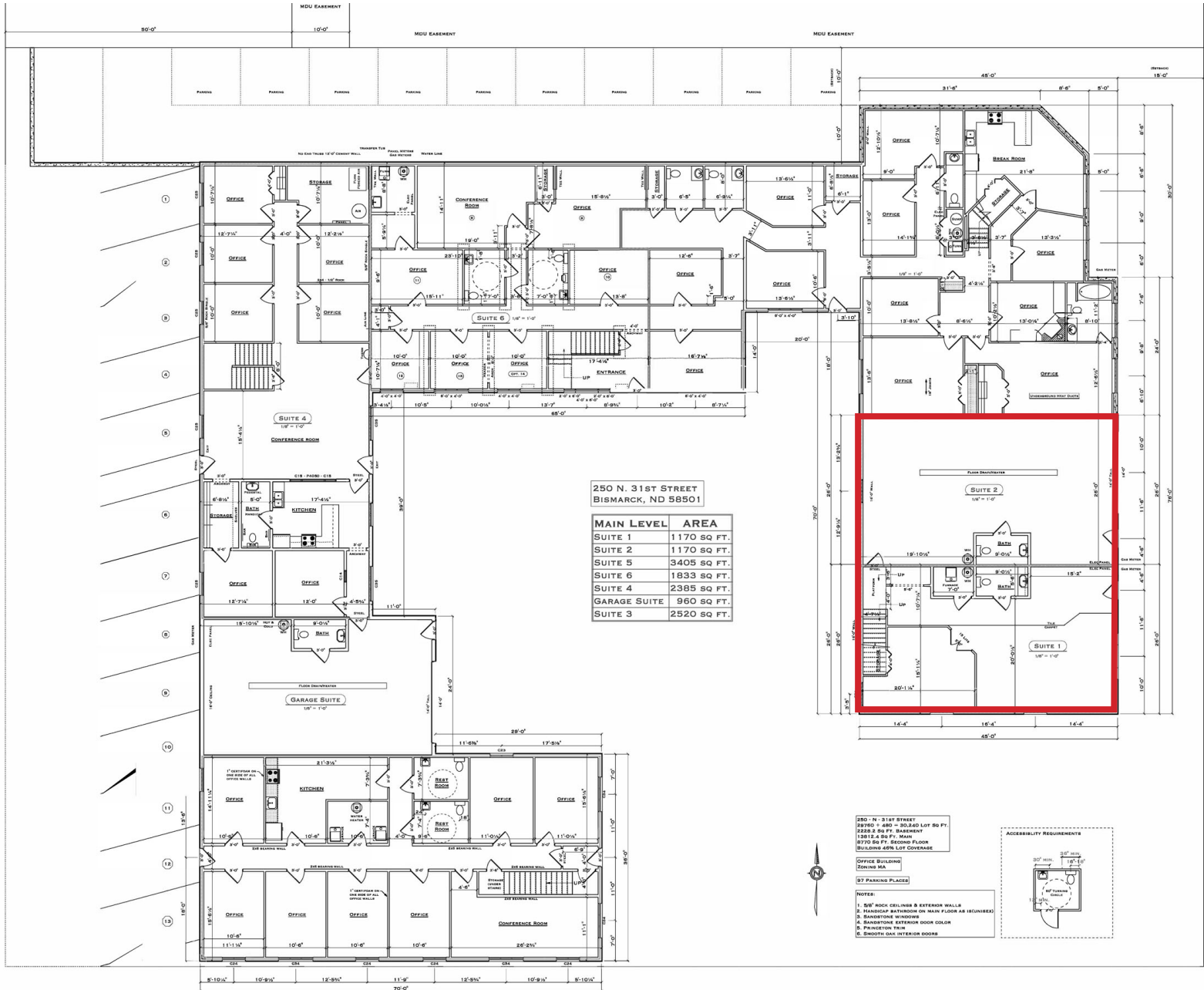
Mike Ilse

Broker Associate | Partner
Commercial Realtor®

701.223.2450

mike@aspengrouprealestate.com

BUILDING PLAN - 1ST LEVEL



Mike Ilse

Broker Associate | Partner
Commercial Realtor®

701.223.2450

mike@aspengrouprealestate.com



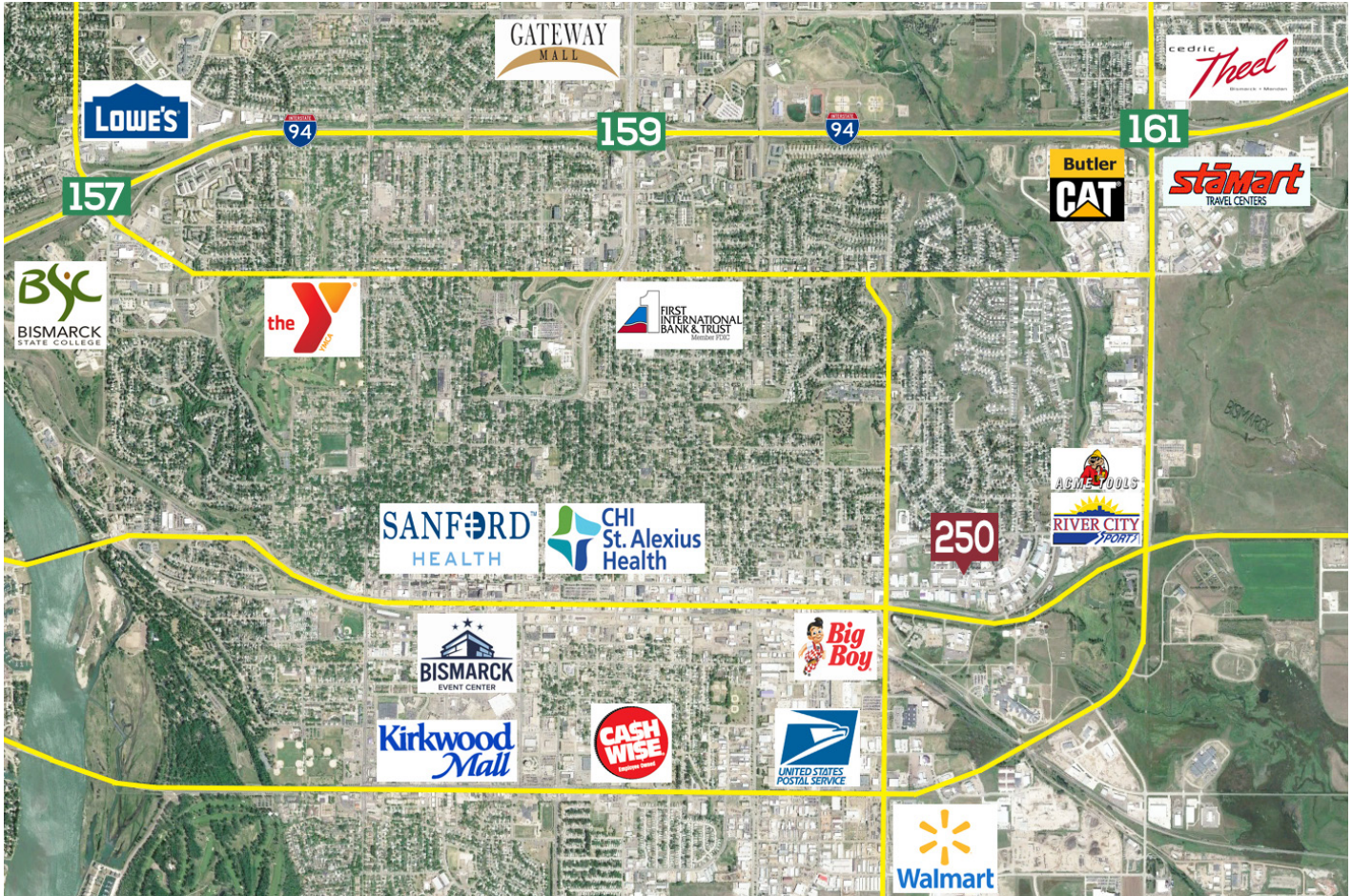
WWW.ASPENGROUPREALESTATE.COM

BUILDING PLAN - 2ND LEVEL



Mike Ilse
 Broker Associate | Partner
 Commercial Realtor®
701.223.2450
mike@aspengrouprealestate.com

LOCATION MAP



Mike Ilse

Broker Associate | Partner
Commercial Realtor®

701.223.2450

mike@aspengrouprealestate.com