



SPACE AVAILABLE:

50,502 SF

PRICE:

\$15.50 PSF

HIGHLIGHTS:

- Zoning: C-2 General Commercial
- Located near Marketplace Foods, Dollar General, CHI St Alexis Health, First International Bank & Trust, Hyatt House, Shell gas station, Autozone, Dollar Tree, Subway, Pet Supplies Plus, Caribou Coffee, and numerous apartment developments



Mike Ilse

Broker Associate | Partner
Commercial Realtor®

701.223.2450

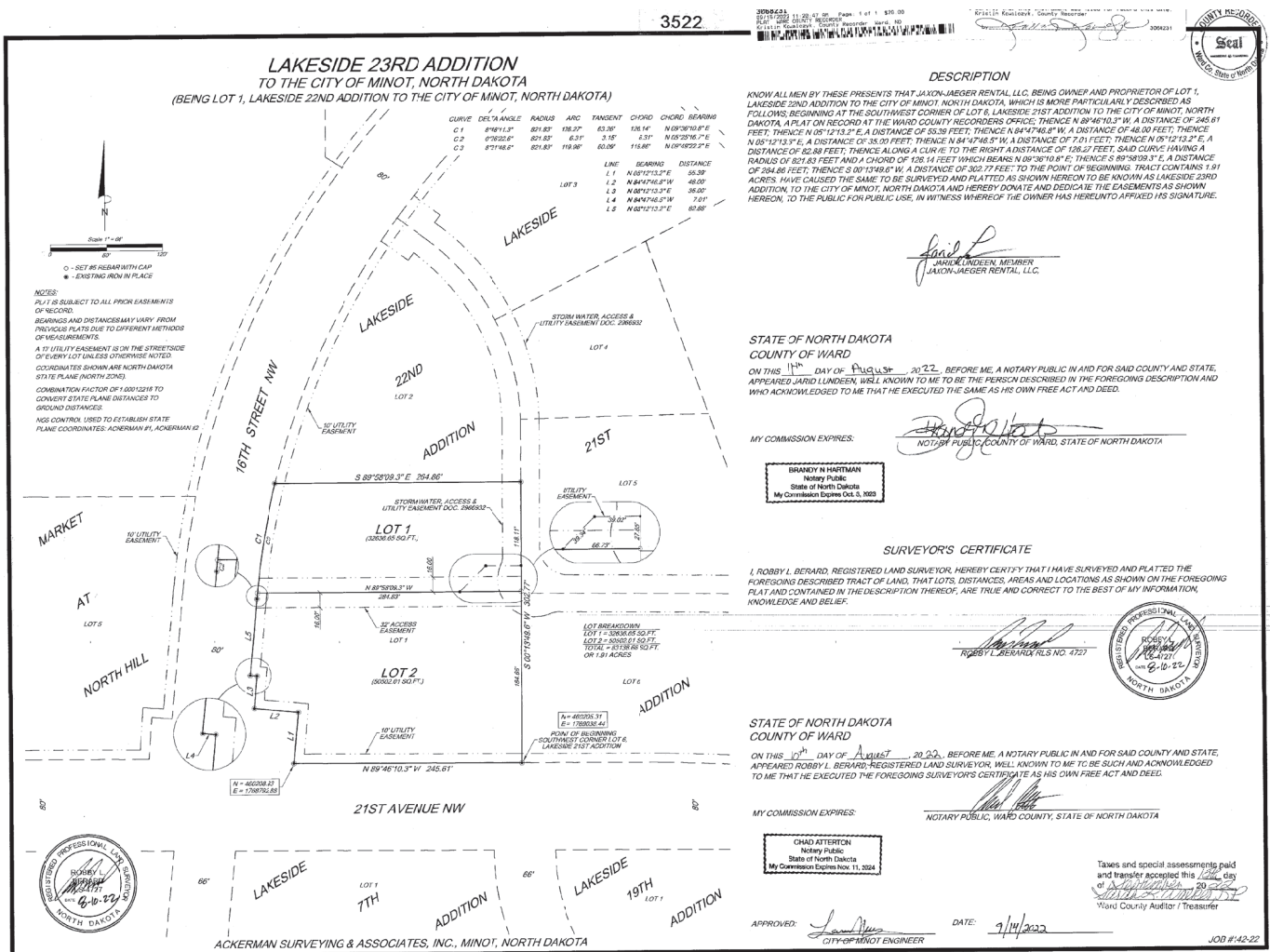
mike@aspengrouprealestate.com

424 S 3rd Street, Suite 2 | Bismarck, ND | WWW.ASPENGROUPREALESTATE.COM

This information has been secured from sources we believe to be reliable, but we make no representation or warranties, expressed or implied, as to the accuracy of the information. All references to age, square footage, income and expenses are approximate. Buyers or lessors should conduct their own independent investigations and rely on those results.

PROPERTY DETAILS

Parcel ID: MI10.F88.000.0020
Legal Description: LAKESIDE 23RD ADDITION LOT 2
Lot Size: 1.16 Acres (50,502 SF)
2023 Taxes: \$10,518.04
Special Assessments: None at this time



Mike Ilse
 Broker Associate | Partner
 Commercial Realtor®
701.223.2450
 mike@aspengrouprealestate.com



TRAFFIC COUNTS



21ST AVE NW - 5,775 Average Daily Travel

16TH ST NW - 4,655 Average Daily Travel



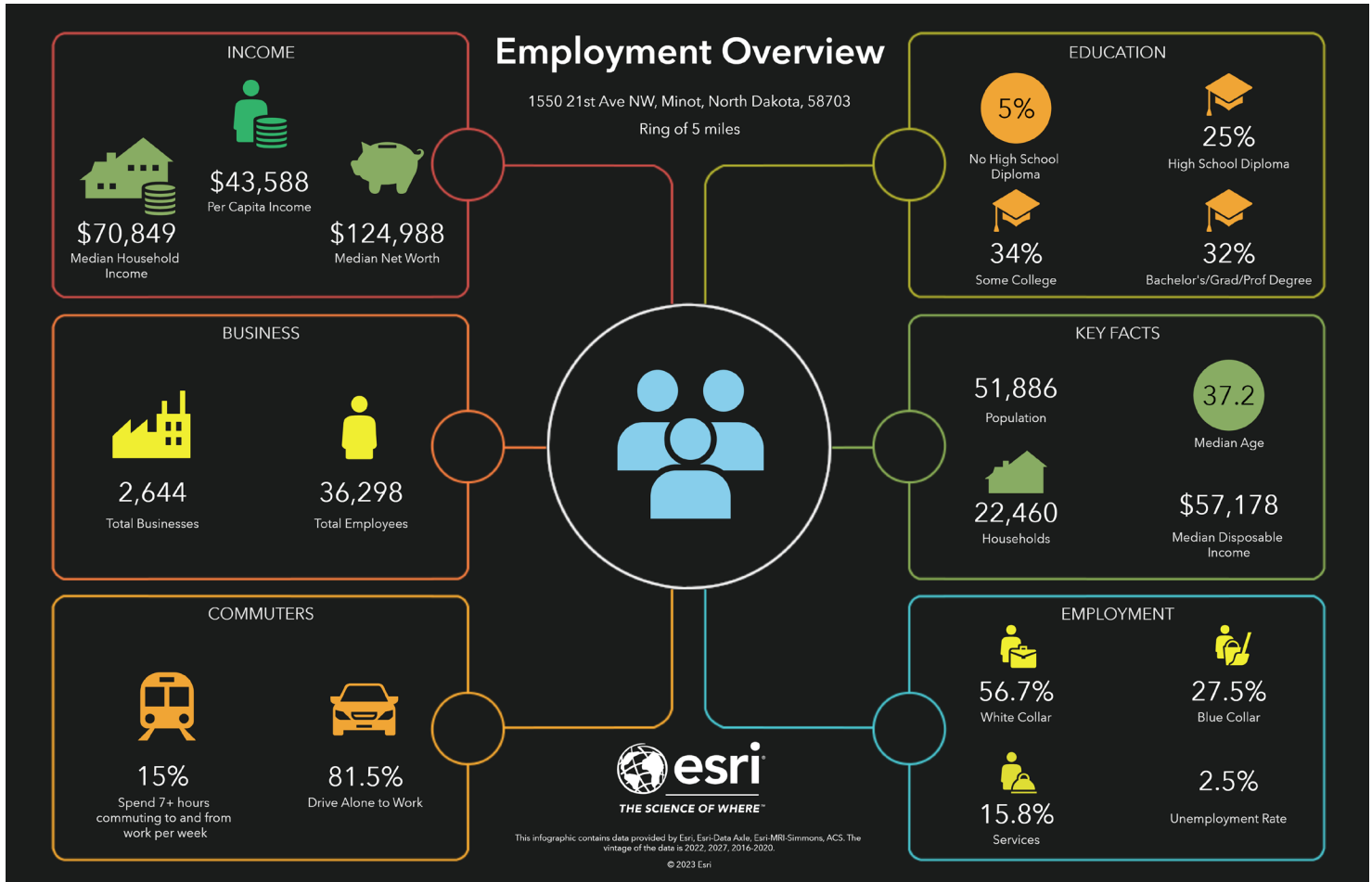
Mike Ilse

Broker Associate | Partner
Commercial Realtor[®]

701.223.2450

mike@aspengrouprealestate.com

DEMOGRAPHICS - 5 MILES



Mike Ilse
 Broker Associate | Partner
 Commercial Realtor®
701.223.2450
 mike@aspengrouprealestate.com

LOCATION MAP



Mike Ilse

Broker Associate | Partner
Commercial Realtor®

701.223.2450

mike@aspengrouprealestate.com