



SPACE AVAILABLE:
MOVE-IN READY | 10,833 SF

PRICE:
\$19.00 PSF FULL SERVICE

HIGHLIGHTS:

- Exclusive use of 3rd floor
- Private Offices
- Windows Throughout
- Large Board Room
- Private Restrooms
- Elevator access directly to 3rd floor suite
- Filing Room
- Storage facilities available on main floor
- Private Parking
- Great NW Location
- Move In Ready!



Scott Ritter

**Broker Associate | Partner
Commercial Realtor®**

701.223.2450

scott@aspengrouprealestate.com

424 S 3rd Street, Suite 2 | Bismarck, ND | WWW.ASPENGROUPREALESTATE.COM

This information has been secured from sources we believe to be reliable, but we make no representation or warranties, expressed or implied, as to the accuracy of the information. All references to age, square footage, income and expenses are approximate. Buyers or lessors should conduct their own independent investigations and rely on those results.

PROPERTY PHOTOS



Scott Ritter

Broker Associate | Partner
Commercial Realtor®

701.223.2450

scott@aspengrouprealestate.com

PROPERTY PHOTOS



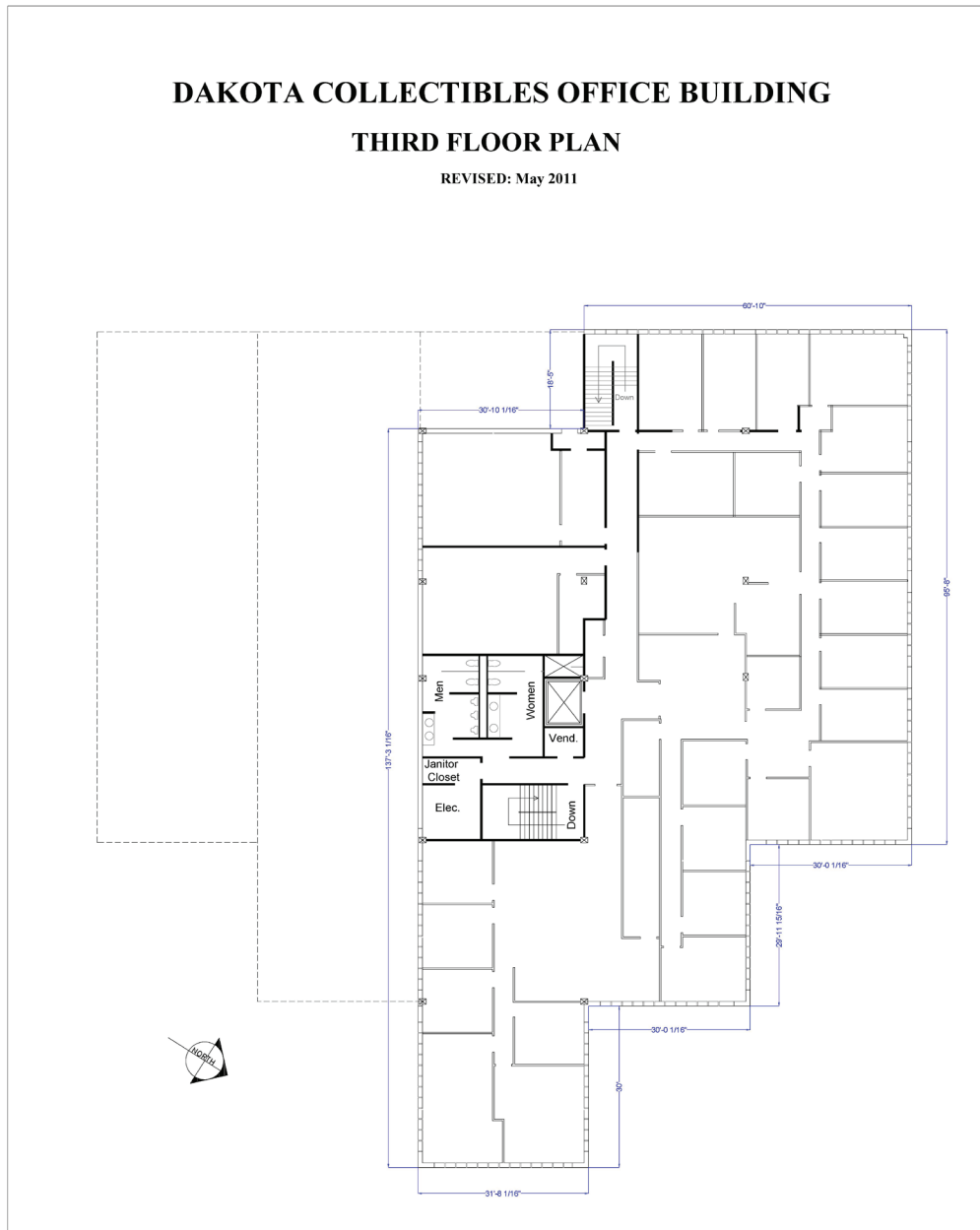
Scott Ritter

Broker Associate | Partner
Commercial Realtor®

701.223.2450

scott@aspengroupprealstate.com

FLOOR PLAN



Scott Ritter

Broker Associate | Partner
Commercial Realtor®

701.223.2450

scott@aspengrouprealestate.com

LOCATION MAP



Scott Ritter

Broker Associate | Partner
Commercial Realtor®

701.223.2450

scott@aspengrouprealestate.com