



SPACE AVAILABLE:

5,799 SF

PRICE:

\$15.00 PSF Gross Rent



Mathew Reichert

Broker | Partner | CCIM

701.223.2450

matt@aspengroupprealestate.com



Charles Reichert

Commercial Realtor®

701.223.2450

charles@aspengroupprealestate.com

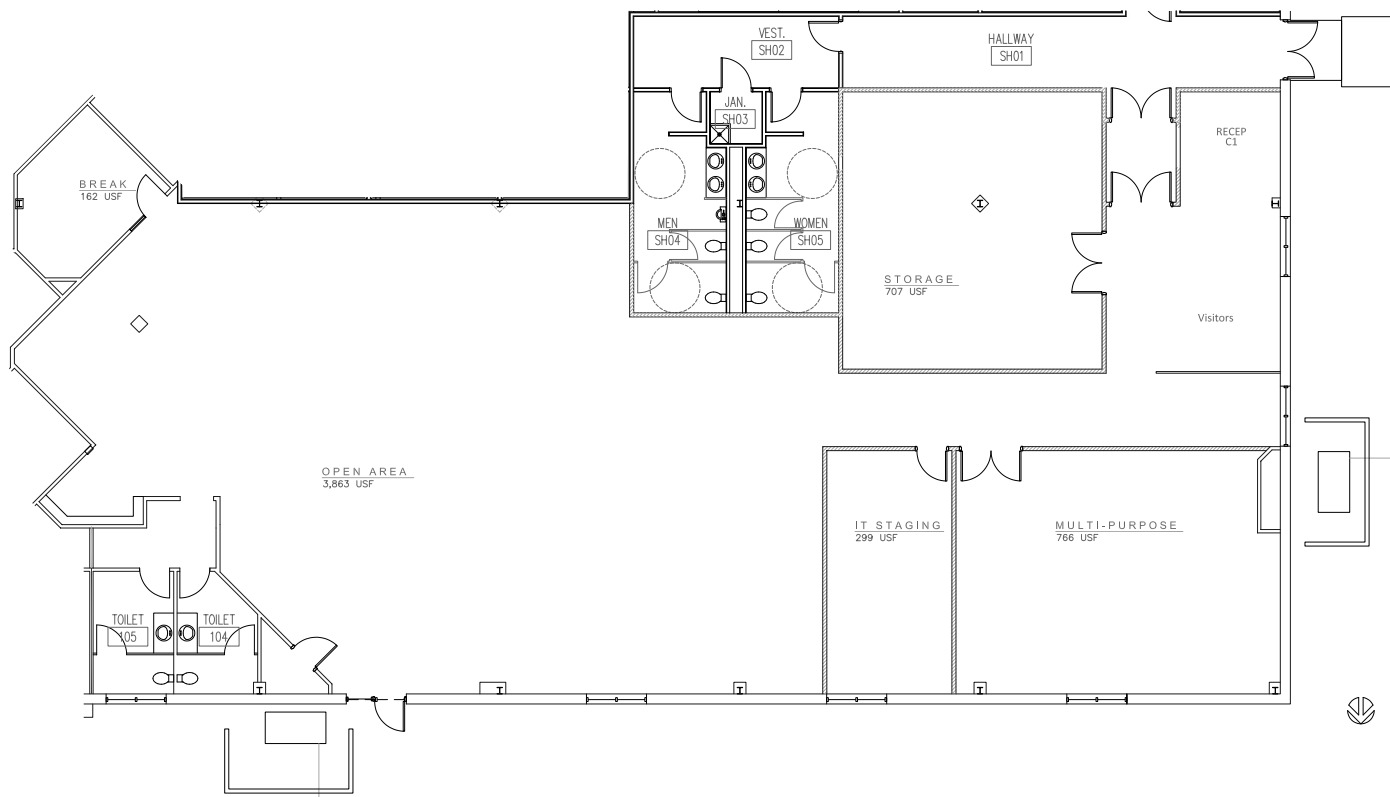
HIGHLIGHTS:

- Open Floor Plan with many different layout possibilities
- Reception Area with walk up window
- IT Room
- Supply Closet
- Conference Room's
- Large, Paved Parking Lot
- Training / Conference Room wired for video conferencing
- ADA compliant women's & men's restrooms
- LED Lighting throughout Open Floor Plan
- Gas forced air heating units with central air
- Electric - 400 amp/3 phase
- In-ground lawn sprinkler system

424 S 3rd Street, Suite 2 | Bismarck, ND | WWW.ASPENGROUPPREALESTATE.COM

This information has been secured from sources we believe to be reliable, but we make no representation or warranties, expressed or implied, as to the accuracy of the information. All references to age, square footage, income and expenses are approximate. Buyers or lessors should conduct their own independent investigations and rely on those results.

FLOOR PLAN LAYOUT



1 FLOOR PLAN-LAYOUT
A1.2 3/16" = 1'-0"

EXTERIOR PROPERTY PHOTOS



424 S 3rd Street, Suite 2 | Bismarck, ND | WWW.ASPENGROUPREALESTATE.COM

This information has been secured from sources we believe to be reliable, but we make no representation or warranties, expressed or implied, as to the accuracy of the information. All references to age, square footage, income and expenses are approximate. Buyers or lessors should conduct their own independent investigations and rely on those results.

INTERIOR PROPERTY PHOTOS



424 S 3rd Street, Suite 2 | Bismarck, ND | WWW.ASPENGROUPREALESTATE.COM

This information has been secured from sources we believe to be reliable, but we make no representation or warranties, expressed or implied, as to the accuracy of the information. All references to age, square footage, income and expenses are approximate. Buyers or lessors should conduct their own independent investigations and rely on those results.

INTERIOR PROPERTY PHOTOS



LOCATION MAP



424 S 3rd Street, Suite 2 | Bismarck, ND | WWW.ASPENGROUPREALESTATE.COM

This information has been secured from sources we believe to be reliable, but we make no representation or warranties, expressed or implied, as to the accuracy of the information. All references to age, square footage, income and expenses are approximate. Buyers or lessors should conduct their own independent investigations and rely on those results.