



**SPACE AVAILABLE:**  
SUITE 102 | 456 SF

**PRICE:**  
\$625.00/month - Full Service

**HIGHLIGHTS:**

- Reception Area
- Private Office/Open Work Area
- Common Area Restrooms
- Handicap Accessible
- Sign on exterior monument directory provided at no extra charge
- Tenant responsible for interior janitorial
- 3 Year Minimum
- All Utilities Paid minus phone/Internet. Heat, lights, water, common area & external maintenance. Lawn Care & Snow removal included.



**Mike Ilse**

Broker | Partner  
Commercial Realtor®

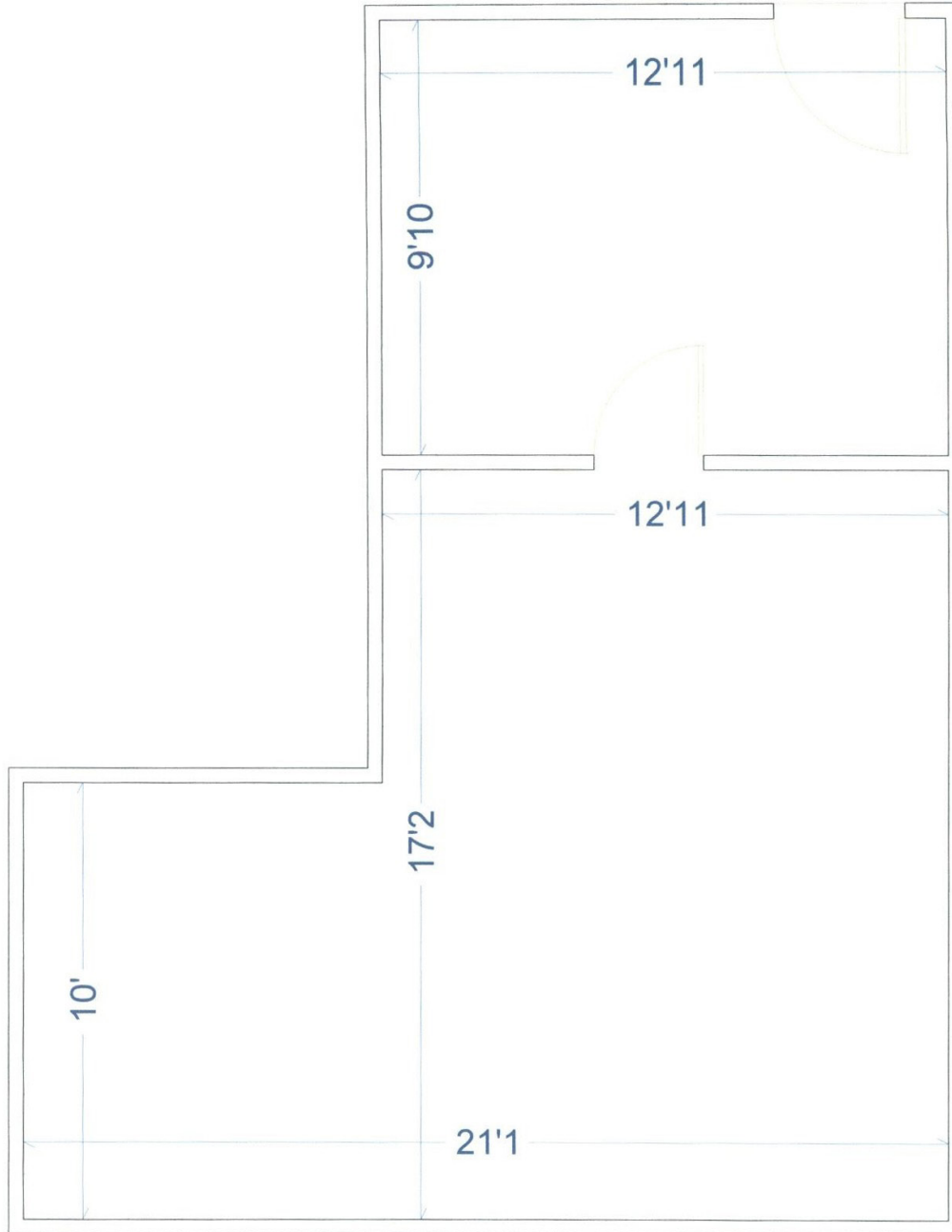
**701.223.2450**

[mike@aspengrouprealestate.com](mailto:mike@aspengrouprealestate.com)

**424 S 3rd Street, Suite 2 | Bismarck, ND | [WWW.ASPENGROUPPREALESTATE.COM](http://WWW.ASPENGROUPPREALESTATE.COM)**

This information has been secured from sources we believe to be reliable, but we make no representation or warranties, expressed or implied, as to the accuracy of the information. All references to age, square footage, income and expenses are approximate. Buyers or lessors should conduct their own independent investigations and rely on those results.

# FLOOR PLAN



**424 S 3rd Street, Suite 2 | Bismarck, ND | [WWW.ASPENGROUPREALESTATE.COM](http://WWW.ASPENGROUPREALESTATE.COM)**

This information has been secured from sources we believe to be reliable, but we make no representation or warranties, expressed or implied, as to the accuracy of the information. All references to age, square footage, income and expenses are approximate. Buyers or lessors should conduct their own independent investigations and rely on those results.

## PHOTOS



**424 S 3rd Street, Suite 2 | Bismarck, ND | [WWW.ASPENGROUPREALESTATE.COM](http://WWW.ASPENGROUPREALESTATE.COM)**

This information has been secured from sources we believe to be reliable, but we make no representation or warranties, expressed or implied, as to the accuracy of the information. All references to age, square footage, income and expenses are approximate. Buyers or lessors should conduct their own independent investigations and rely on those results.

# LOCATION MAP



**424 S 3rd Street, Suite 2 | Bismarck, ND | [WWW.ASPENGROUPREALESTATE.COM](http://WWW.ASPENGROUPREALESTATE.COM)**

This information has been secured from sources we believe to be reliable, but we make no representation or warranties, expressed or implied, as to the accuracy of the information. All references to age, square footage, income and expenses are approximate. Buyers or lessors should conduct their own independent investigations and rely on those results.