



SPACE AVAILABLE:

375 SF - 5,390 SF SUITES

PRICE:

\$15.50 PSF - Full Service

HIGHLIGHTS:

- Highly visible office space on Main Avenue!
- Various Suites Delivered as Vanilla Shell with Open Floor Plan
- Various Suites Built-Out with Private Offices & Work Stations
- Common Area Restrooms
- Elevator Access | ADA Accessible Building
- Ample On-Site Parking



Charles Reichert

Partner | Commercial Realtor®

701.223.2450

charles@aspengroupprealstate.com

424 S 3rd Street, Suite 2 | Bismarck, ND | WWW.ASPENGROUPPREALSTATE.COM

This information has been secured from sources we believe to be reliable, but we make no representation or warranties, expressed or implied, as to the accuracy of the information. All references to age, square footage, income and expenses are approximate. Buyers or lessors should conduct their own independent investigations and rely on those results.

FIRST FLOOR - 375 SF AVAILABLE



424 S 3rd Street, Suite 2 | Bismarck, ND | WWW.ASPENGROUPREALESTATE.COM

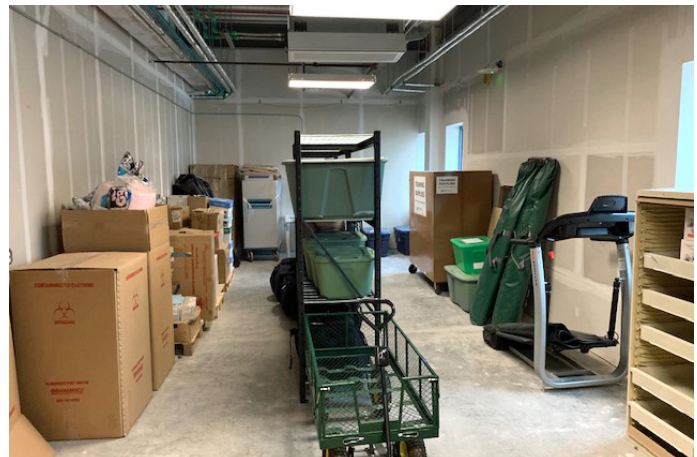
This information has been secured from sources we believe to be reliable, but we make no representation or warranties, expressed or implied, as to the accuracy of the information. All references to age, square footage, income and expenses are approximate. Buyers or lessors should conduct their own independent investigations and rely on those results.



This information has been secured from sources we believe to be reliable, but we make no representation or warranties, expressed or implied, as to the accuracy of the information. All references to age, square footage, income and expenses are approximate. Buyers or lessors should conduct their own independent investigations and rely on those results.



This information has been secured from sources we believe to be reliable, but we make no representation or warranties, expressed or implied, as to the accuracy of the information. All references to age, square footage, income and expenses are approximate. Buyers or lessors should conduct their own independent investigations and rely on those results.



This information has been secured from sources we believe to be reliable, but we make no representation or warranties, expressed or implied, as to the accuracy of the information. All references to age, square footage, income and expenses are approximate. Buyers or lessors should conduct their own independent investigations and rely on those results.

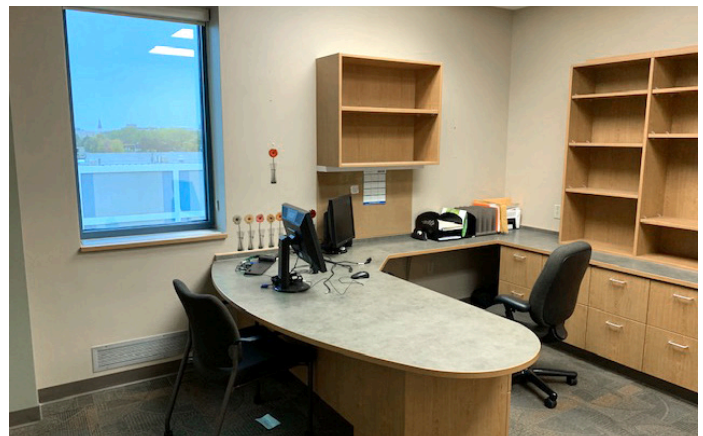


This information has been secured from sources we believe to be reliable, but we make no representation or warranties, expressed or implied, as to the accuracy of the information. All references to age, square footage, income and expenses are approximate. Buyers or lessors should conduct their own independent investigations and rely on those results.



This detailed floor plan of the 10th floor of the FBI Laboratory includes the following rooms and areas:

- Top Section:** STAIR B (3205), HC STORAGE (3203), SMALL CONFERENCE (3242), OFFICE (3245), OFFICE (3247), OFFICE (3248), OFFICE (3244), OFFICE (3243), OFFICE (3242), STAIR A (3241).
- Left Section:** OFFICE (3255), CONFERENCE (3255), BREAK ROOM (3257), HALL (3252), OFFICE (3231), OFFICE (3232), OFFICE (3235), OFFICE (3238), OFFICE (3227), TERRY OFFICE (3226), OFFICE (3224), STEVE OFFICE (3221), OFFICE (3220), SUSAN OFFICE (3217), JANEL OFFICE (3216).
- Central Section:** HALL (3258), COATS (3252), WORK ROOM (3259), FISCAL OPEN OFFICES (3230), AP (3230), VAULT (3232), RECH. SUITE, SUPPLIES (3234), HALL (3246).
- Right Section:** SMALL CONFERENCE (3240), CONFERENCE (3236), DATA (3237), ELECTRICAL (3236), FUTURE ELEV., HALL (3235), HALL (3247), CONFERENCE (3211), OFFICE (3209), MED. AUDITORS (3208), OFFICE (3200), STORAGE (3207), WORK AREA (3204), HALL (3202), HALL (3201), OPEN OFFICE (3201), RECEIV. (3203), SUPERVISOR OFFICE (3200), STAIR A (3200).
- Bottom Section:** MEN (3213), WOMEN (3214), VOLUNTARY AND INBUREAU SUPERVISOR (3213), RPS CODING AND REMOUNTING (3213), HALL (3206), HALL (3201), STAIR A (3200).



This information has been secured from sources we believe to be reliable, but we make no representation or warranties, expressed or implied, as to the accuracy of the information. All references to age, square footage, income and expenses are approximate. Buyers or lessors should conduct their own independent investigations and rely on those results.



A large, empty industrial warehouse interior. On the left side, there is a long wall of shelving units. Each unit consists of a metal frame with multiple rows of small, colorful bags (red, blue, yellow, and green) hanging from it. The bags are organized in a systematic manner. The floor is a smooth, light-colored concrete. The ceiling is high and features several large, rectangular fluorescent light fixtures. In the background, there are large windows and a set of stairs leading up to a platform. The overall atmosphere is clean and organized.



This information has been secured from sources we believe to be reliable, but we make no representation or warranties, expressed or implied, as to the accuracy of the information. All references to age, square footage, income and expenses are approximate. Buyers or lessors should conduct their own independent investigations and rely on those results.



This information has been secured from sources we believe to be reliable, but we make no representation or warranties, expressed or implied, as to the accuracy of the information. All references to age, square footage, income and expenses are approximate. Buyers or lessors should conduct their own independent investigations and rely on those results.

IN THE AREA

FOOD & DRINK

Amina Cucina
Bistro 1100
Blarney Stone Pub
Borrowed Bucks Roadhouse
Brick Oven Bakery
Broadway Grill & Tavern
Burger Time
Butterhorn
Coffee Break
Craftcade
Dairy Queen
Elbow Room
Fireflour Pizzeria
Gideon's Brewing Company
Jimmy V's
JL Beers
India Clay Oven
LUFT
McDonalds
NoodleZip
Nutrition Ambition
Peacock Alley
Pirogue Grille
Roundhouse
Gastro Pub
Toasted Frog

COMMUNITY/RECREATION

Belle Mehus Auditorium
Bismarck Municipal Ball Park
Bismarck Art & Galleries Assn
Bismarck Event Center
Bismarck Veterans Memorial Public
Library
The Capital Gallery
Custer Park
Dakota Stage Ltd.
Elks Aquatic Center
Peace Park
World War Memorial Building

SHOPPING/RETAIL

Blink Eyewear
Boutique 23
Bridal N' More
Brides on a Dime
Crabapple Floral
Dakota Nuts-N-Candy
Ferguson Books & More Fleck's
Furniture & Appliance
Halberstadt's ND
J & R Vacuum & Sewing
Kokkeler's Jewelry
lula b. boutique
Modern Eyes
Red Wing Shoes
Seeds of Hope Thrift Store
Spaces
Stella's
Terry's Health Products
Walker's n' Daughters Jewelers
Westley's Jewelry
Zimmerman's Furniture

BANKING/FINANCIAL

American Bank Center
Ameriprise Financial
BNC National Bank
Capital Credit Union
Choice Bank
Country Financial
First Western Bank & Trust
Gate City Bank
Kirkwood Bank & Trust
Starion Bank
US Bank
Vue Community Credit Union Wells
Fargo

HEALTH/MEDICAL

Active Life Chiropractic
Bismarck-Burleigh Public Health
CHI St. Alexius Hospital
CHI St. Alexius Urgent Care
Dakota Eye Institute
Dakota Pharmacy
Mid Dakota Clinic
Prairie Rose Family Dentists
Proximal50
Sanford Health
Smiles By Design
UND Center for Family Medicine

PROFESSIONAL SERVICES

Alchemist Tattoo
The Barber's Wife
Black Sheep Tattoo
Broadway Centre Spa & Salon
Derma Care Clinic
Glance Salon & Spa
Hi Honey Salon
Pure Skin Aesthetic & Laser Center
Rejuvenation Place

LOCATION MAP



424 S 3rd Street, Suite 2 | Bismarck, ND | WWW.ASPENGROUPREALESTATE.COM

This information has been secured from sources we believe to be reliable, but we make no representation or warranties, expressed or implied, as to the accuracy of the information. All references to age, square footage, income and expenses are approximate. Buyers or lessors should conduct their own independent investigations and rely on those results.