



PRICE IMPROVEMENT

SPACE AVAILABLE:

Building Size: 12,960 SF

Lot Size: 27,400 SF

PRICE:

\$719,000.00

HIGHLIGHTS:

- Two loading docks
- Cold Storage
- Great Location
- Wonderful opportunity near Downtown Bismarck
- Zoning: MA - Light Industrial



PROPERTY DETAILS

PID#: 0115-004-500

Property Address: 1202 E Front Ave, Bismarck ND

Zoning: MA - Light Industrial

Lot Size: 27,400 SF

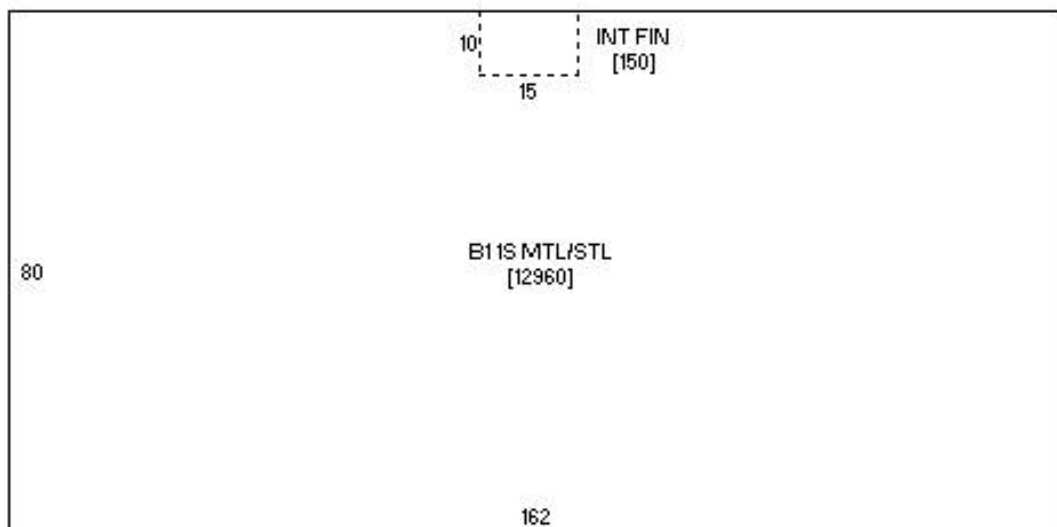
Building Size: 12,960 SF

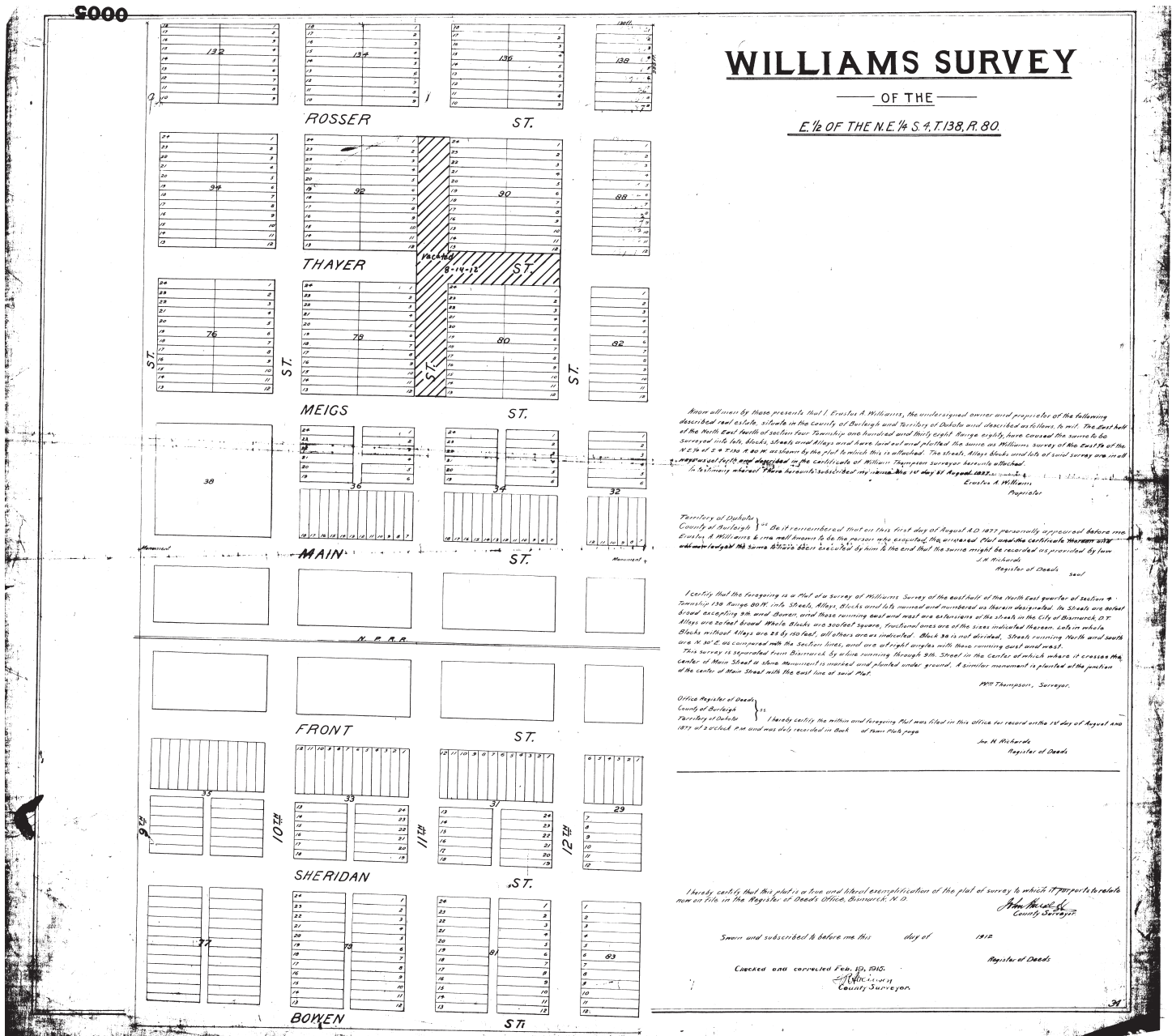
Year Built: 1966

2023 Taxes: \$5,288.71

Special Assessments: None at this time

0115-004-500 1202 E FRONT AVE





424 S 3rd Street, Suite 2 | Bismarck, ND | WWW.ASPENGROUPPREALESTATE.COM

This information has been secured from sources we believe to be reliable, but we make no representation or warranties, expressed or implied, as to the accuracy of the information. All references to age, square footage, income and expenses are approximate. Buyers or lessors should conduct their own independent investigations and rely on those results.

PROPERTY PHOTOS



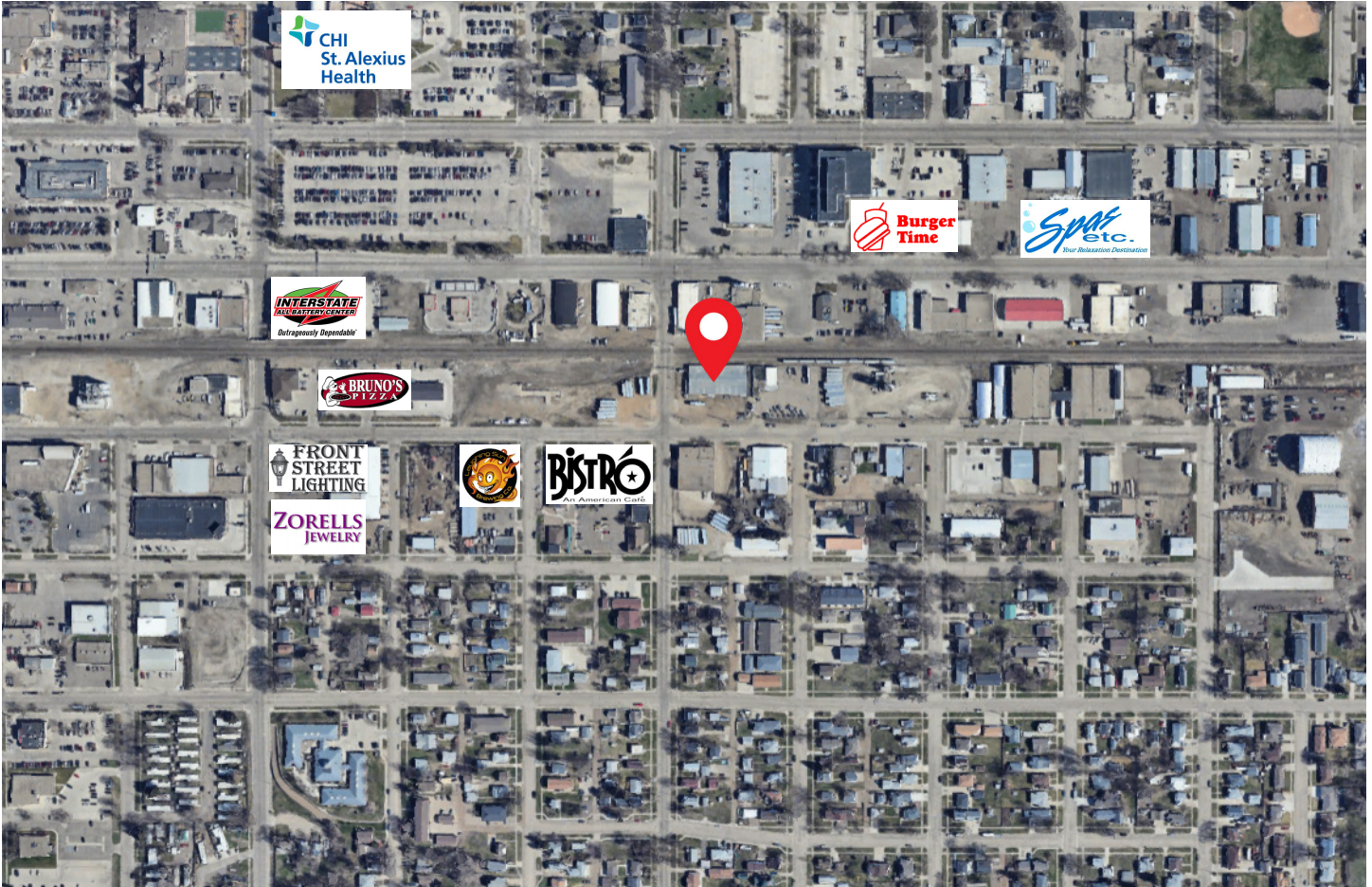
424 S 3rd Street, Suite 2 | Bismarck, ND | WWW.ASPENGROUPREALESTATE.COM

This information has been secured from sources we believe to be reliable, but we make no representation or warranties, expressed or implied, as to the accuracy of the information. All references to age, square footage, income and expenses are approximate. Buyers or lessors should conduct their own independent investigations and rely on those results.

PROPERTY PHOTOS



LOCATION MAP



424 S 3rd Street, Suite 2 | Bismarck, ND | WWW.ASPENGROUPREALESTATE.COM

This information has been secured from sources we believe to be reliable, but we make no representation or warranties, expressed or implied, as to the accuracy of the information. All references to age, square footage, income and expenses are approximate. Buyers or lessors should conduct their own independent investigations and rely on those results.