



SPACE AVAILABLE:

BUILDING SIZE: 7,416 SF
LOT SIZE: 27,094 SF (0.62 ACRES)

PRICE:

\$875,000

HIGHLIGHTS:

- Radiant Heat
- Platform Loading Dock
- Showroom
- 2 Bathrooms
- 2 Offices
- IT Room
- Mop Sink
- Floor Drain



Mike Ilse

Broker | Partner
Commercial Realtor®

701.223.2450

mike@aspengrouprealestate.com



Maddi Dymerski

Commercial Realtor®
Marketing Specialist

701.223.2450

maddi@aspengrouprealestate.com

424 S 3rd Street, Suite 2 | Bismarck, ND | WWW.ASPENGROUPREALESTATE.COM

This information has been secured from sources we believe to be reliable, but we make no representation or warranties, expressed or implied, as to the accuracy of the information. All references to age, square footage, income and expenses are approximate. Buyers or lessors should conduct their own independent investigations and rely on those results.

PROPERTY INFORMATION

1202 AIRPORT ROAD, BISMARCK ND

PID#: 0255-018-010

LEGAL DESCRIPTION: SUTTLE'S Block: 18 AUDITORS LOT 1202 BEING A PART OF L 1-4 B17 & LOT 29-32 B18 & VAC 19TH ST ADJ SUTTLES ADDITION

BUILDING SIZE: 7,416 SF

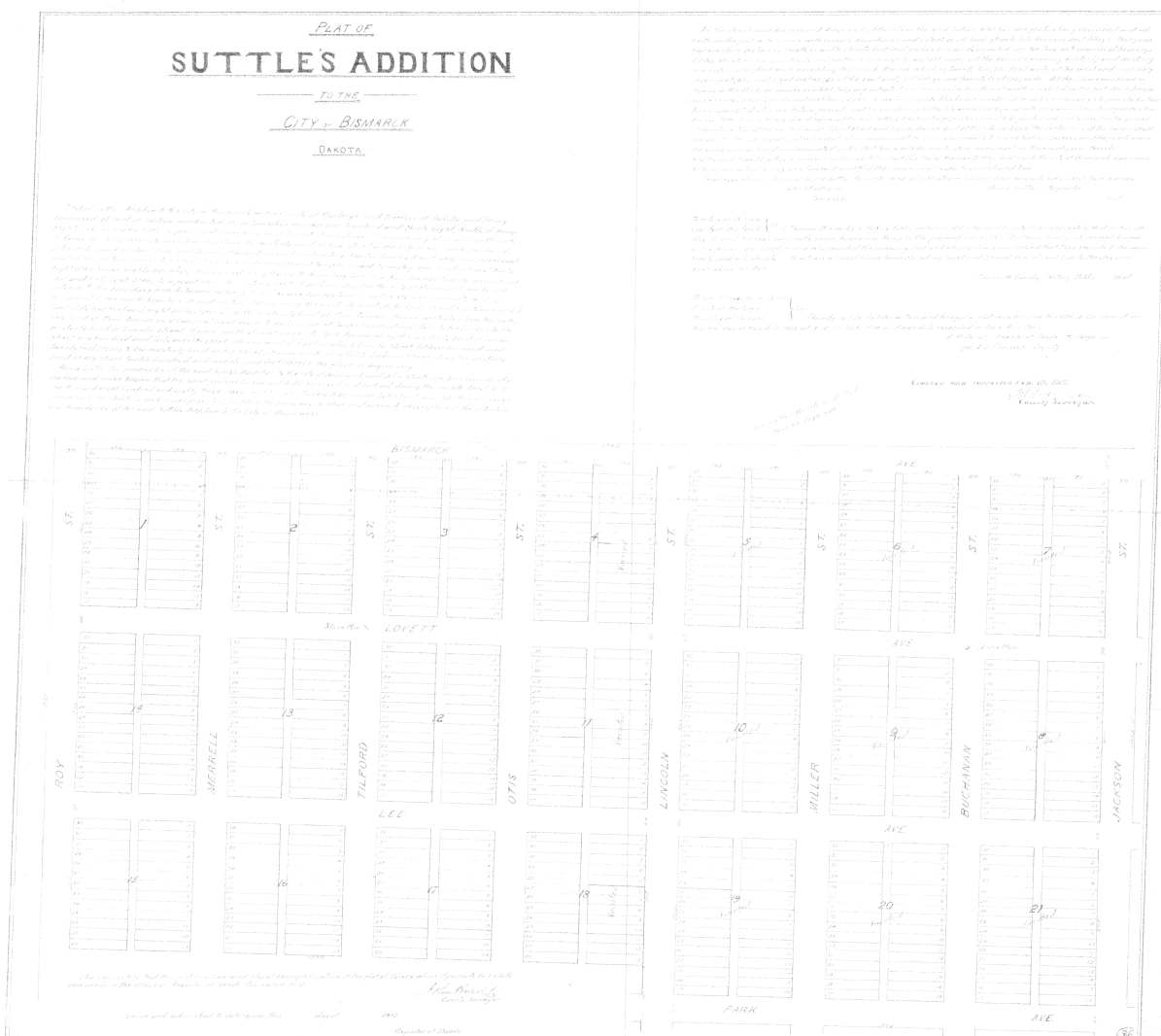
LOT SIZE: 27,094 SF (0.62 Acres)

ZONING: MA - Light Industrial

YEAR BUILT: 1984

2024 TAXES: \$9,749.37

SPECIAL ASSESSMENTS: \$772.17 Installment; \$4,477.00 Remaining Balance



424 S 3rd Street, Suite 2 | Bismarck, ND | WWW.ASPENGROUPREALESTATE.COM

This information has been secured from sources we believe to be reliable, but we make no representation or warranties, expressed or implied, as to the accuracy of the information. All references to age, square footage, income and expenses are approximate. Buyers or lessors should conduct their own independent investigations and rely on those results.

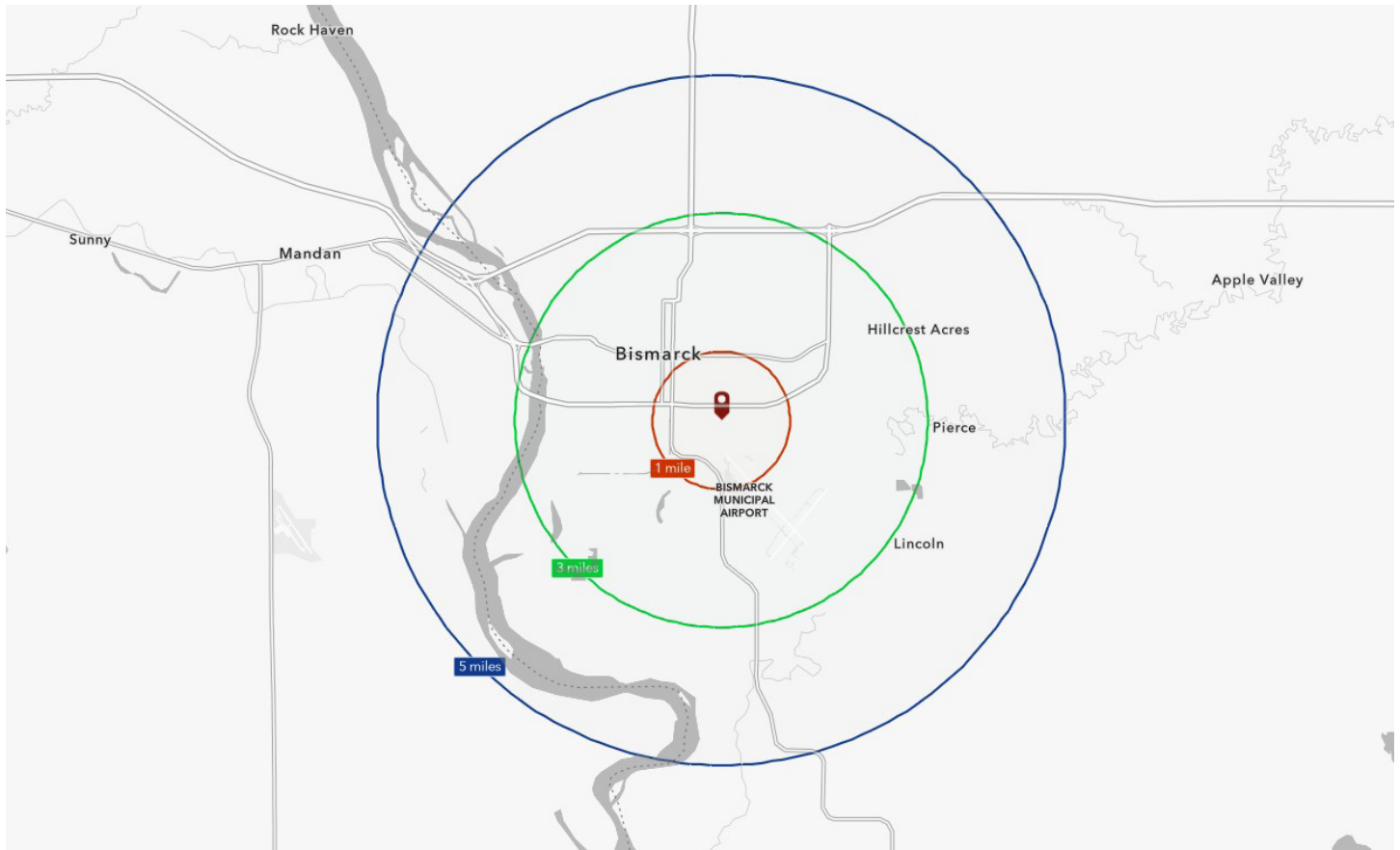
EXTERIOR PICTURES



424 S 3rd Street, Suite 2 | Bismarck, ND | WWW.ASPENGROUPREALESTATE.COM

This information has been secured from sources we believe to be reliable, but we make no representation or warranties, expressed or implied, as to the accuracy of the information. All references to age, square footage, income and expenses are approximate. Buyers or lessors should conduct their own independent investigations and rely on those results.

DEMOGRAPHICS

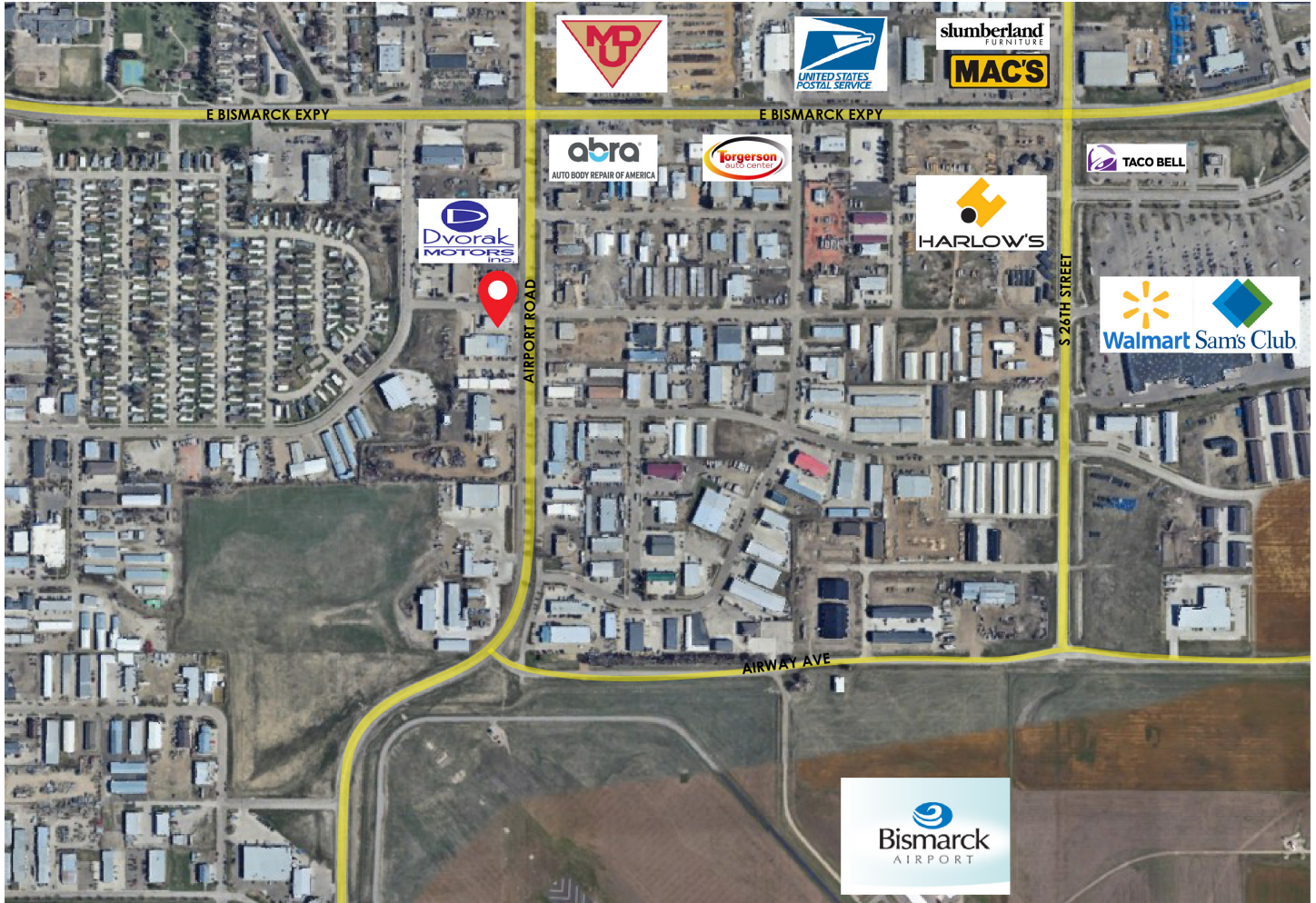


Population	1 Mile	3 Miles	5 Miles
2025 Total Population	5,351	46,012	91,070
2025 Total Households	2,462	20,310	37,641
Median Age	36.9	38.4	38.3
2025 Median Home Value	\$151,429	\$300,162	\$342,550
2025 Median Household Income	\$64,089	\$75,348	\$86,918

424 S 3rd Street, Suite 2 | Bismarck, ND | WWW.ASPENGROUPREALESTATE.COM

This information has been secured from sources we believe to be reliable, but we make no representation or warranties, expressed or implied, as to the accuracy of the information. All references to age, square footage, income and expenses are approximate. Buyers or lessors should conduct their own independent investigations and rely on those results.

LOCATION MAP



424 S 3rd Street, Suite 2 | Bismarck, ND | WWW.ASPENGROUPREALESTATE.COM

This information has been secured from sources we believe to be reliable, but we make no representation or warranties, expressed or implied, as to the accuracy of the information. All references to age, square footage, income and expenses are approximate. Buyers or lessors should conduct their own independent investigations and rely on those results.