



LOT SIZE:

4 LOTS | 26.63 TOTAL ACRES

PRICE:

\$3.25 - \$3.50 PSF

HIGHLIGHTS:

- ZONING: GI & LI
- Adjacent to ND Hwy 22



FOR SALE

NORTH DICKINSON INDUSTRIAL LOTS

11082 32E STREET SW | DICKINSON, ND

PROPERTY DETAILS

11082 32E St SW | DICKINSON, ND

Parcel ID: 27-5120-02000-700

Legal Description: GREAT LAKES 1ST SUB L7 B2 15-140-96 5.38 ACRES

Lot Size: 5.38 Acres | 234,353 SF

Zoning: GI—General Industrial

2023 Taxes: \$1,670.46

Special Assessments: None at this time

Price: \$3.50 PSF | \$820,235.50

11090 32E St SW | DICKINSON, ND

Parcel ID: 27-5120-02000-800

Legal Description: GREAT LAKES 1ST SUB L8 B2 15-140-96 5.18 ACRES

Lot Size: 5.18 Acres | 225,641 SF

Zoning: LI—Limited Industrial

2023 Taxes: \$1,630.59

Special Assessments: None at this time

Price: \$3.50 PSF | \$789,743.50

3230 HWY 22 | DICKINSON, ND

Parcel ID: 27-5120-02000-900

Legal Description: GREAT LAKES 1ST SUB L9 B2 15-140-96 6.47 ACRES

Lot Size: 6.47 Acres | 281,833 SF

Zoning: LI—Limited Industrial

2023 Taxes: \$1,353.51

Special Assessments: None at this time.

Price: \$3.50 PSF | \$986,415.50

ADDRESS TBD | DICKINSON, ND

Parcel ID: 27-5120-02001-000

Legal Description: GREAT LAKES 1ST SUB L10 B2 15-140-96 9.6 ACRES

Lot Size: 9.60 Acres | 418,176 SF

Zoning: LI—Limited Industrial

2023 Taxes: \$1,687.03

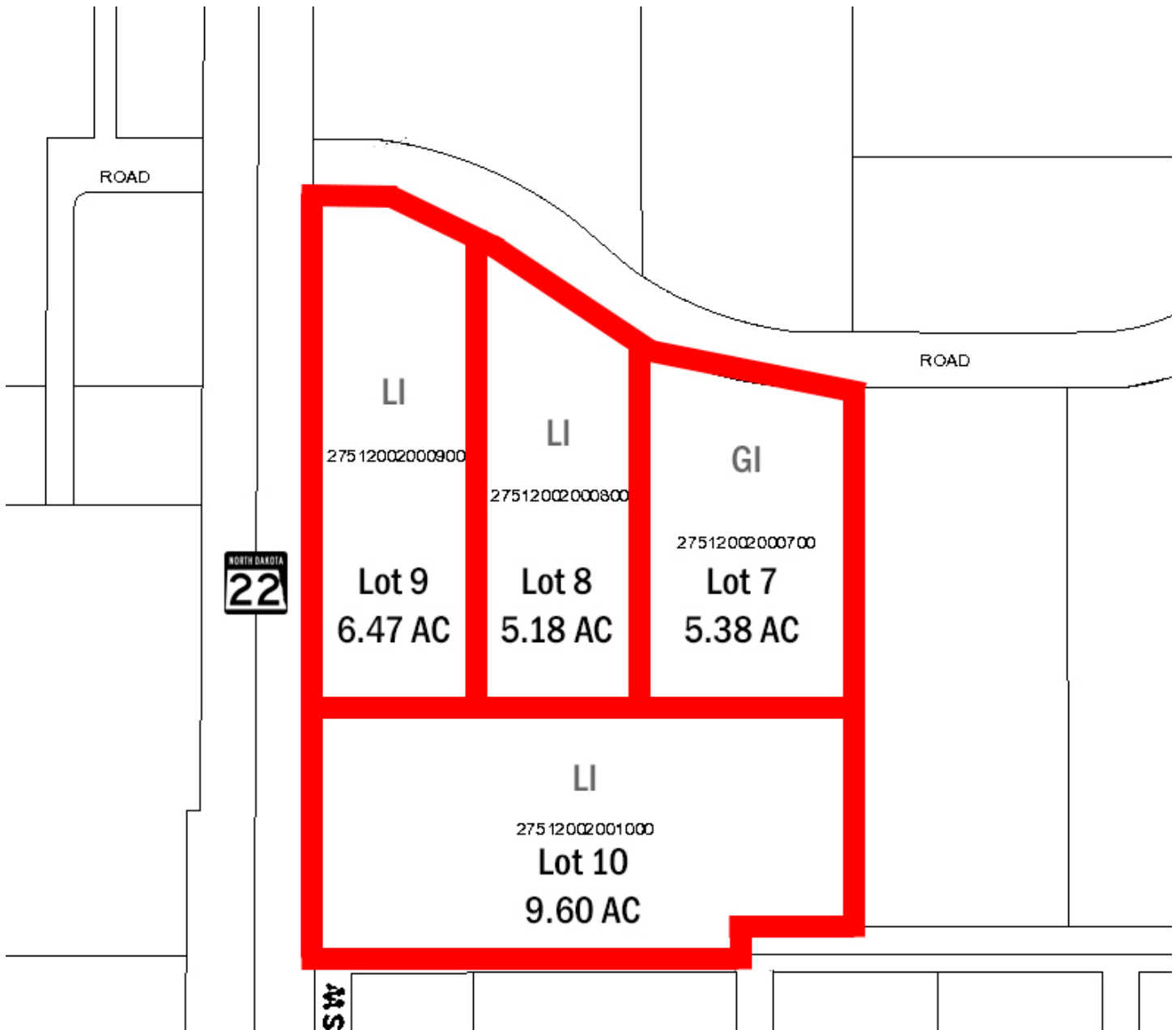
Special Assessments: None at this time.

Price: \$3.25 PSF | \$1,359,072.00

424 S 3rd Street, Suite 2 | Bismarck, ND | WWW.ASPENGROUPREALESTATE.COM

This information has been secured from sources we believe to be reliable, but we make no representation or warranties, expressed or implied, as to the accuracy of the information. All references to age, square footage, income and expenses are approximate. Buyers or lessors should conduct their own independent investigations and rely on those results.

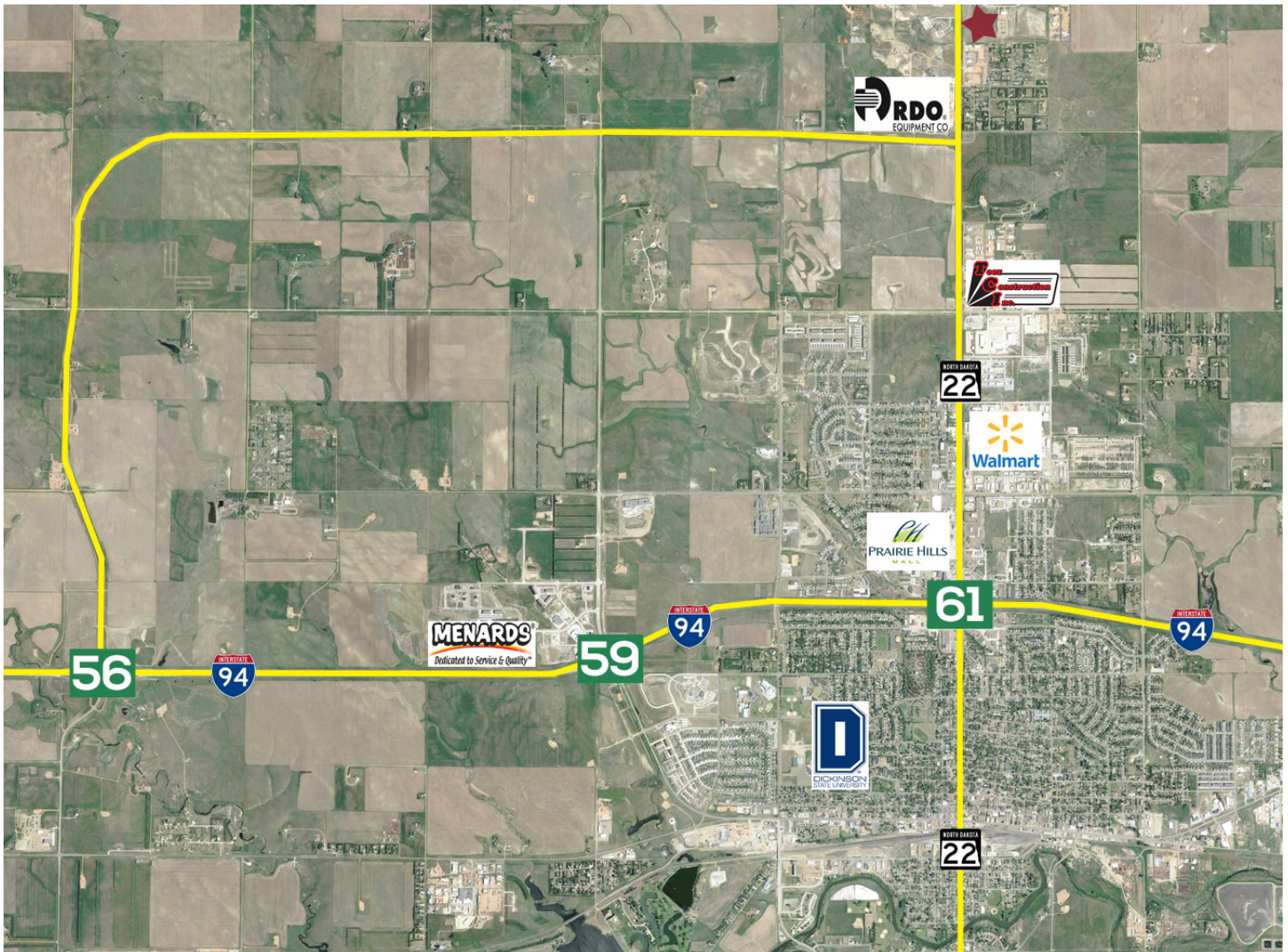
PROPERTY DETAILS



424 S 3rd Street, Suite 2 | Bismarck, ND | WWW.ASPENGROUPREALESTATE.COM

This information has been secured from sources we believe to be reliable, but we make no representation or warranties, expressed or implied, as to the accuracy of the information. All references to age, square footage, income and expenses are approximate. Buyers or lessors should conduct their own independent investigations and rely on those results.

LOCATION MAP



424 S 3rd Street, Suite 2 | Bismarck, ND | WWW.ASPENGROUPREALESTATE.COM

This information has been secured from sources we believe to be reliable, but we make no representation or warranties, expressed or implied, as to the accuracy of the information. All references to age, square footage, income and expenses are approximate. Buyers or lessors should conduct their own independent investigations and rely on those results.