



## SPACE AVAILABLE:

SUITE 6 | 1,580 SF

## PRICE:

\$15.50 + \$5.50 CAM

## HIGHLIGHTS:

- Reception Area
- 3 Private Offices
- Conference Room
- Storage Room
- Common Area Restrooms
- Private Outside Entry
- Great North Bismarck location off Washington Street.



## Scott Ritter

Broker Associate | Partner  
Commercial Realtor®

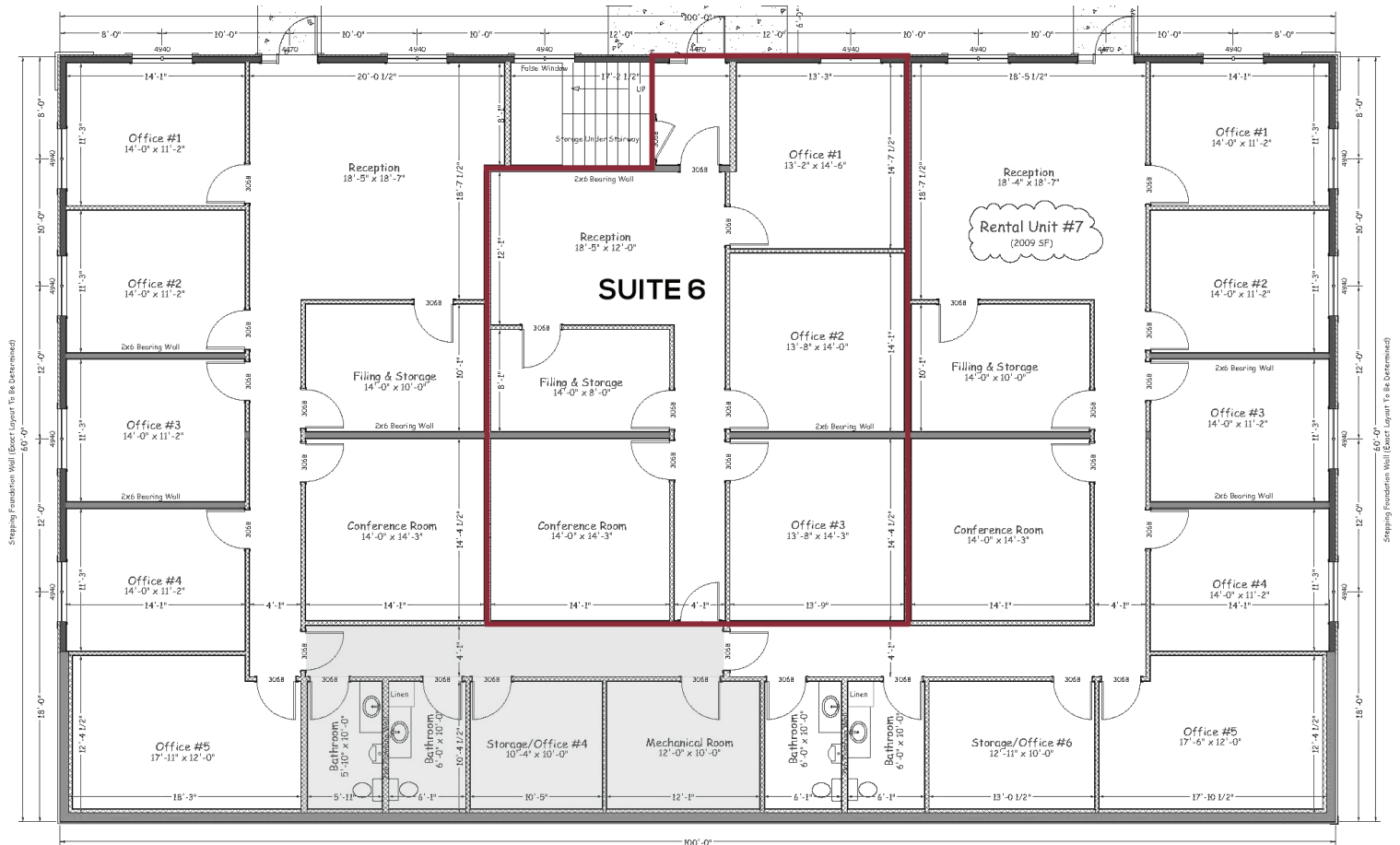
**701.223.2450**

[scott@aspengroupprealestate.com](mailto:scott@aspengroupprealestate.com)

**424 S 3rd Street, Suite 2 | Bismarck, ND | [WWW.ASPENGROUPPREALESTATE.COM](http://WWW.ASPENGROUPPREALESTATE.COM)**

This information has been secured from sources we believe to be reliable, but we make no representation or warranties, expressed or implied, as to the accuracy of the information. All references to age, square footage, income and expenses are approximate. Buyers or lessors should conduct their own independent investigations and rely on those results.

## FLOOR PLAN



COMMON AREA

Lower Level Plan



**Scott Ritter**

Broker Associate | Partner  
Commercial Realtor®

**701.223.2450**

[scott@aspengrouprealestate.com](mailto:scott@aspengrouprealestate.com)



## ADDITIONAL PICTURES



**Scott Ritter**

Broker Associate | Partner  
Commercial Realtor®

**701.223.2450**

[scott@aspengroupprealstate.com](mailto:scott@aspengroupprealstate.com)



## LOCATION MAP



**Scott Ritter**

Broker Associate | Partner  
Commercial Realtor®

**701.223.2450**

[scott@aspengroupprealstate.com](mailto:scott@aspengroupprealstate.com)