

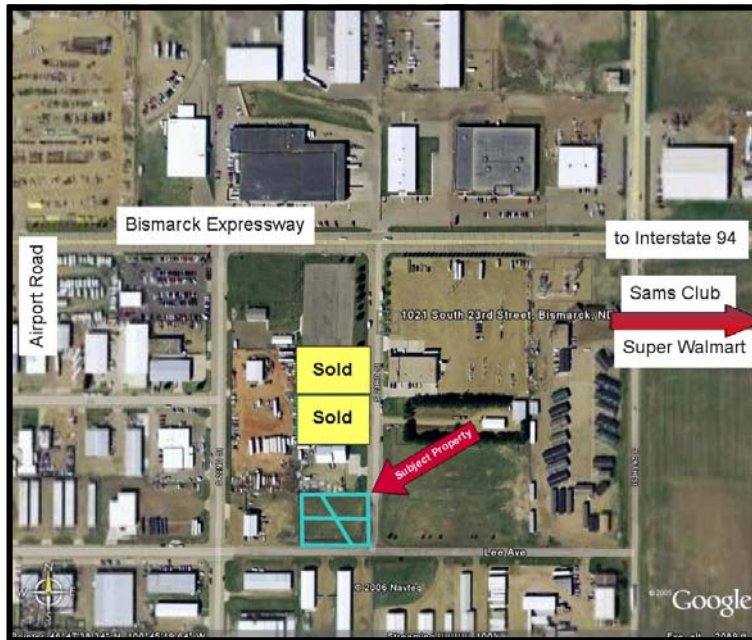


PRESENTED BY  
**Mathew Reichert**  
Broker/Owner  
**701.223.2450**

email: [matt@aspengrouprealestate.com](mailto:matt@aspengrouprealestate.com)  
web: [aspengrouprealestate.com](http://aspengrouprealestate.com)

**FOR SALE**

**2210 Lee Avenue**



**30,450 SF Commercial Development Lot**  
South 23rd & Lee Avenue

**Price:** \$106,575.00 (\$3.50 PSF)  
**Land:** 30,450 SF  
**Zoned:** MA Light Industrial



REAL ESTATE SERVICES

3712 Lockport Street  
Suite C  
Bismarck, North Dakota

## Data Information

### Properties Included:

**2210 Lee Avenue** Lot 30,450 SF  
Taxes: \$ 727.05

Special Assessments: \$ 8,949.62  
Installment: \$ 1,382.95

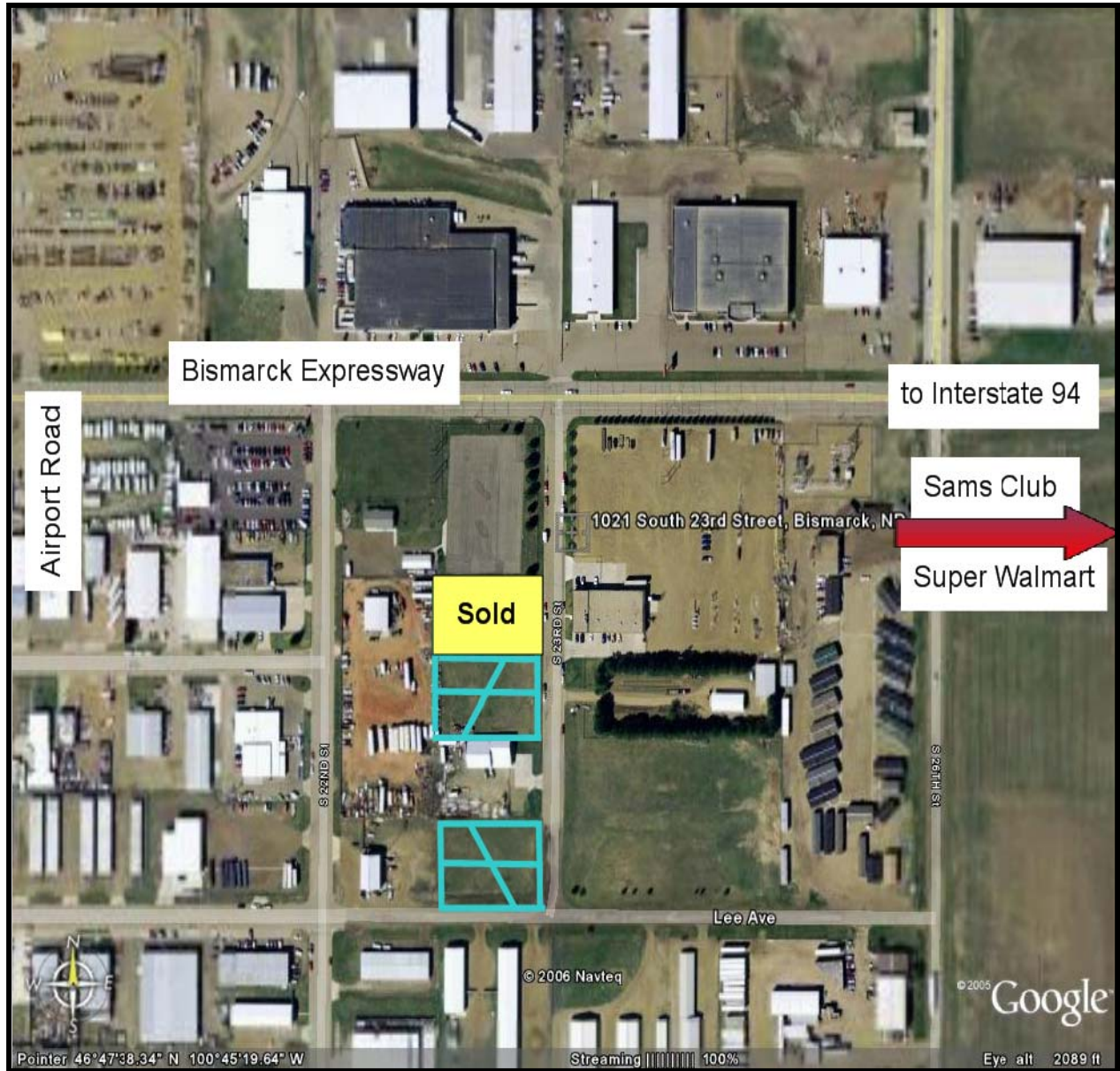
**1100 South 23rd Street** Lot 30,450 SF—**Sold**

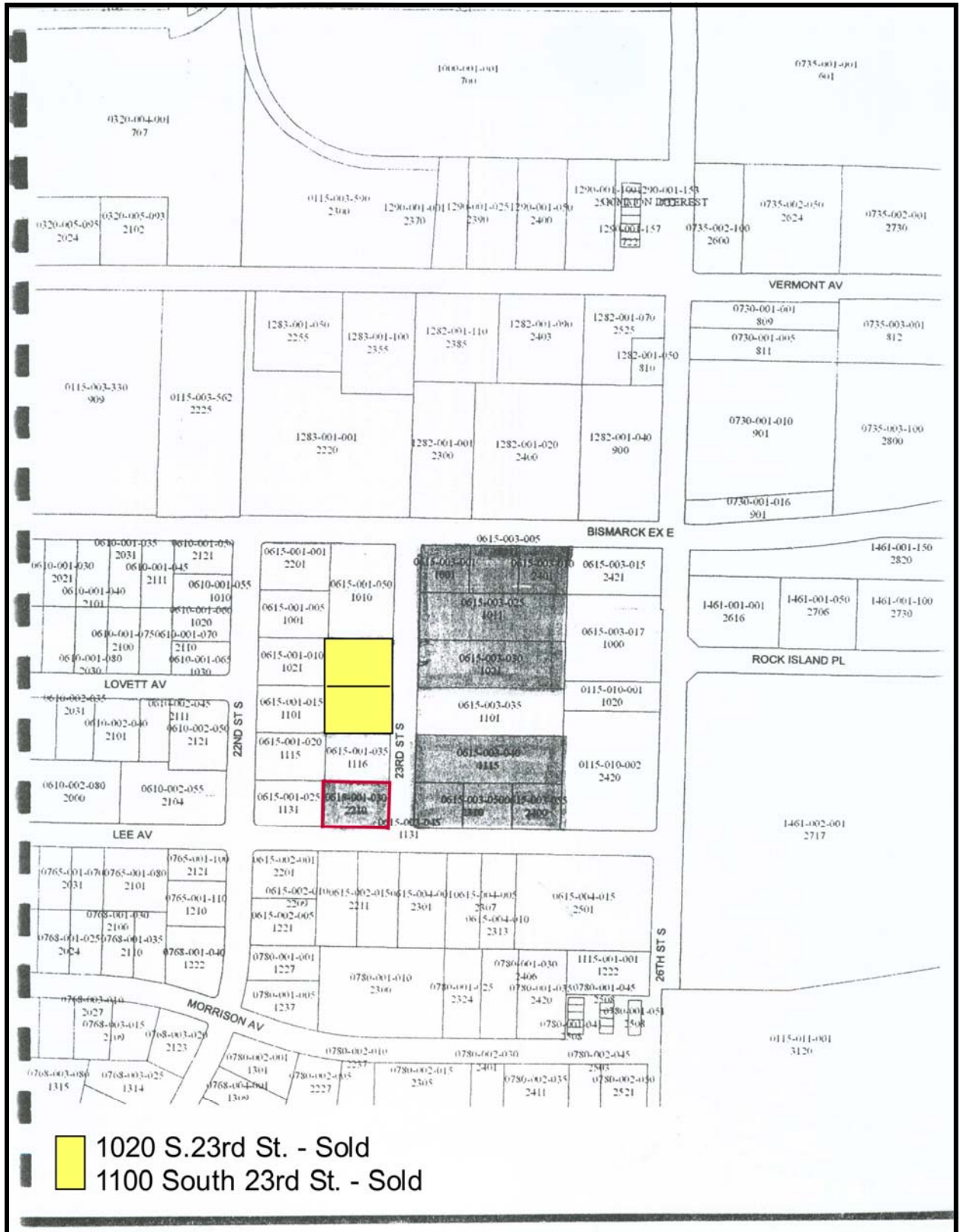
**1020 South 23rd Street** Lot 30,450 SF—**Sold**



REAL ESTATE SERVICES  
Bismarck, North Dakota

## South 23rd Street and Lee Avenue Properties Bismarck, ND







Bismarck Civic Center

TACO JOHN'S  
The Fresh Taste of West-Mex

burger KING

KFC

ACE  
Hardware

Applebee's

TJ-maxx  
see what's in this week

TARGET

alltel  
wireless

Kirkwood Mall

BEAUTY MART

Heibergers

BARNES & NOBLE  
www.bn.com

True Value  
HARDWARE • HOME CARE • PAINTS

SCHEELS

tsal inside  
KFC

Office DEPOT

BIG  
LOTS!

To 1021 South 3rd Street

Pointer 46°47'51.19" N 100°47'02.76" W

Image © 2006 DigitalGlobe

© 2006 Navteq

Streaming 100%

Google

Eye alt 4639 ft