



PRESENTED BY:

George Yineman, Commercial Realtor
701.223.2450 office

email: george@aspengrouprealestate.com
web: aspengrouprealestate.com

FOR SALE

Lake Metigoshe Commercial Property



3 Lots & Mobile Home

- Price:** \$200,000.00
- Building:** Mobile Home
- Lot Size:** Approximately 1.43 Acres
- Features:** Beautiful lake views
Large open parking lot
High traffic & highly visible property



REAL ESTATE SERVICES

701-223-2450 office
701-223-2322 fax
3712 Lockport Street, Suite C
Bismarck, North Dakota

**Data Information
Metigoshe, ND**

**Property Available
3 Lots and Mobile Home**

Parcel 1:

Legal Description: Lot 7, Hart's Addition, Roland Township
PID#: 02-4021-02417-000
Taxes: \$118.07

Parcel 2:

Legal Description: Lot 8, Hart's Addition, Rowland township
PID#: 02-4021-02418-000
Taxes: \$913.35

Parcel 3:

Legal Description: Lot 12, Green Acres Addition, Rowland
Township
PID#: 02-4038-02726-000
Taxes: \$772.28

Mobile Home

PID#: 02-8000-06800-000
Taxes: \$86.96

The building located on Lot 3 (Parcel 3 above) is being sold separately and houses the Metigoshe Drive-In. That building and the business are also for sale. Details can be found on www.aspengrouprealestate.com. Look under "Business For Sale" or contact Steve Ilse at 701-223-2450 or at steve@aspengrouprealestate.com for details.



REAL ESTATE SERVICES
Bismarck, North Dakota

Enjoy the Beautiful Turtle Mountains

Spring, summer, fall and winter are special times in the Turtle Mountains of North Dakota and Manitoba. The Turtle Mountains are known for the wide variety of outdoor recreation found there. Hunting, fishing, camping, boating, golfing, swimming, sightseeing, bird watching, skiing and snowmobiling are available throughout the area.



edge of the Turtle Mountains.

This is Tommy Turtle's home. Tommy is the area's popular host to the retreat where nature and people find fun and contentment in the Turtle Mountains.

Many lakes dot the region on either

side of the border making the area a fisherman's delight. Pike, walleye, perch, pan fish and trout test the wits of anglers from all parts of the country in many top notch lakes and streams.

The abundant water, food and natural cover also attract many game animals making the area a popular spot for all hunters.

Don't forget those golf clubs when you visit the Turtle Mountains. Golf courses in many convenient locations throughout the area are waiting to test your skills and show you just how exciting the sport can be in these northern wooded hills.

If you enjoy hunting, fishing, boating, swimming, water skiing, camping, golf, snowmobiling or just taking it easy in the beautiful natural surroundings, you'll enjoy the Turtle Mountains.

Camping facilities range from the nearly complete comfort type to wilderness type.

The hills are heavily wooded and interspersed with lakes. During the summer, the landscape turns a deep blue green. Fields between the hills are planted, and pastures and meadows become lush and green.

Indians found the area a rich hunting ground for game including birds, deer, moose, and other furbearers. Trees and shrubs in the colorful hills provided native Americans with food and protection from fierce prairie winters.

Today the Turtle Mountains are a recreational center for thousands who live in the middle of the continent, en route to the colorful International Peace Garden. Bottineau lies on the western



REAL ESTATE SERVICES
Bismarck, North Dakota



Lot Views



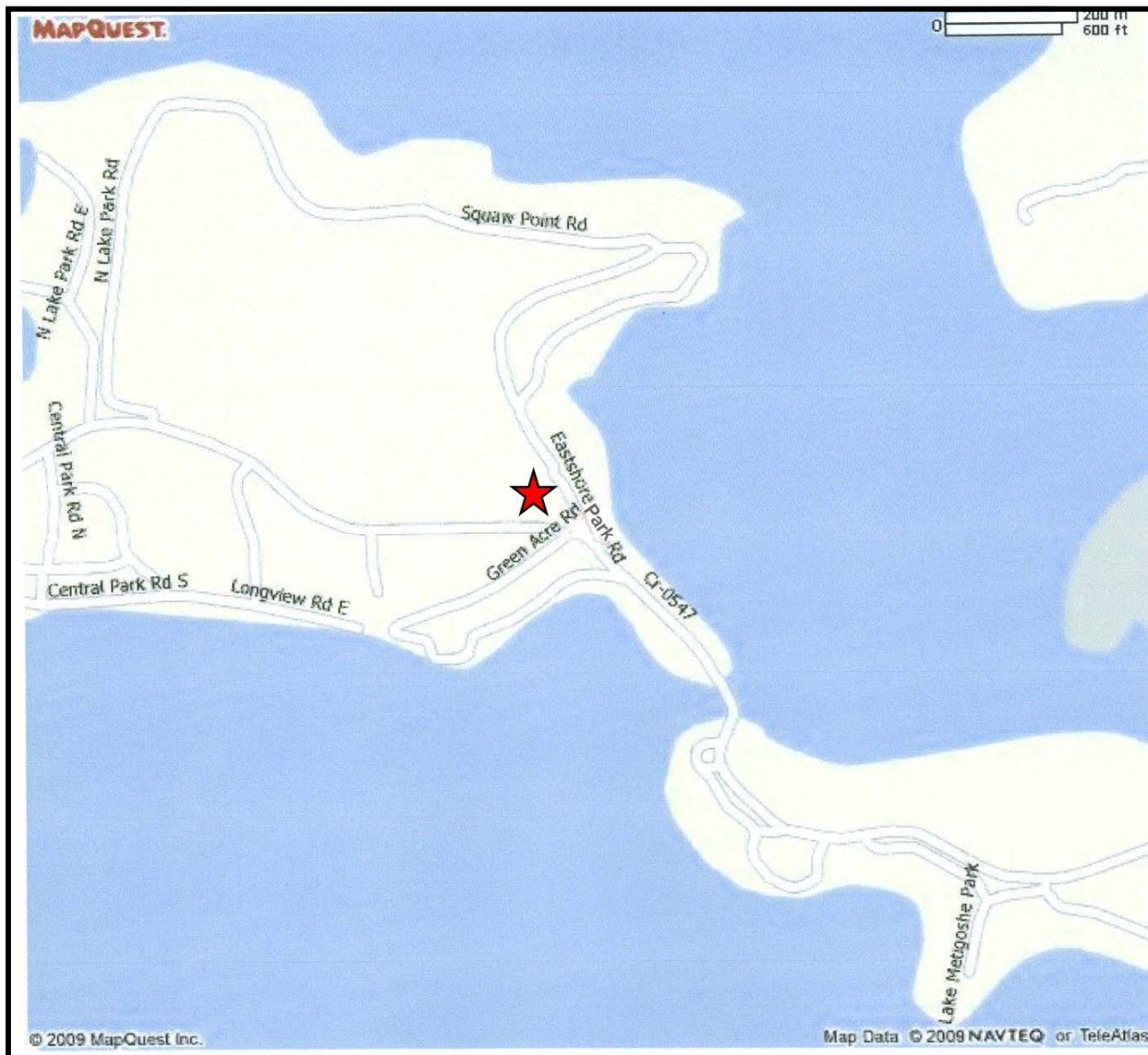
REAL ESTATE SERVICES
Bismarck, North Dakota



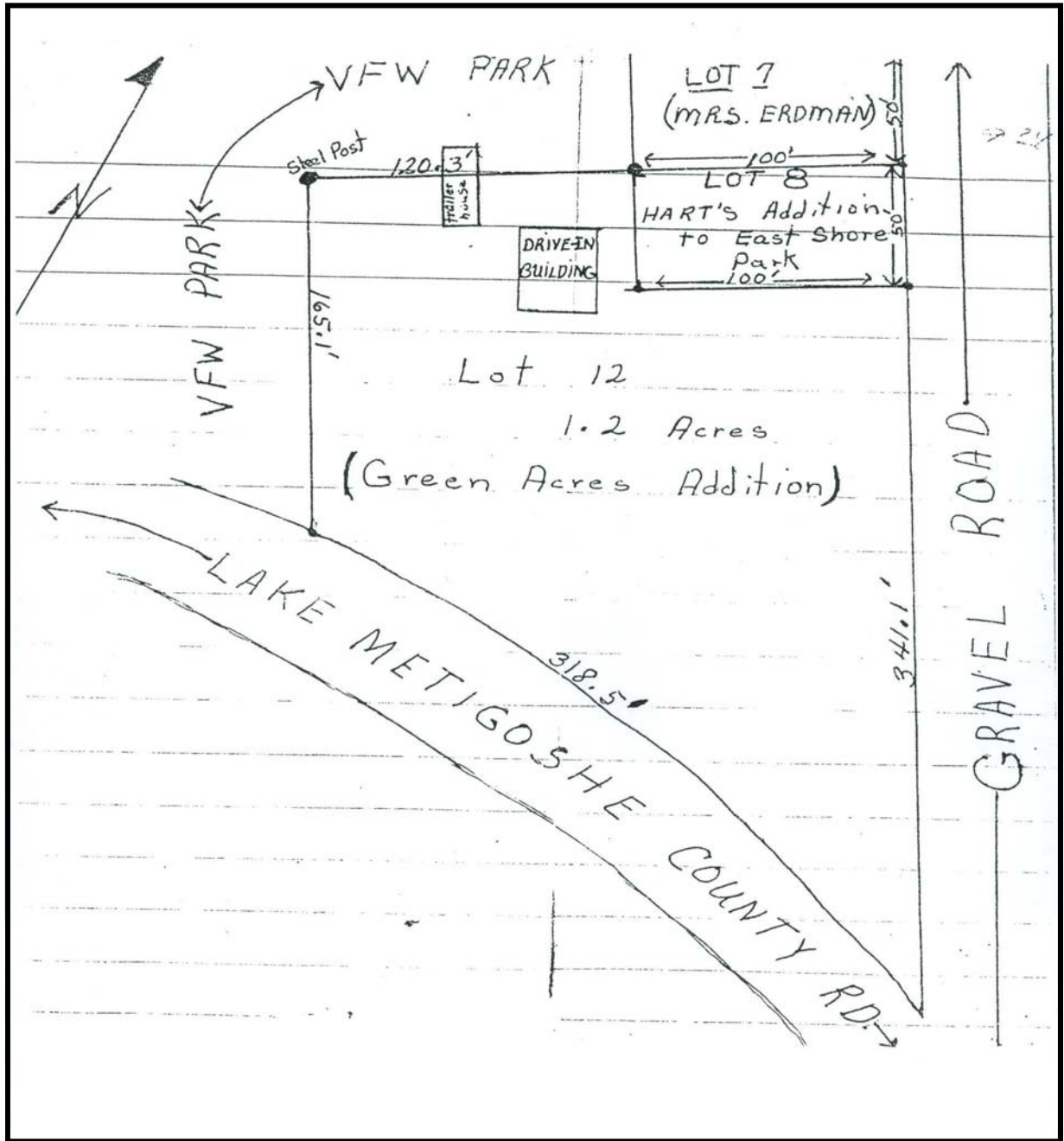
Mobile Home



REAL ESTATE SERVICES
Bismarck, North Dakota



REAL ESTATE SERVICES
Bismarck, North Dakota



REAL ESTATE SERVICES
Bismarck, North Dakota



REAL ESTATE SERVICES
Bismarck, North Dakota