



PRESENTED BY:

George Yineman, Commercial Realtor
701.223.2450 office

email: george@aspengrouprealestate.com
web: aspengrouprealestate.com

FOR LEASE 1414 & 1418 S. 26th Street



Heated Warehouse/Office Space

Price: \$4.50 PSF Gross Rent "AS IS" or
\$5.00 PSF Gross Rent With New
Restrooms

Space Available: 10,750 SF

Terms: 3 Year Minimum

Features: 408 SF Office With Mezzanine
Large fenced yard for storage



REAL ESTATE SERVICES

701-223-2450 office
701-223-2322 fax
3712 Lockport Street, Suite C
Bismarck, North Dakota

**Information Sheet
1414 & 1418 S. 26th Street
Bismarck, ND**

**TAXES, SPECIALS
& INSURANCE:**

Paid by Landlord

YEAR BUILT:

1964

PROPERTY TYPE:

Warehouse/Office

ZONING:

MA Light Industrial

PRICE:

**\$4.50 PSF Gross Rent "As Is"
\$5.00 PSF Gross Rent With New Restrooms**

UTILITIES:

**Electrical, gas, snow removal,
yard maintenance paid by Tenant.**

HEATING/COOLING: Gas forced air heat

OVERHEAD DOORS: 14' Roll-up doors with openers

HOISTS:

**2—5 Ton Hoists
1—1 Ton Hoist**



**REAL ESTATE SERVICES
Bismarck, North Dakota**

Located Near
Bismarck Airport
Super Wal-Mart (South)
Coventry Health Care



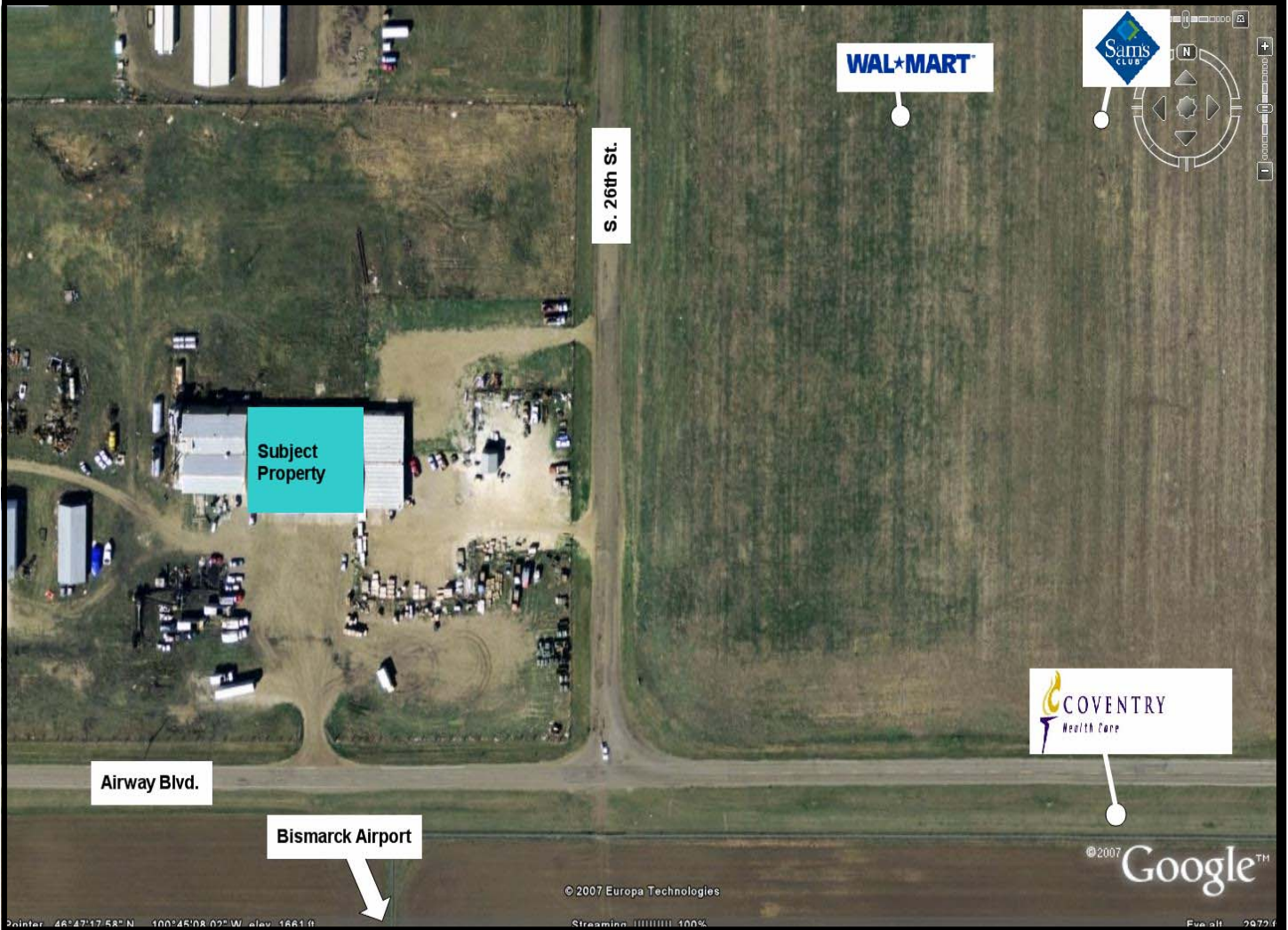
REAL ESTATE SERVICES
Bismarck, North Dakota



REAL ESTATE SERVICES
Bismarck, North Dakota



REAL ESTATE SERVICES
Bismarck, North Dakota



REAL ESTATE SERVICES
Bismarck, North Dakota