



PRESENTED BY:

George Yineman, Commercial Realtor
701.223.2450 office

email: george@aspengrouprealestate.com
web: aspengrouprealestate.com

FOR LEASE: 1000 Tacoma Avenue, Suite 300



Professional Office Space

- Price:** \$14.00 PSF Base Rent +
CAM \$3.60 PSF
- Size:** 1,672 SF Available
- Terms:** 5 Year Minimum
- Features:** Professional Atmosphere
High End Finishes
Abundant Windows
Highly Visible From University Dr.
Convenient, Generous Parking



REAL ESTATE SERVICES

701-223-2450 office
701-223-2322 fax
3712 Lockport Street, Suite C
Bismarck, North Dakota

**Information Sheet
1000 Tacoma Avenue
Bismarck, ND**

Located on Tacoma Avenue at University Drive

1,672 SF Available

\$14.00 PSF Base Rent + Utilities & CAM

Tenant responsible for restrooms in common area

High End Finishes

Great Colors, Great Lighting

Open Work Area

1 Large Conference Room

1 Utility Closet

Abundant Windows

Exterior Signage on Building

Gas and Electric Separately Metered

Brick Exterior on Building

Generous Parking



**REAL ESTATE SERVICES
Bismarck, North Dakota**

Located Near:

Medcenter One Clinic

Kirkwood Bank & Trust

Trademark Realty

Unistop Convenience Store

Race Day Lube & Wash

Healthways

Other Tenants In Building:

Advanced Physical Therapy

Edward Jones

Great Northern Energy

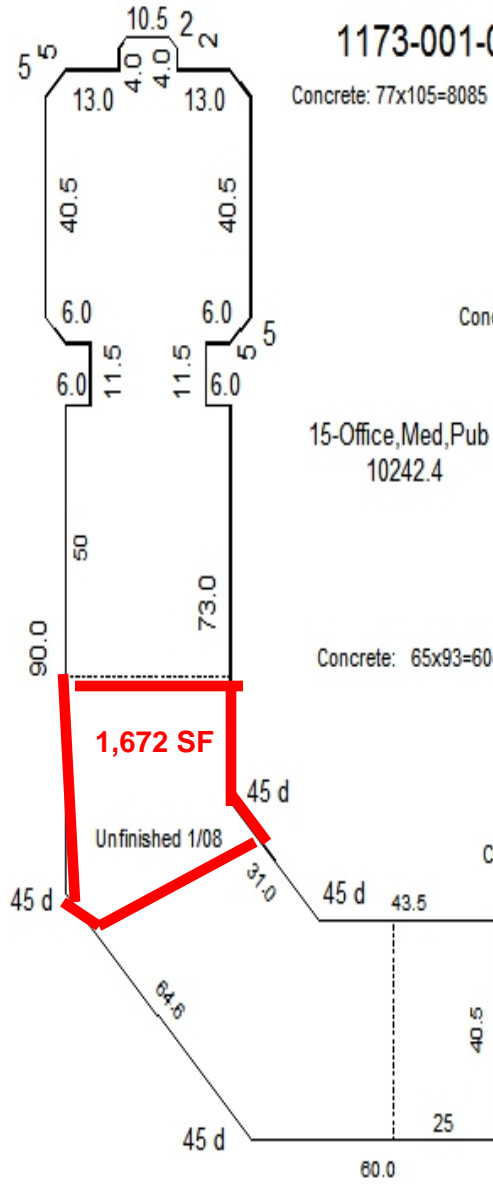
Glasser Images



REAL ESTATE SERVICES
Bismarck, North Dakota



1173-001-050 1000 Tacoma Av

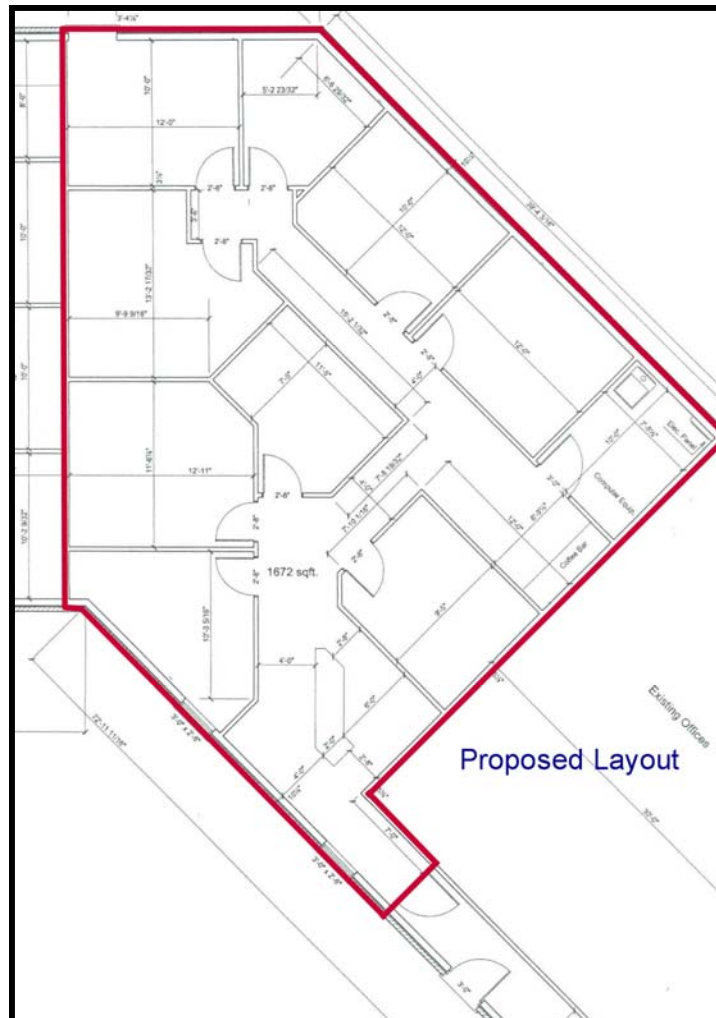
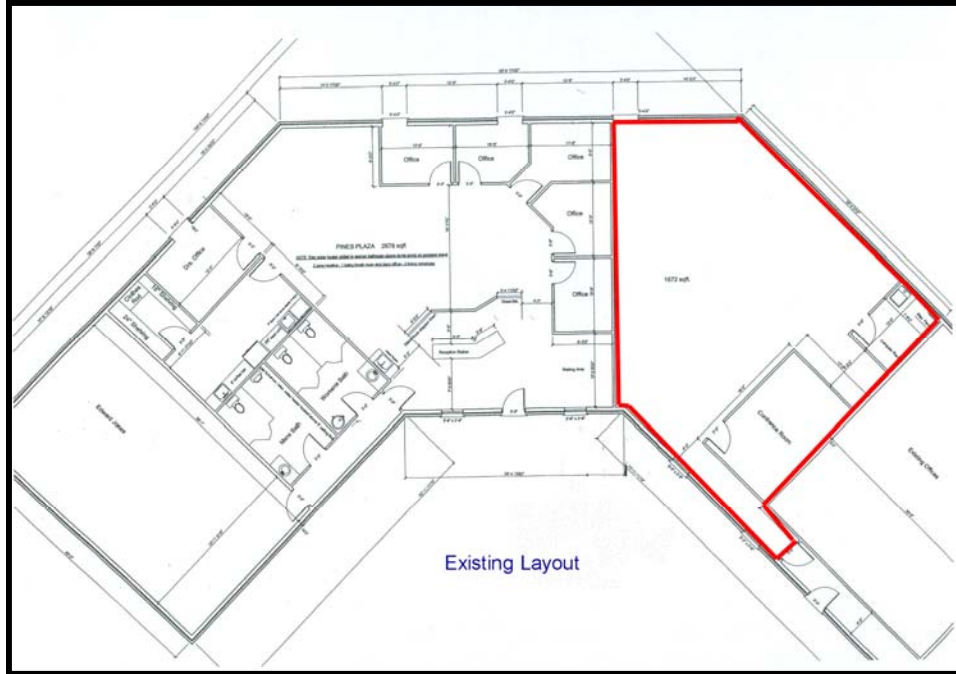


Space Available

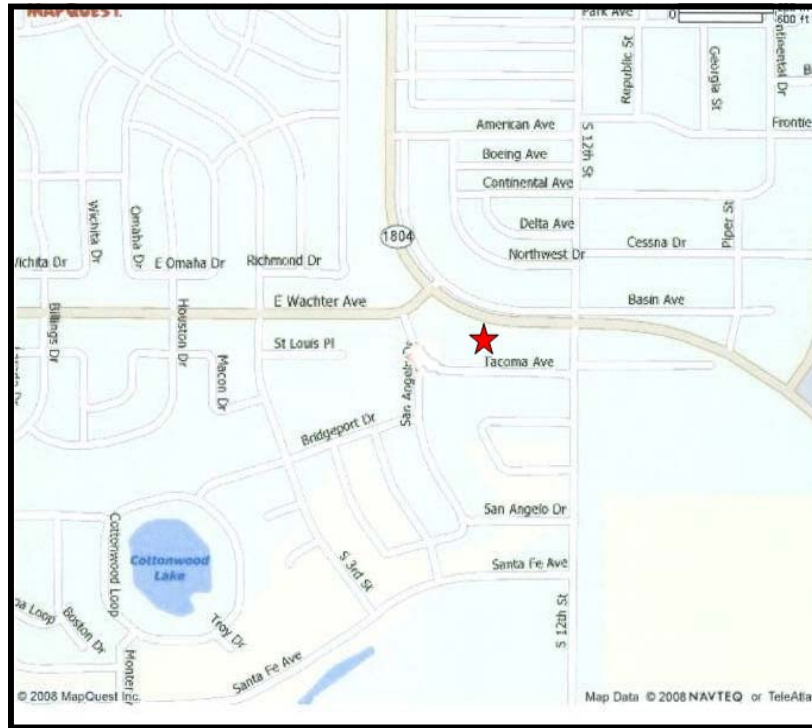
Sketch by Apex IV™



REAL ESTATE SERVICES
Bismarck, North Dakota



Location



This information has been secured from sources we believe to be reliable, but we make no representation or warranties, expressed or implied, as to the accuracy of the information. All references to age, square footage, income and expenses are approximate. Buyers or lessors should conduct their own independent investigations and rely only on those results.