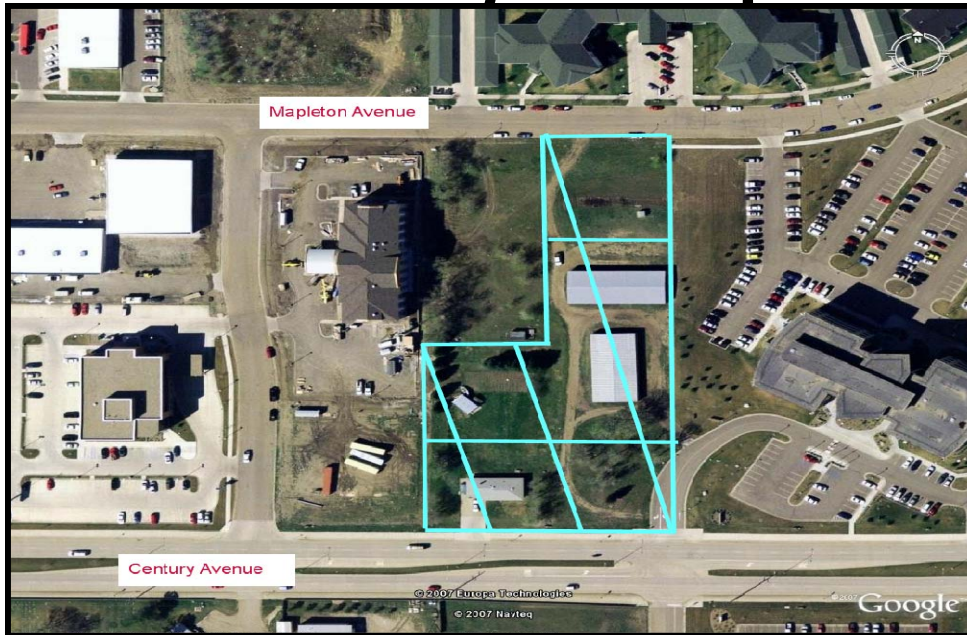




PRESENTED BY  
**Mathew Reichert**  
Broker/Owner  
**701.223.2450**

email: [matt@aspengrouprealestate.com](mailto:matt@aspengrouprealestate.com)  
web: [aspengrouprealestate.com](http://aspengrouprealestate.com)

## FOR SALE Century and Mapleton Avenue



### 3 Lots-112,160 SF

1402 & 1416 East Century Avenue and 1501 Mapleton Avenue

**Price:** \$1,430,040.00 (\$12.75 PSF)  
**Land Size:** 112,160 SF  
**Property Class:** Commerical  
**Zoning:** CG Commercial  
**Lot Size:** 112,160 SF  
**Features:** Great North Location  
Frontage on East Century  
Frontage on Mapleton Avenue



REAL ESTATE SERVICES

Bismarck, North Dakota

## Data Information

**Taxes:** 1402-\$2,988.34  
1416-\$1,433.41  
1521-\$6,301.56

**PID#:** 1402 East Century—0160-022-005  
1416 East Century-0160-022-001  
1521 Mapleton Avenue—0160-022-310

**Specials:** 1402-Balance—\$40.02, Installment—\$15.16  
1416-None at this time  
1521-Balance—\$330.00, Installment—\$128.73

**Access:** From Century Avenue  
From Mapleton Avenue



REAL ESTATE SERVICES  
Bismarck, North Dakota

## Location

Located on Century Avenue and Mapleton Avenue near Highway 83  
Corridor  
Easy access to I-94

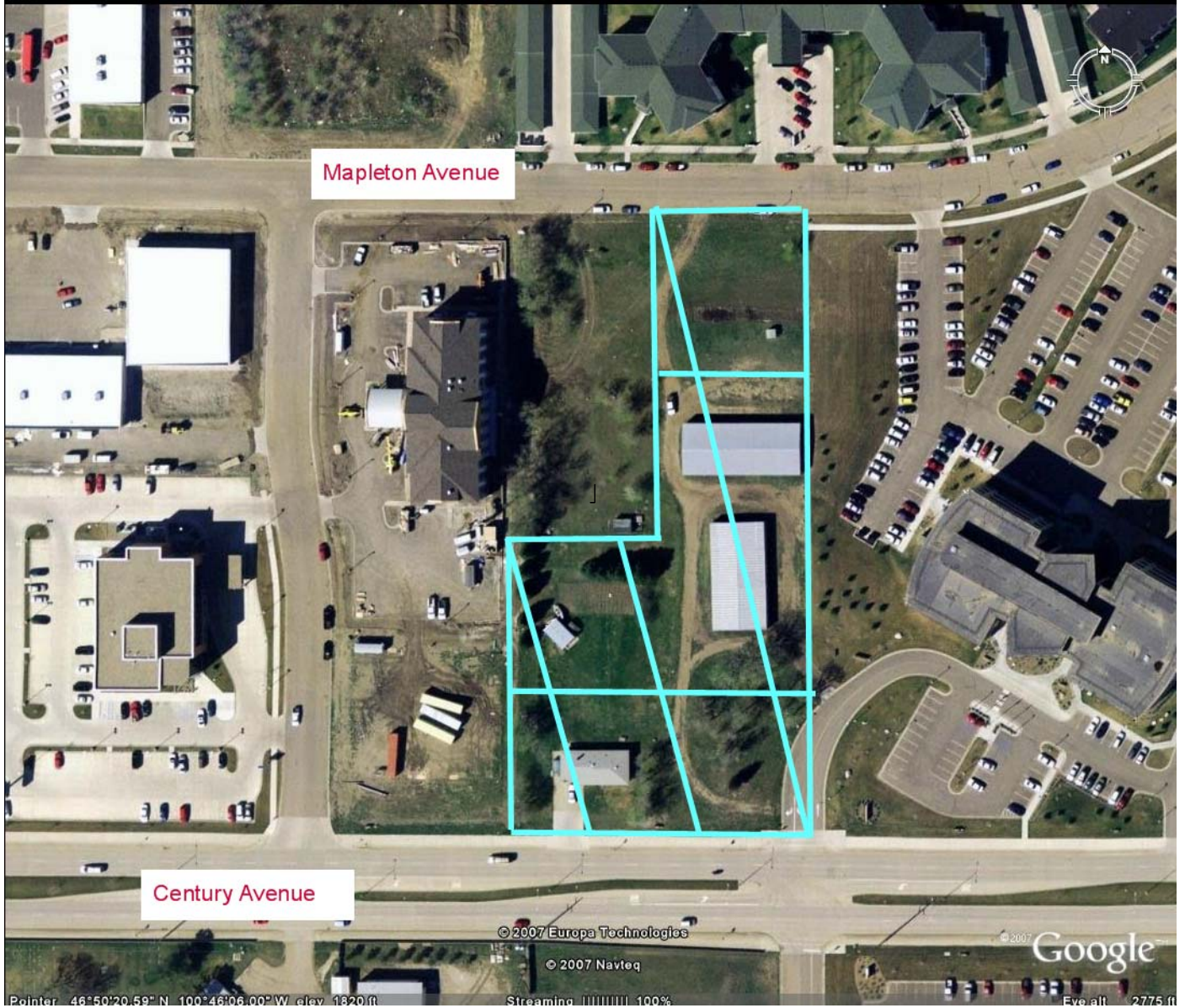
## Located Near

ND State Capital  
ND Job Service  
ND Workforce Safety and Insurance  
ND Commerce Department  
Basin Electric Power Cooperative  
Aetna US Healthcare  
Super Walmart  
Furniture Row  
Hobby Lobby  
Menards  
Kirkwood Bank  
US Bank  
Dan's Super Market  
Space Aliens Restaurant  
Applebee's  
Red Lobster  
McDonald's  
Arby's  
Schlotzky's  
China Star



REAL ESTATE SERVICES  
Bismarck, North Dakota





REAL ESTATE SERVICES  
Bismarck, North Dakota



Pointer 46°50'18.83" N 100°46'17.04" W

Image © 2006 DigitalGlobe

© 2006 Navteq

Streaming 100%

© 2005 Google

Eye alt 6830 ft