



PRESENTED BY:

George Yineman, Commercial Realtor
701.223.2450 office

email: george@aspengrouprealestate.com
web: aspengrouprealestate.com

FOR LEASE

815 E. Main Ave



Main Floor Office Space on Main Avenue

- Space Available:** 2,800 SF Office Space
Currently cold shell—will build to suit
- Lease Rate:** \$13.00 PSF Gross Rent +
improvements + utilities
- Terms:** 3 years
- Features:** Main floor space
On site parking
New finishes throughout



REAL ESTATE SERVICES
Bismarck, North Dakota

**815 E. Main Ave.
Bismarck, ND**

Features:

- ◆ **Great Main street location formerly Richtman's Printing facility**
- ◆ **Main floor space with large showroom windows**
- ◆ **New finishes throughout**
- ◆ **Renovation to be completed summer of 2011**
- ◆ **Common shared restrooms or private restrooms included in your space**
- ◆ **Freight elevator to lower level**
- ◆ **Great signage opportunities**
- ◆ **On site parking in front of space**
- ◆ **2,720 SF of cold storage lower level space also available at \$3.50 PSF**
- ◆ **Consistent temperature / dry conditions with lighting in lower level cold storage space**



REAL ESTATE SERVICES
Bismarck, North Dakota

LOCATED NEAR

Vue Community Credit Union

Pizza Hut

Bismarck's Main Street Bar

St. Alexius Medical Center

Interstate Batteries

Terry's Health Products

Hellman Brothers Men's Clothing

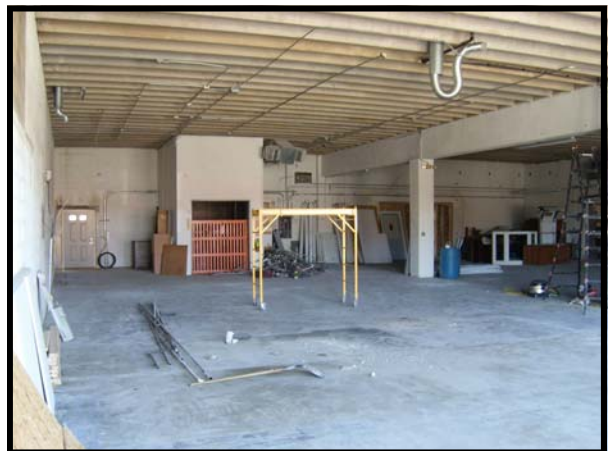
H2O Modern Apparel

Modern Hair Works

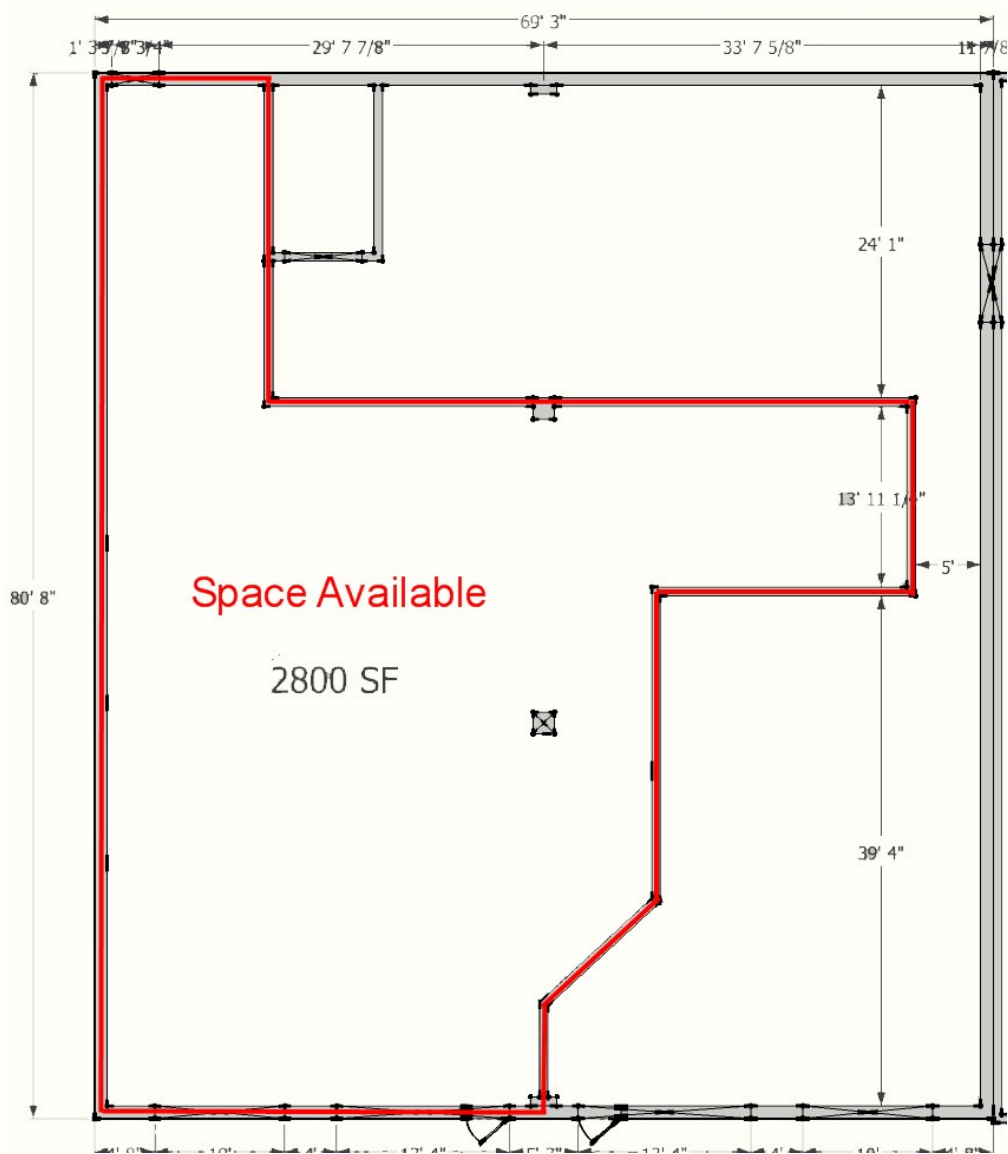
Dakota Pharmacy



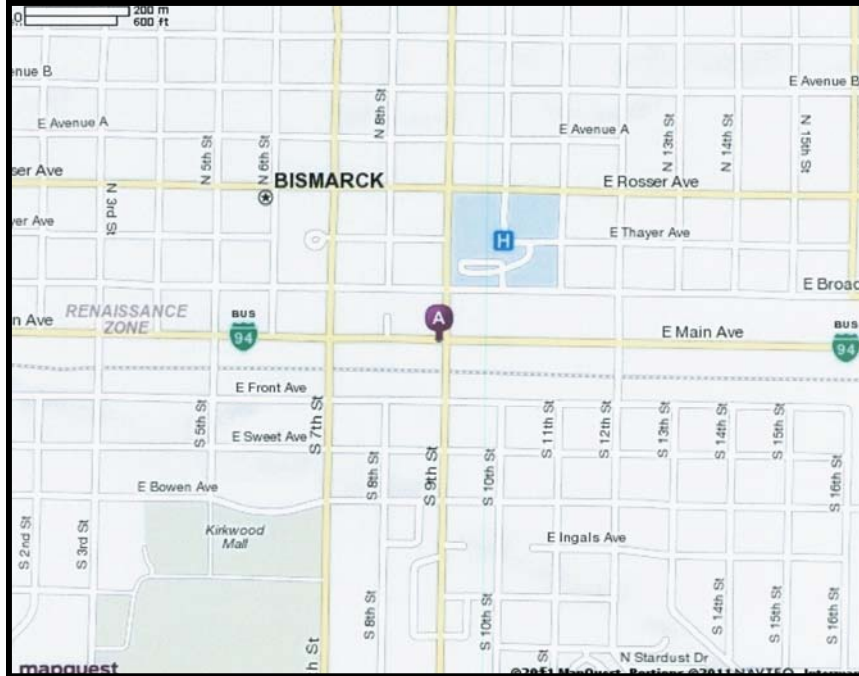
REAL ESTATE SERVICES
Bismarck, North Dakota



Floor Plan



REAL ESTATE SERVICES
Bismarck, North Dakota



This information has been secured from sources we believe to be reliable, but we make no representation or warranties, expressed or implied, as to the accuracy of the information. All references to age, square footage, income and expenses are approximate. Buyers or lessors should conduct their own independent investigations and rely only on those results.