

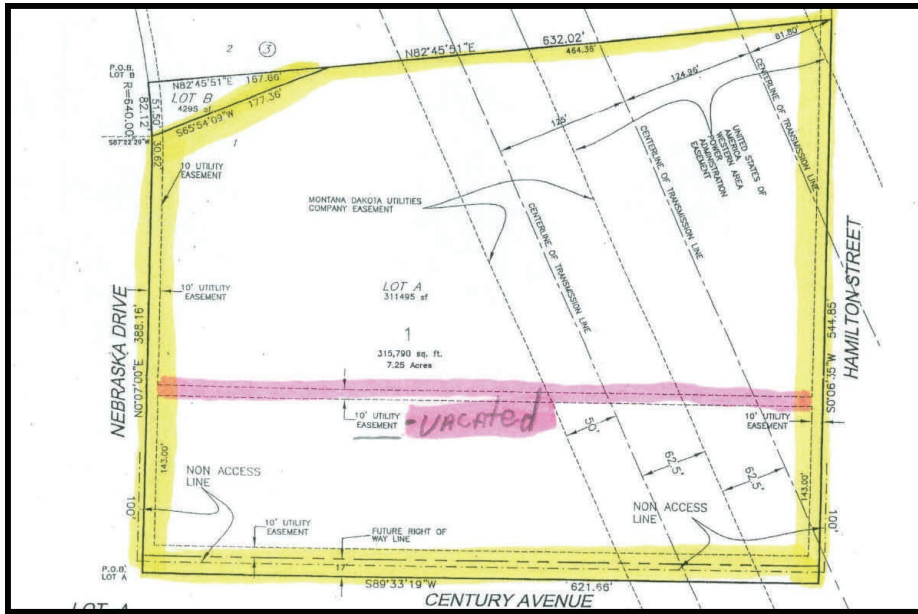


PRESENTED BY
Mathew Reichert
Broker/Owner
701.223.2450

email: matt@aspengrouprealestate.com
web: aspengrouprealestate.com

FOR SALE

3015 Nebraska Drive



Large Commercial Parcel Located on Century Avenue

Price: \$6.00 PSF
Lot Size: 300,746 SF
PID#: 1239-003-001
Zoned: RT Residential Light Commercial
Features: Land was leveled
621' frontage on Century Avenue
Easy access to I 94 and Highway 83



REAL ESTATE SERVICES

3712 Lockport Street
Suite C
Bismarck, North Dakota

**Data Information
3015 Nebraska Drive
Bismarck, ND**

PID#: 1239-003-001

Legal Description: Lot A of Lot 1 less that part taken for St,
R/W, Block 3, Pebble Creek 8th

Taxes: \$5,226.30

Special Assessments: \$61,478.14 Balance, \$9,792.94 Installment

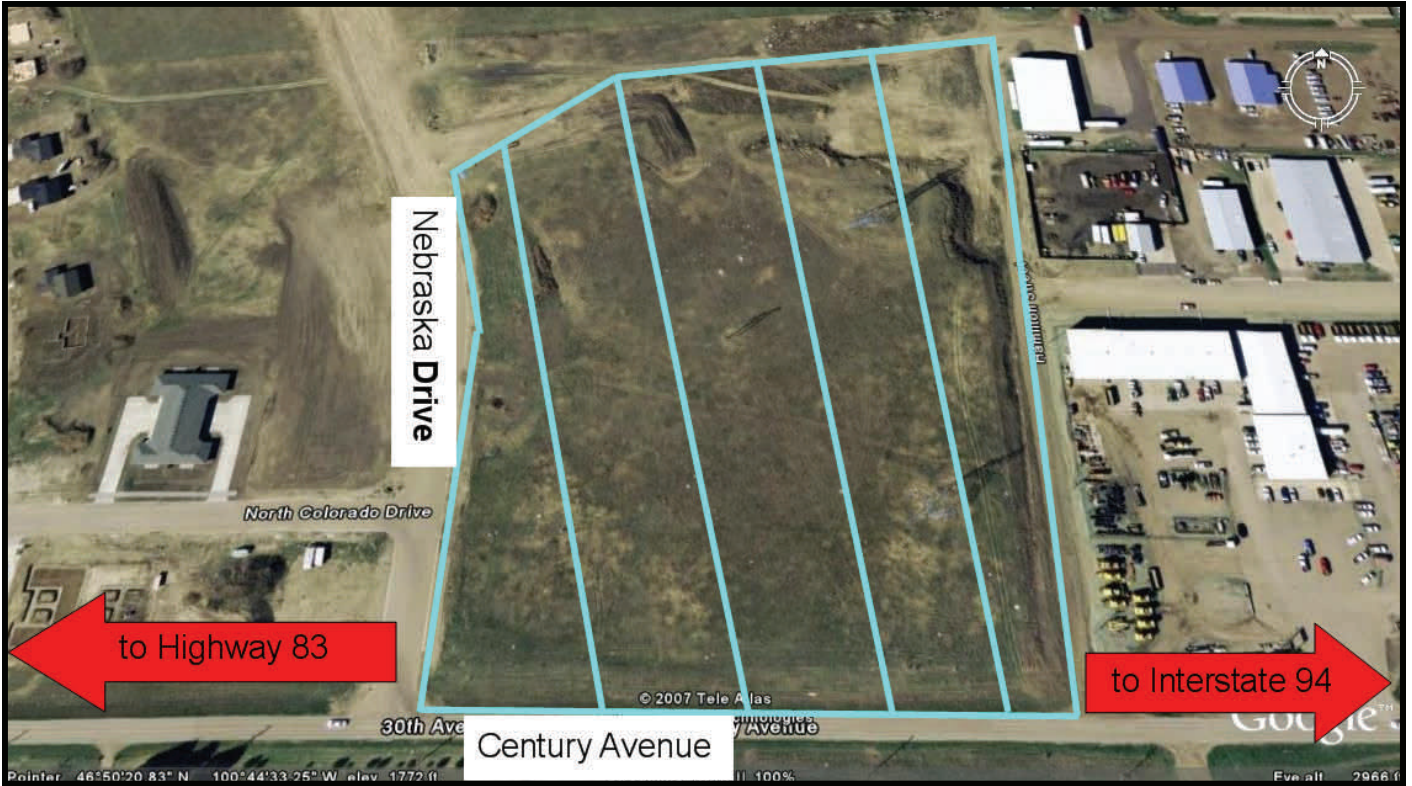
Zoned: RT Residential Light Commercial

Lot Size: 300,746 SF

**Land was leveled.
10' Utility Easement running East and West has been Vacated.**



REAL ESTATE SERVICES
Bismarck, North Dakota



REAL ESTATE SERVICES
Bismarck, North Dakota