



PRESENTED BY:

George Yineman, Commercial Realtor
701.223.2450 office

email: george@aspengrouprealestate.com
web: aspengrouprealestate.com

FOR SALE 2801 Ithica Dr., 2724, 2800 Hawken St.



Prime NW Bismarck Development Lots
West Century Ave. & Ithica Dr.

- Price:** \$4.50 PSF—\$9.00 PSF
- Lot Size:** 1.12 Acres—2.33 acres available
- Zoned:** RT Residential Light Commercial
- Features:** Near MDU Resources Campus & Pinehurst Square Shopping Center



REAL ESTATE SERVICES

701-223-2450 office
701-223-2322 fax
Bismarck, North Dakota

Data Information

2801 Ithica Drive, Bismarck, ND

Lot 1, Block 1, Washington Heights 12th Addition

PID#: 0569-001-001

Lot Size: 101,642 SF, 2.33 Acres

Taxes: \$1,616.35

Specials: \$32,479.44 Balance; \$7,376.06 Installment

Zoned: RT Residential Light Commercial

Price: \$457,389.00 (\$4.50 PSF)

2724 Hawken Street, Bismarck, ND

Lot 2, Block 1, Washington Heights 12th Addition

PID#: 0569-001-050

Lot Size: 78,035 SF; 1.79 Acres

Taxes: \$1,240.91

Specials: \$18,955.53 Balance; \$1,730.38 Installment

Zoned: RT Residential Light Commercial

Price: \$546,245.00 (\$7.00 PSF)

2800 Hawken Street. Bismarck, ND

Lot 3, Block 1, Washington Heights 12th Addition

PID# 0569-001-100

Lot Size: 48,978.SF (1.12 Acres)

Taxes: \$779.55

Specials: \$13,814.21 Balance, \$2,763.98 Installment

Zoned: RT Residential Light Commercial

Price: \$440,802.00 (\$9.00 PSF)

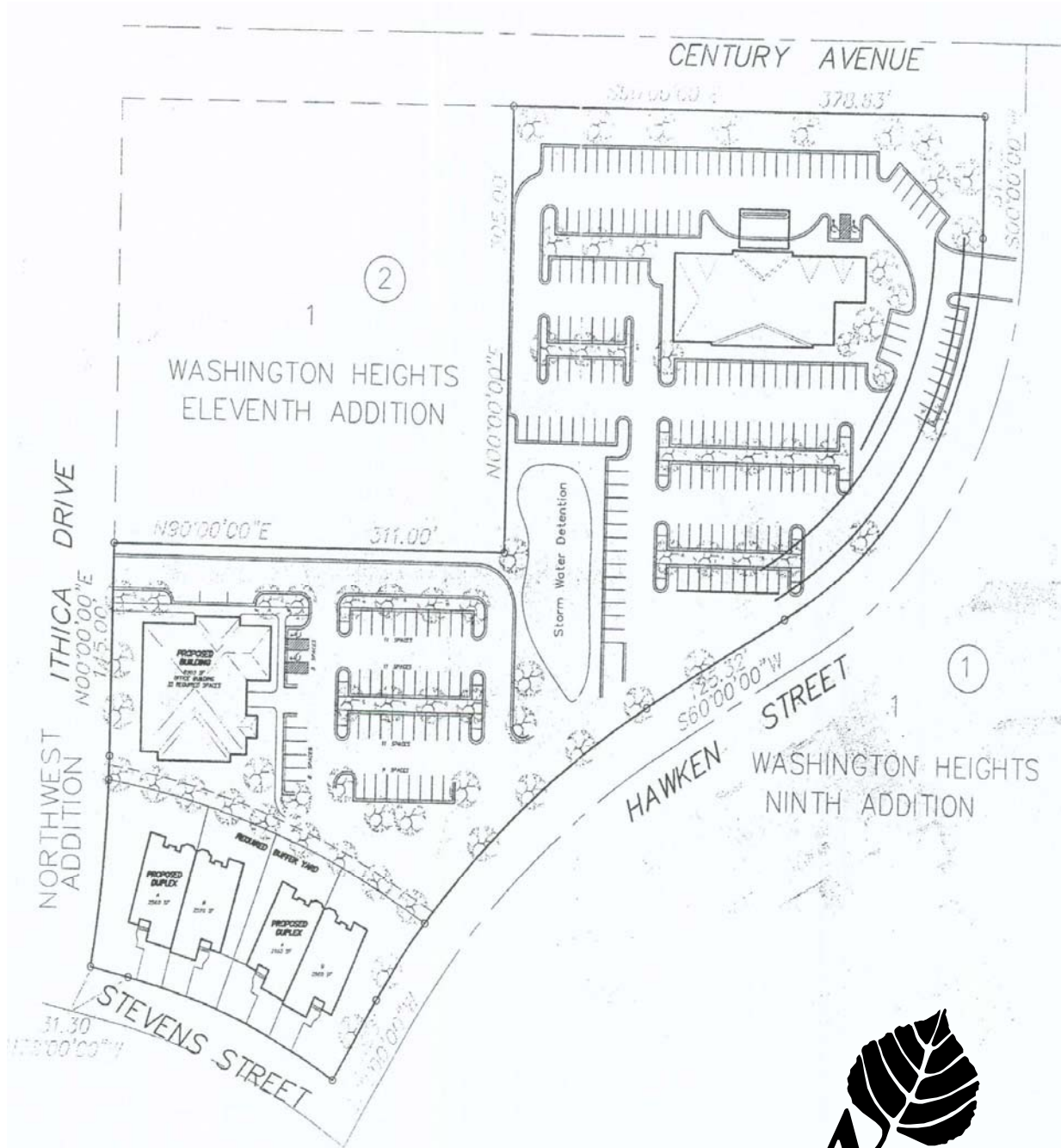


REAL ESTATE SERVICES
Bismarck, North Dakota



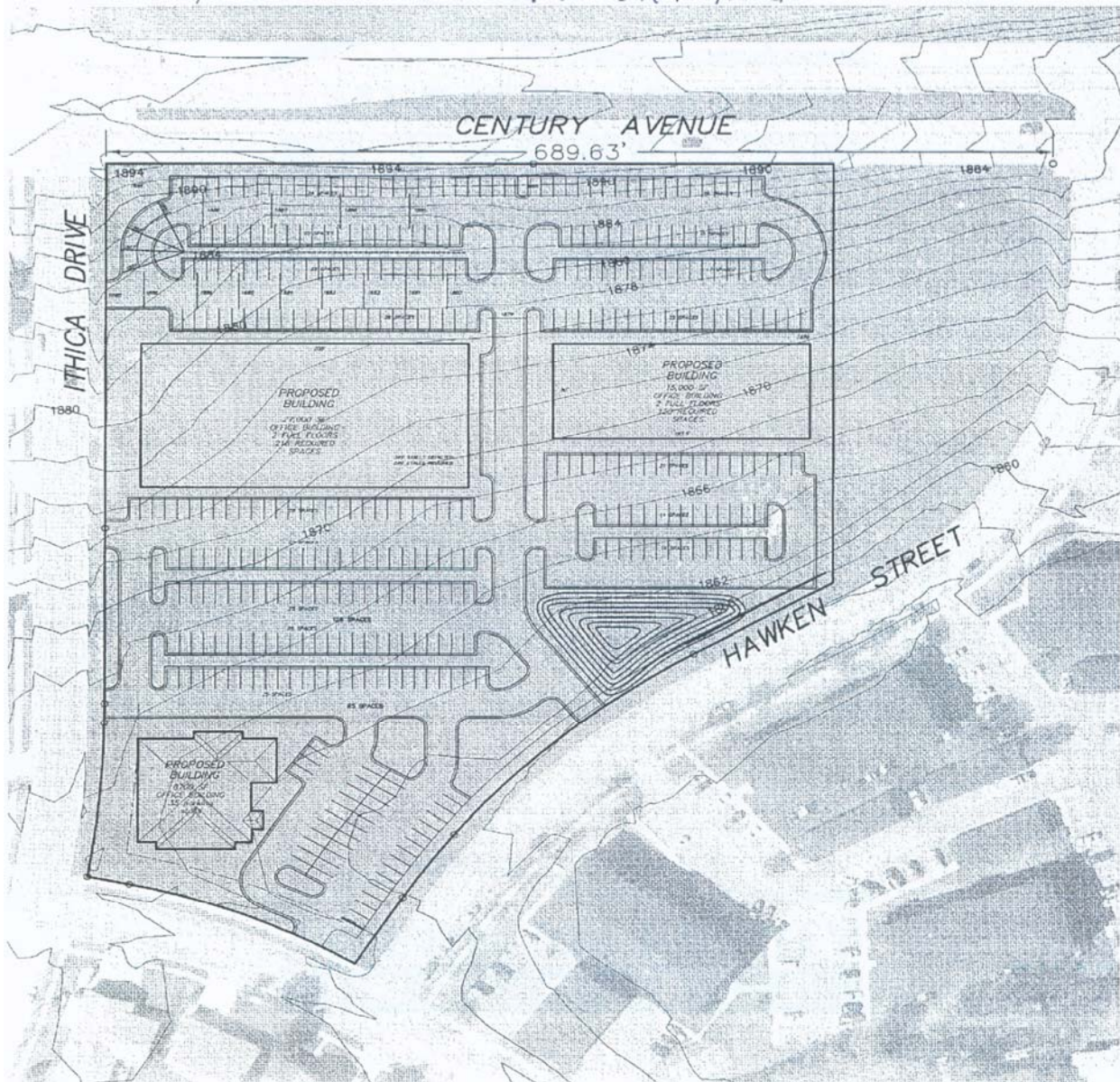
REAL ESTATE SERVICES
Bismarck, North Dakota

Proposed Concept Drawing—1

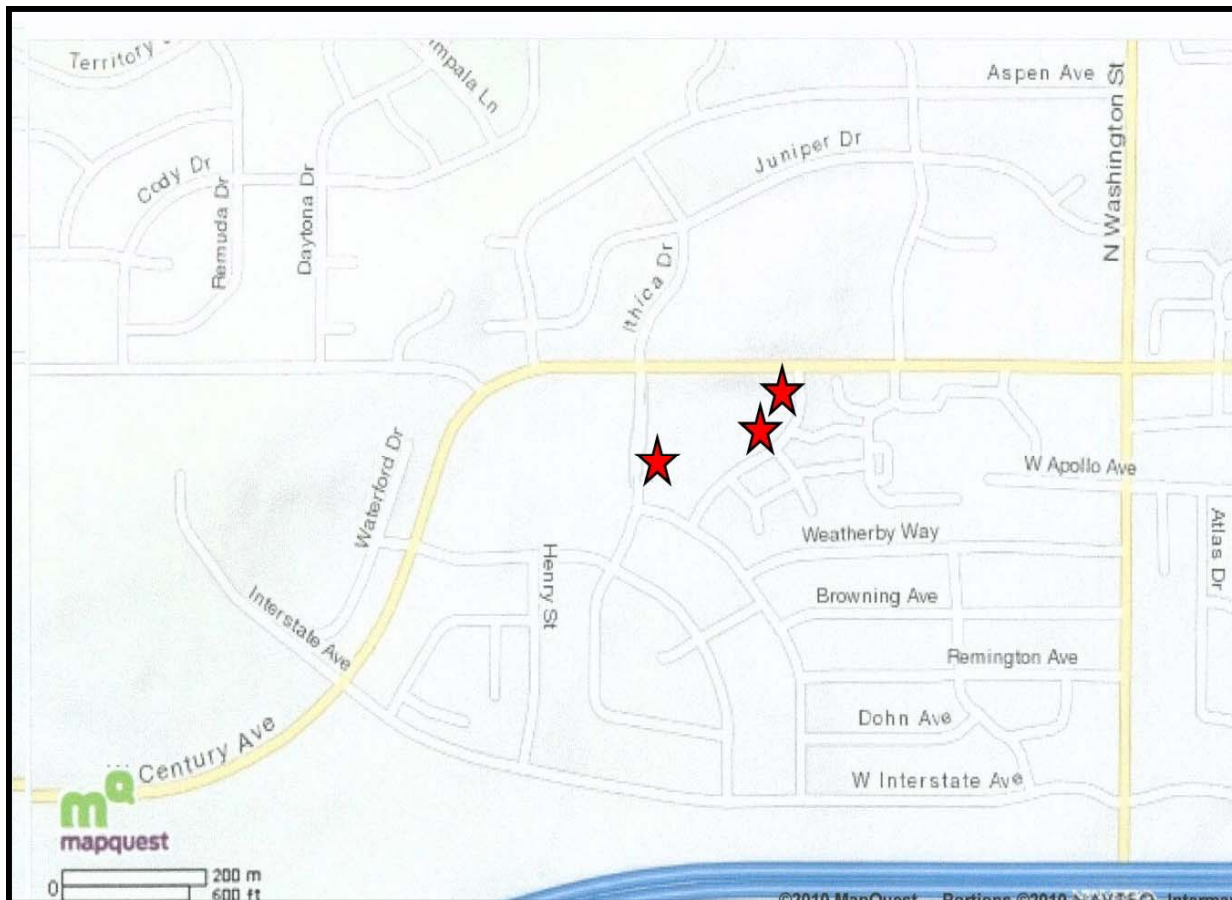


REAL ESTATE SERVICES
Bismarck, North Dakota

Proposed Concept Drawing—2



REAL ESTATE SERVICES
Bismarck, North Dakota



REAL ESTATE SERVICES
Bismarck, North Dakota

Subject Property



REAL ESTATE SERVICES
Bismarck, North Dakota