



PRESENTED BY:

George Yineman, Commercial Realtor
701.223.2450 office

email: george@aspengrouprealestate.com
web: aspengrouprealestate.com

FOR LEASE

2100 Lovett Avenue



Heated Warehouse
Unit 2

Price: \$1,000.00 month gross rent
Space Available: 1,800 SF
Lot Size: 21,000 SF
Zoned: MA Light Industrial
Terms: 3 Year Minimum
Features: Mezzanine with tool cage
14' Sidewall height
12' Roll-up door



REAL ESTATE SERVICES
701-223-2450 office
701-223-2322 fax
3712 Lockport Street, Suite C
Bismarck, North Dakota

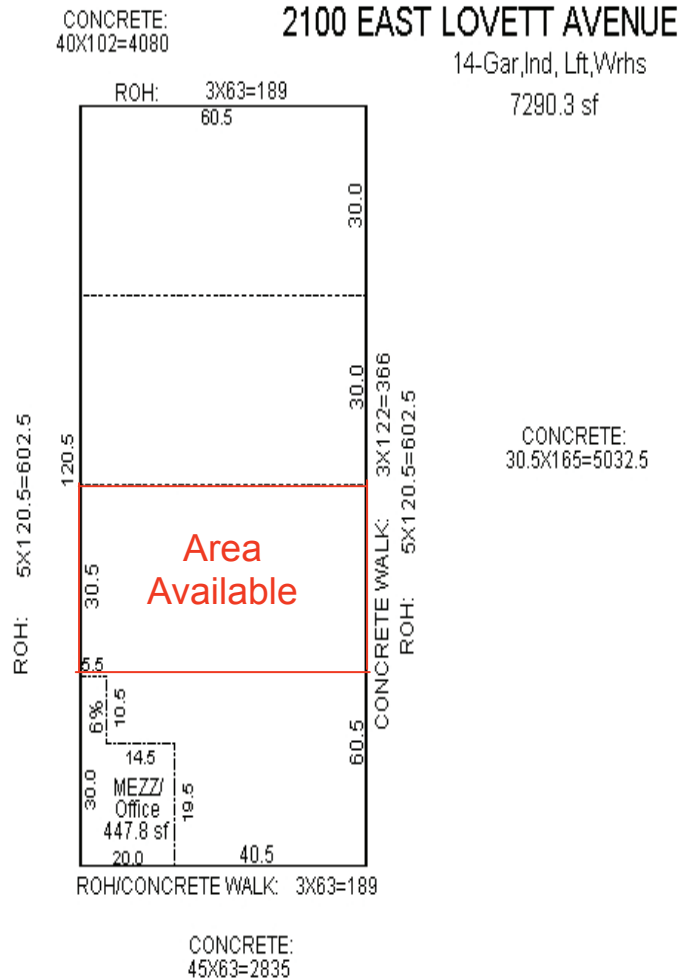
Data Information
2100 Lovett Avenue
Bismarck, ND

Space Available: 1,800 SF

Price: \$1,000.00 per month gross

Features: Mezzanine with tool cage
 14' Side walls
 12" Roll-up door

610-001-075





Located Near

Abra Auto Body

Gerald Wetzel Motors

Kawasaki Full Throttle Motors

Sparling Construction

Laser Specialist

Camp Bros. Heating & Air Conditioning

James Vault

Healthways



REAL ESTATE SERVICES
Bismarck, North Dakota

Location

